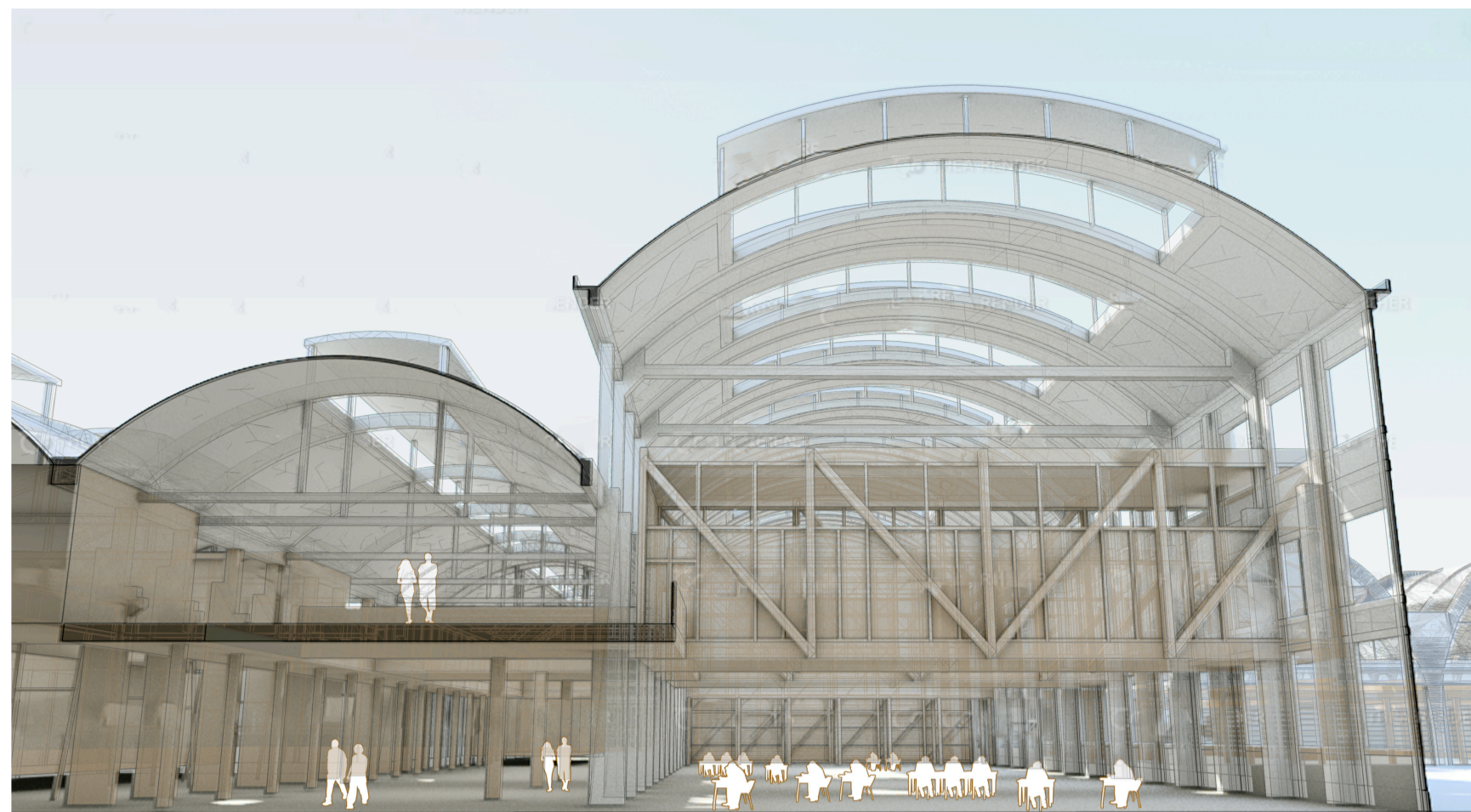
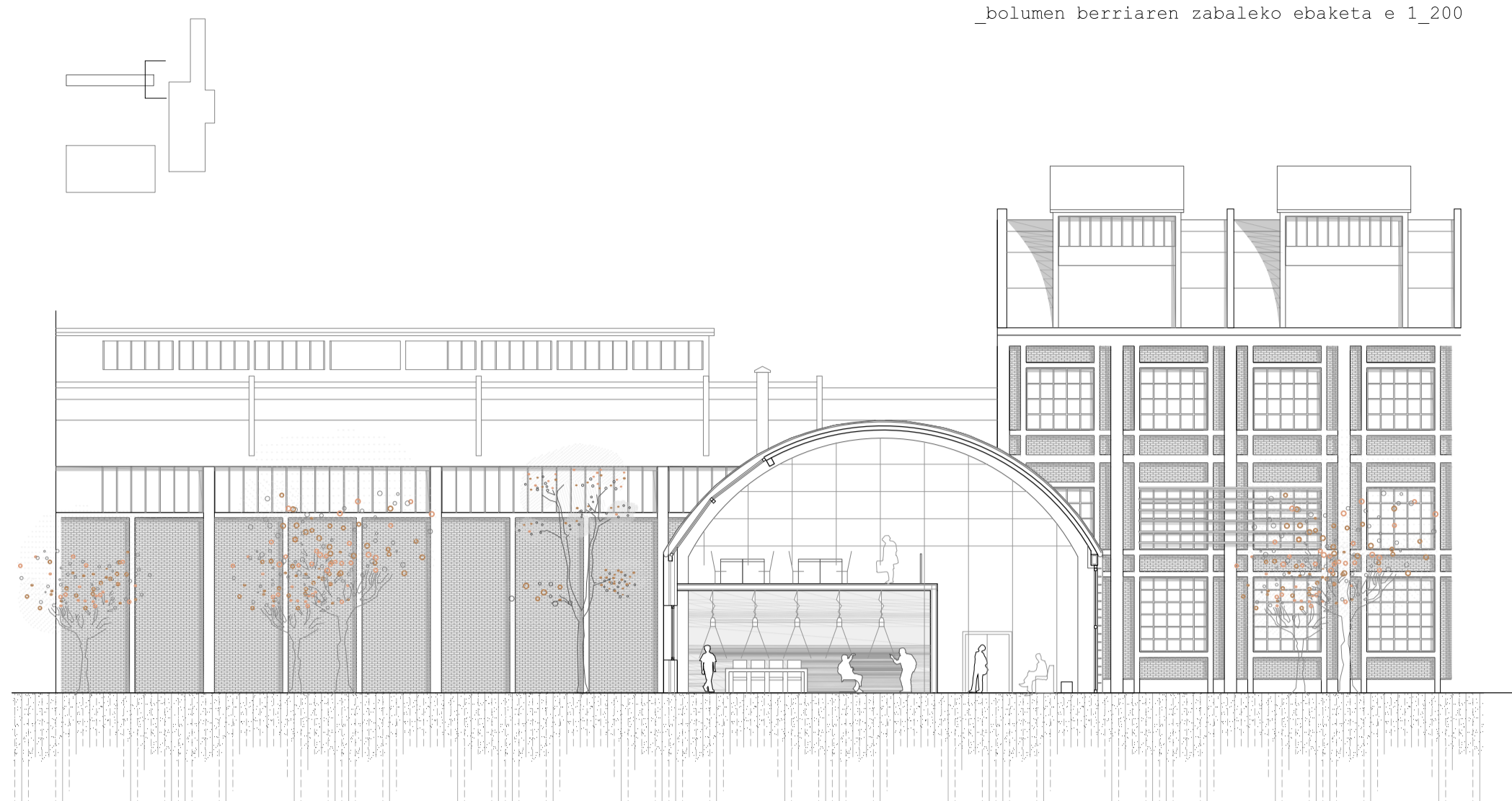


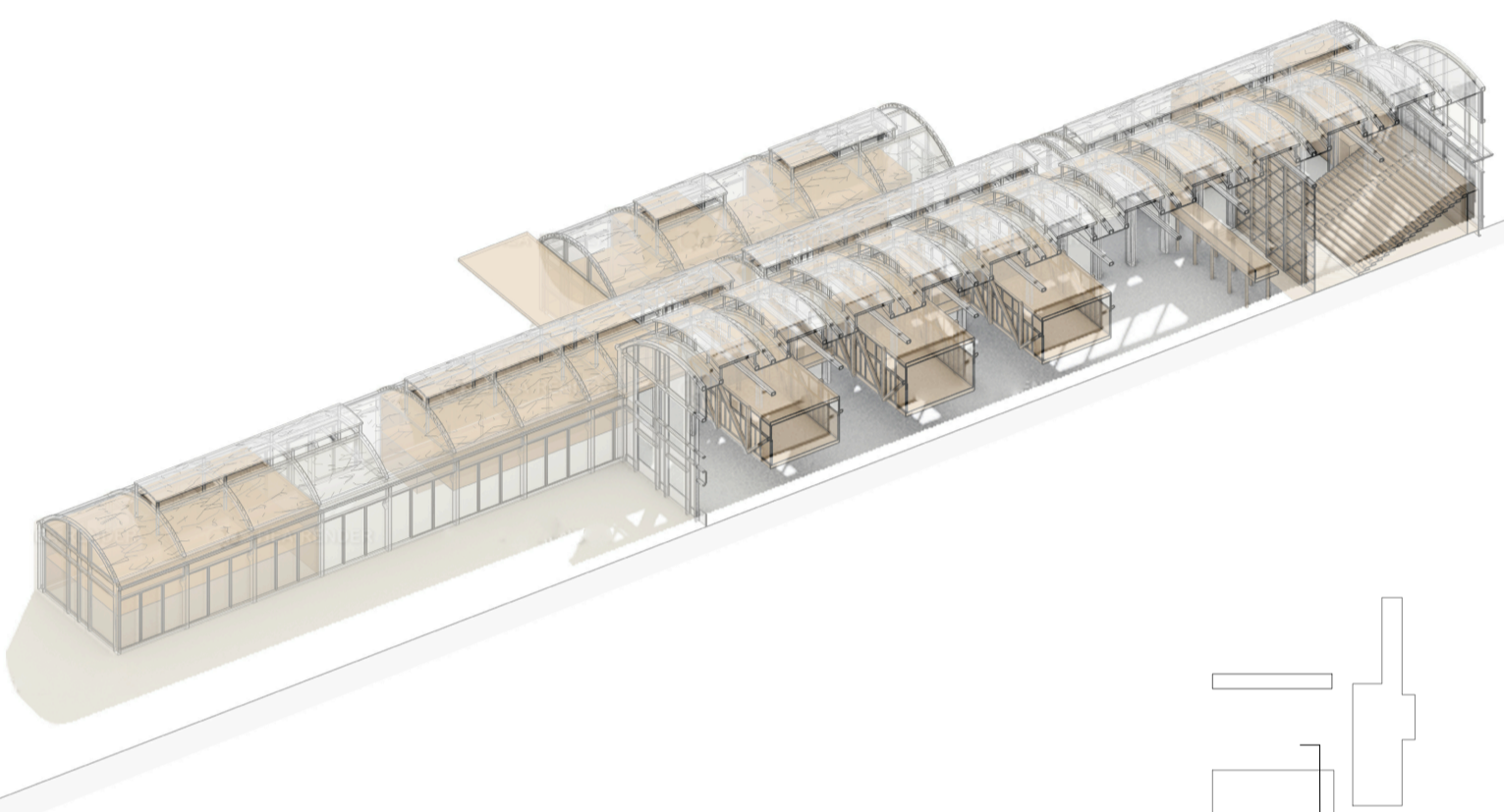
\_katedral txikiaren bista



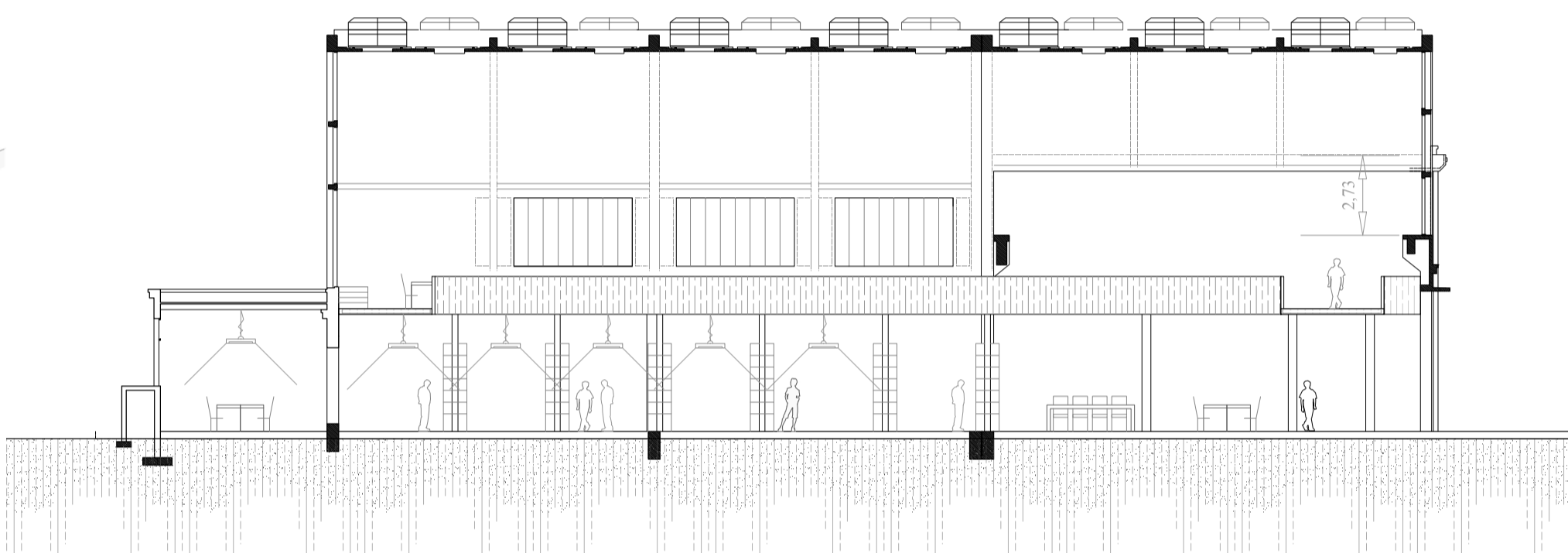
\_katedral handiaren bista



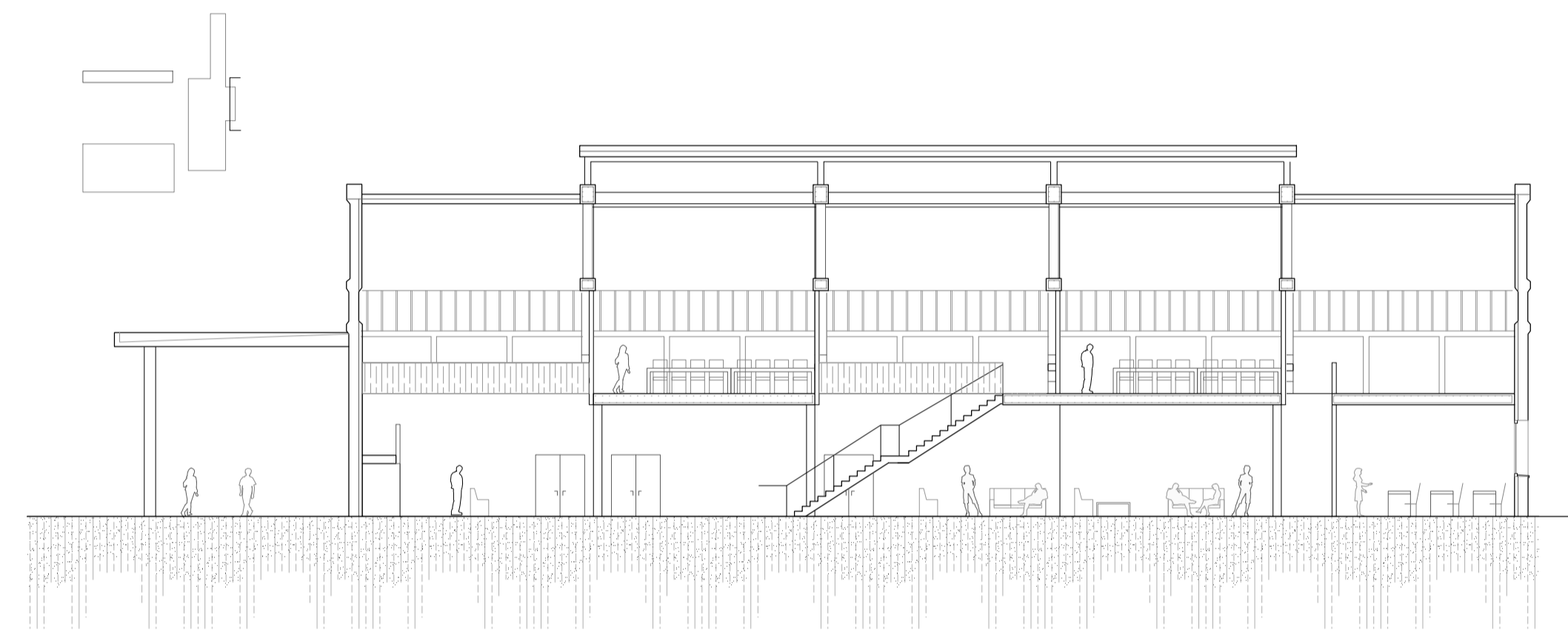
\_bolumen berriaren zabaleko ebaketa e 1\_200



\_ebaketa axonometrikoa

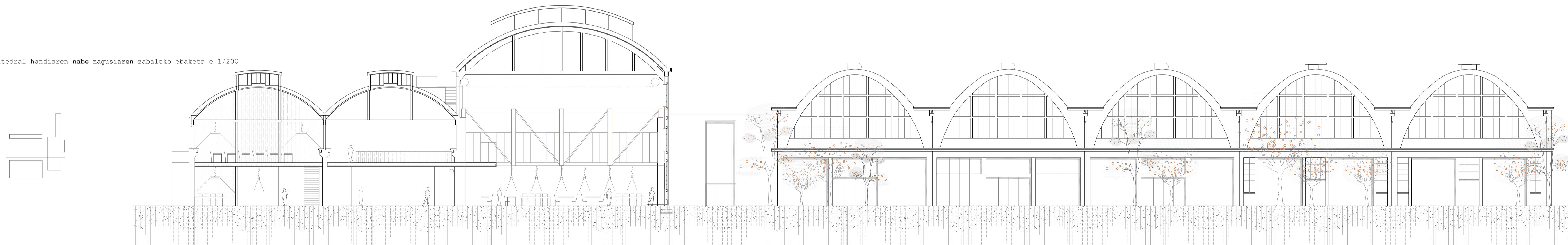


\_katedral txikiaren zabalerako ebaketa e 1\_200



\_katedral handiko ekialdeko nabearen ebaketa e 1\_200

\_katedral handiaren nabe nagusiaren zabaleko ebaketa e 1/200



\_katedral handiaren nabe nagusiaren luzetarako ebaketa e 1\_200

