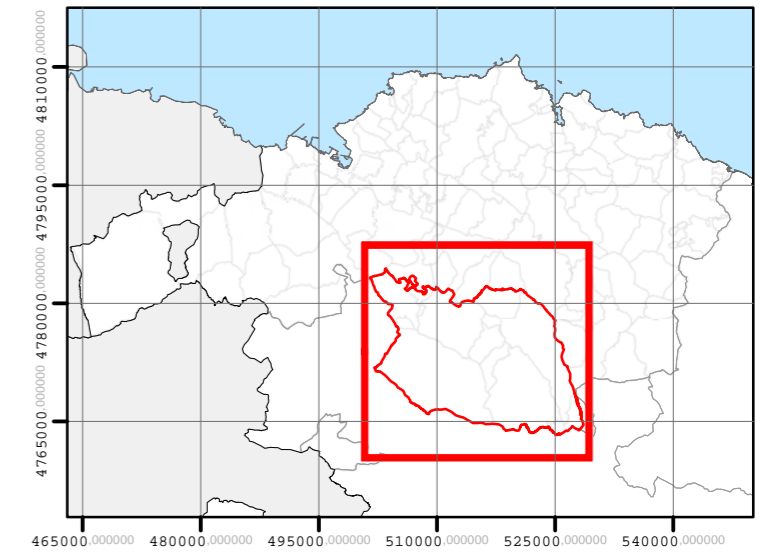
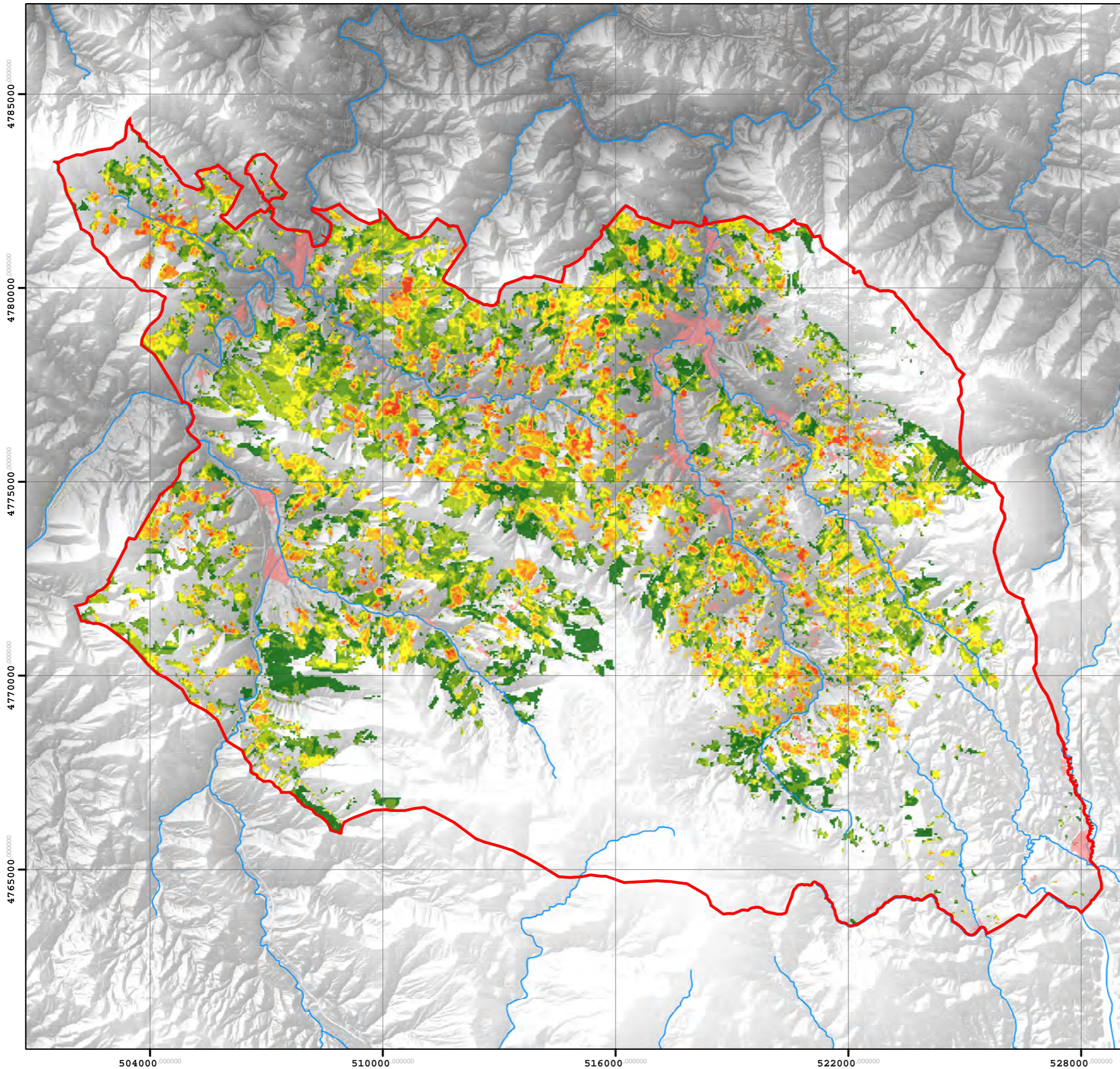


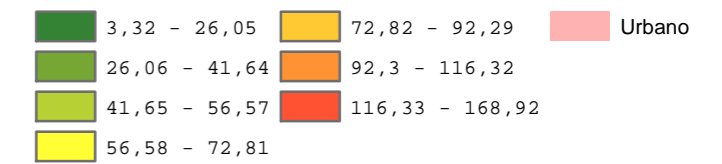
BIOMASA FORESTAL POTENCIAL DISPONIBLE DE RESTOS DE *P. radiata* EN MASAS DE LATIZAL/FUSTAL COMARCAS



ARRATIA-NERVION

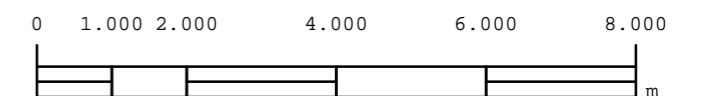
Superficie *Pinus radiata* 11602,45 ha
 Porcentaje de ocupación 55,67 %
 Biomasa potencial disponible 3.153.163,73 t
 Toneladas equivalentes de petróleo 1.407.896,02 t

Biomasa de *P. radiata* (t)

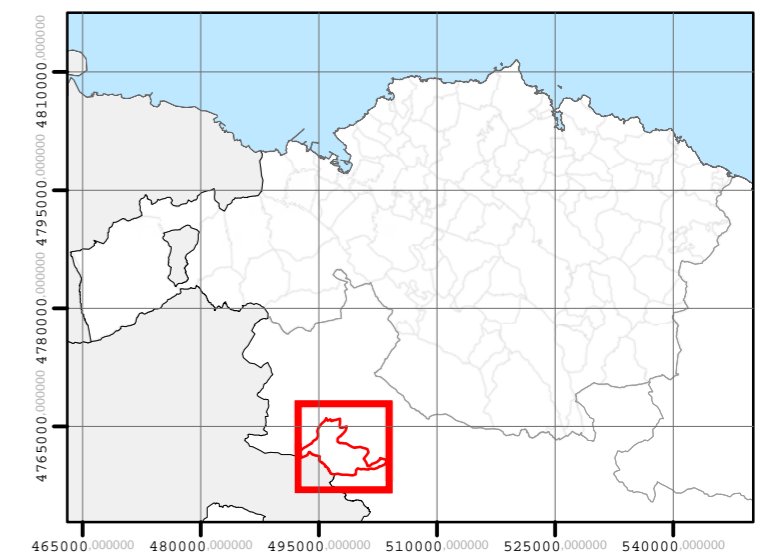
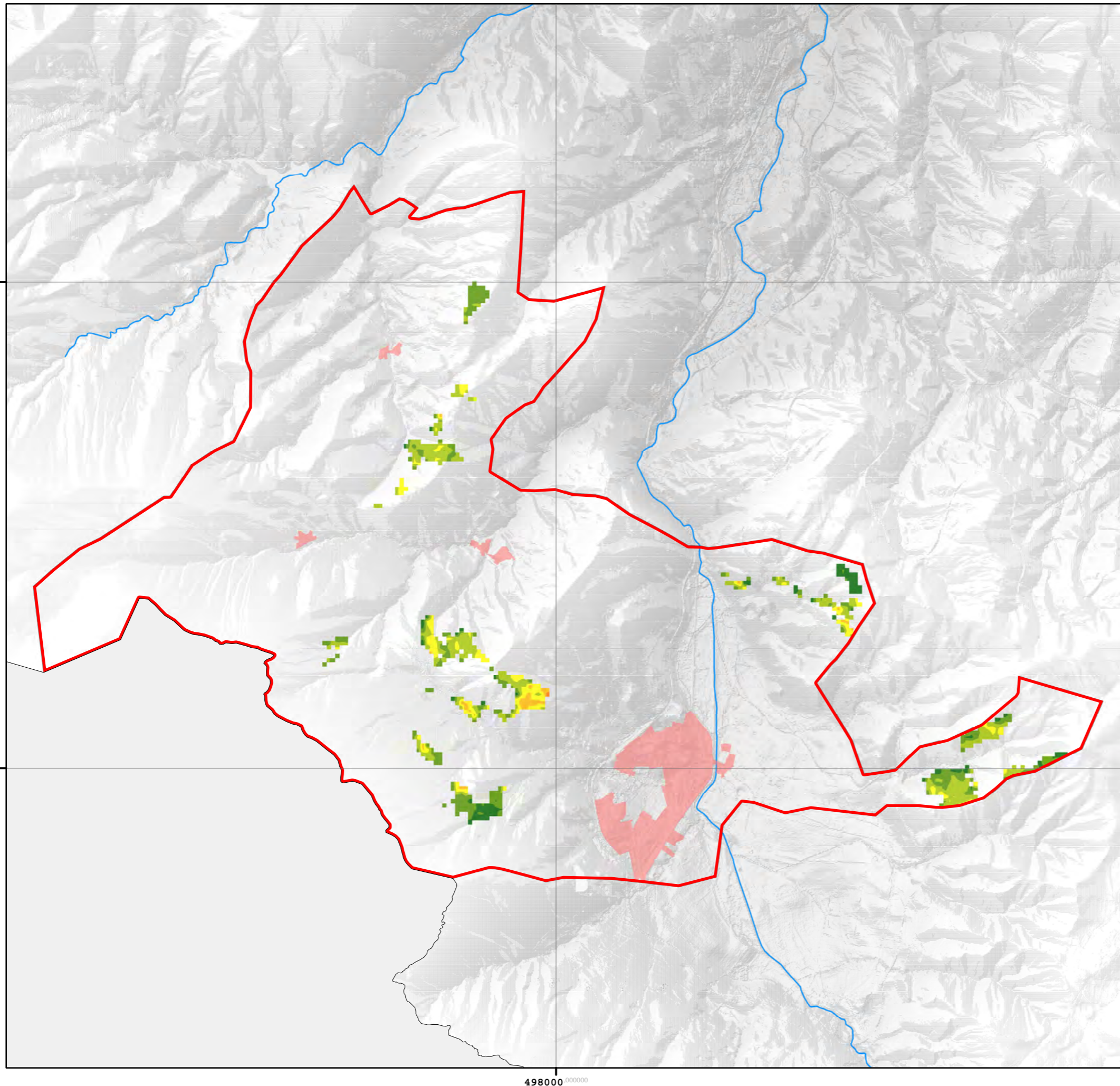


Tamaño del pixel = 0,196 ha

Coordinate System: ETRS 1989 UTM Zone 30N
 Projection: Transverse Mercator
 Datum: ETRS 1989
 False Easting: 500.000,0000
 False Northing: 0,0000
 Central Meridian: -3,0000
 Scale Factor: 0,9996
 Latitude Of Origin: 0,0000
 Units: Meter



BIOMASA FORESTAL POTENCIAL DISPONIBLE DE RESTOS DE *P. radiata* EN MASAS DE LATIZAL/FUSTAL COMARCAS



ARRATIA-NERVION (ORDUÑA)

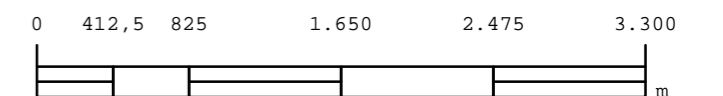
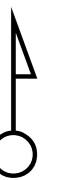
Superficie <i>Pinus radiata</i>	123,52 ha
Porcentaje de ocupación	3,42 %
Biomasa potencial disponible	28.575,63 t
Toneladas equivalentes de petróleo	12.759,09 t

Biomasa de *P. radiata* (t)

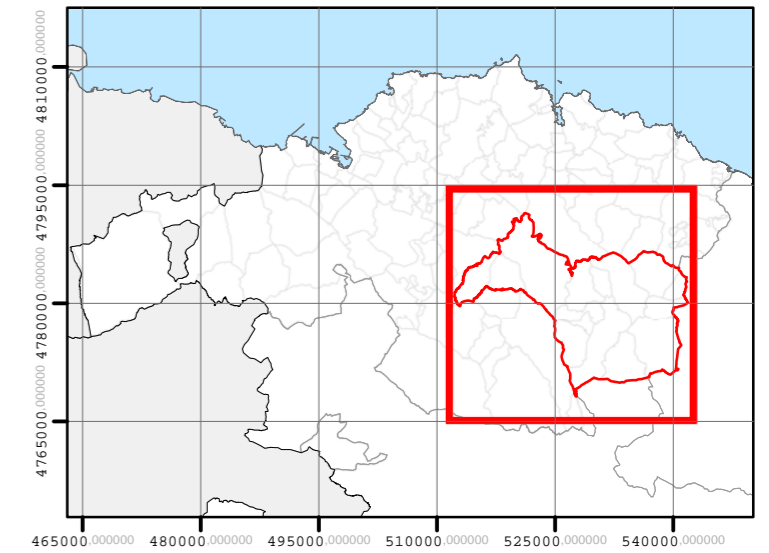
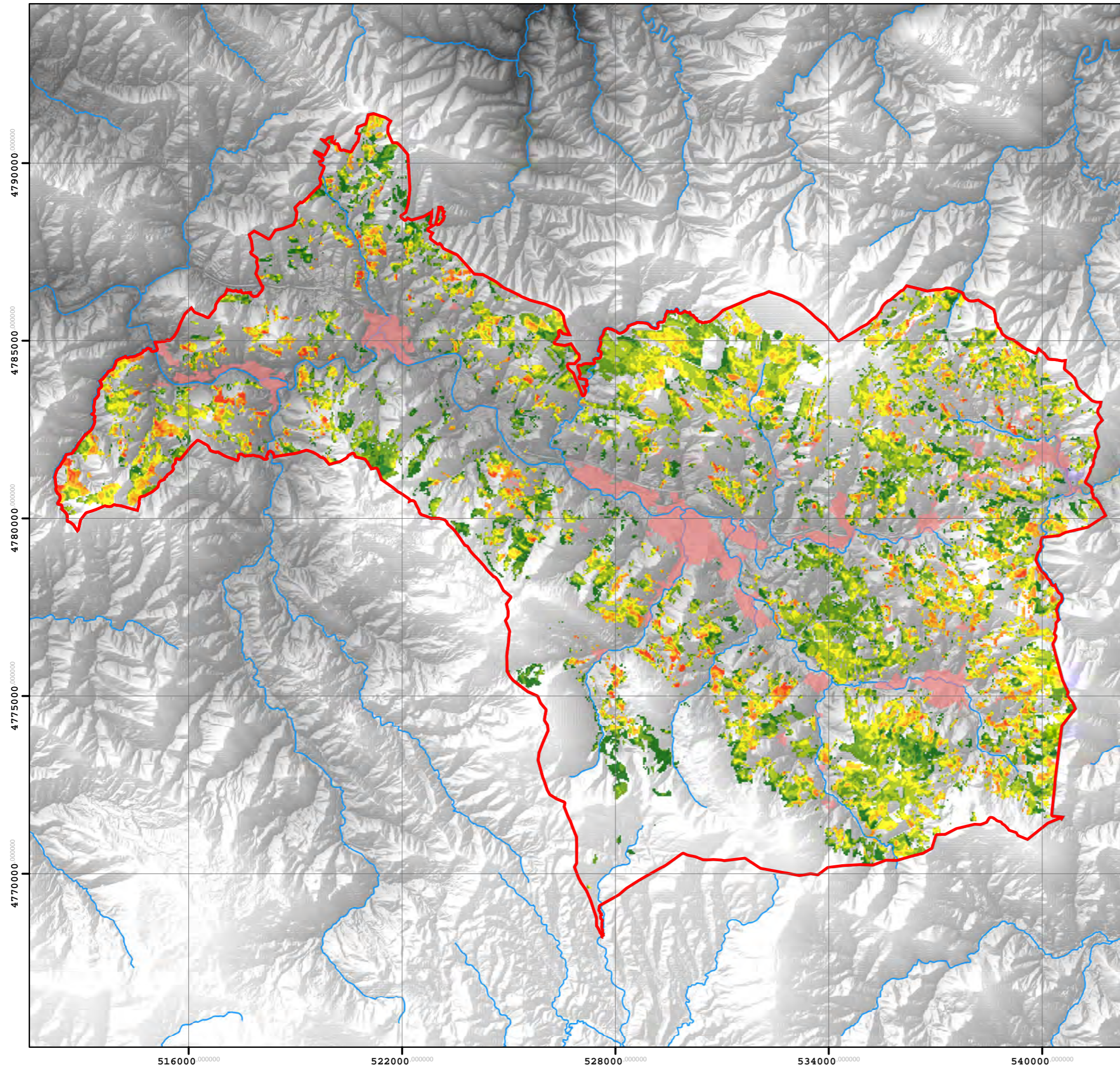
3,32 - 26,05	72,82 - 92,29	Urbano
26,06 - 41,64	92,3 - 116,32	
41,65 - 56,57	116,33 - 168,92	
56,58 - 72,81		

Tamaño del pixel = 0,196 ha

Coordinate System: ETRS 1989 UTM Zone 30N
 Projection: Transverse Mercator
 Datum: ETRS 1989
 False Easting: 500.000,0000
 False Northing: 0,0000
 Central Meridian: -3,0000
 Scale Factor: 0,9996
 Latitude Of Origin: 0,0000
 Units: Meter



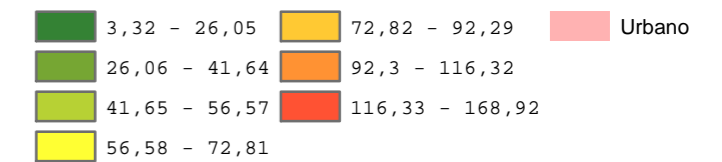
BIOMASA FORESTAL POTENCIAL DISPONIBLE DE RESTOS DE *P. radiata* EN MASAS DE LATIZAL/FUSTAL COMARCAS



DURANGUESADO

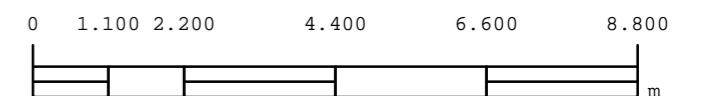
Superficie *Pinus radiata* 9590,94 ha
 Porcentaje de ocupación 24,29 %
 Biomasa potencial disponible 2.607.510,9 t
 Toneladas equivalentes de petróleo 1.164.260,57 t

Biomasa de *P. radiata* (t)

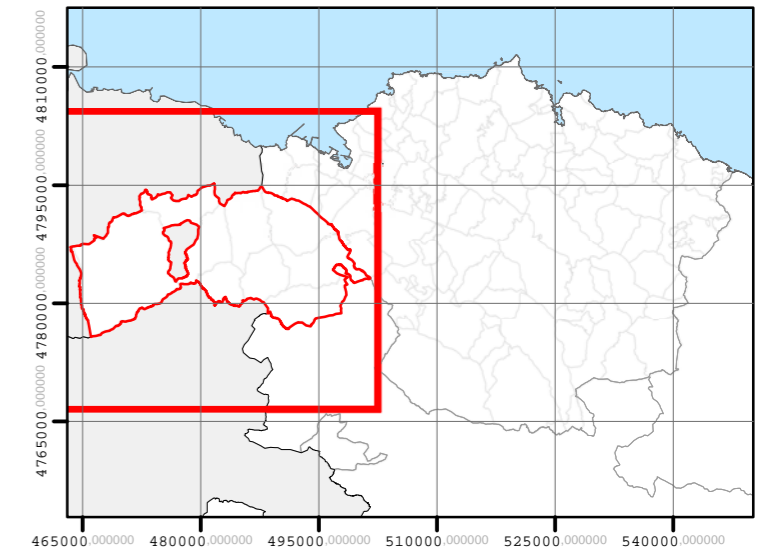
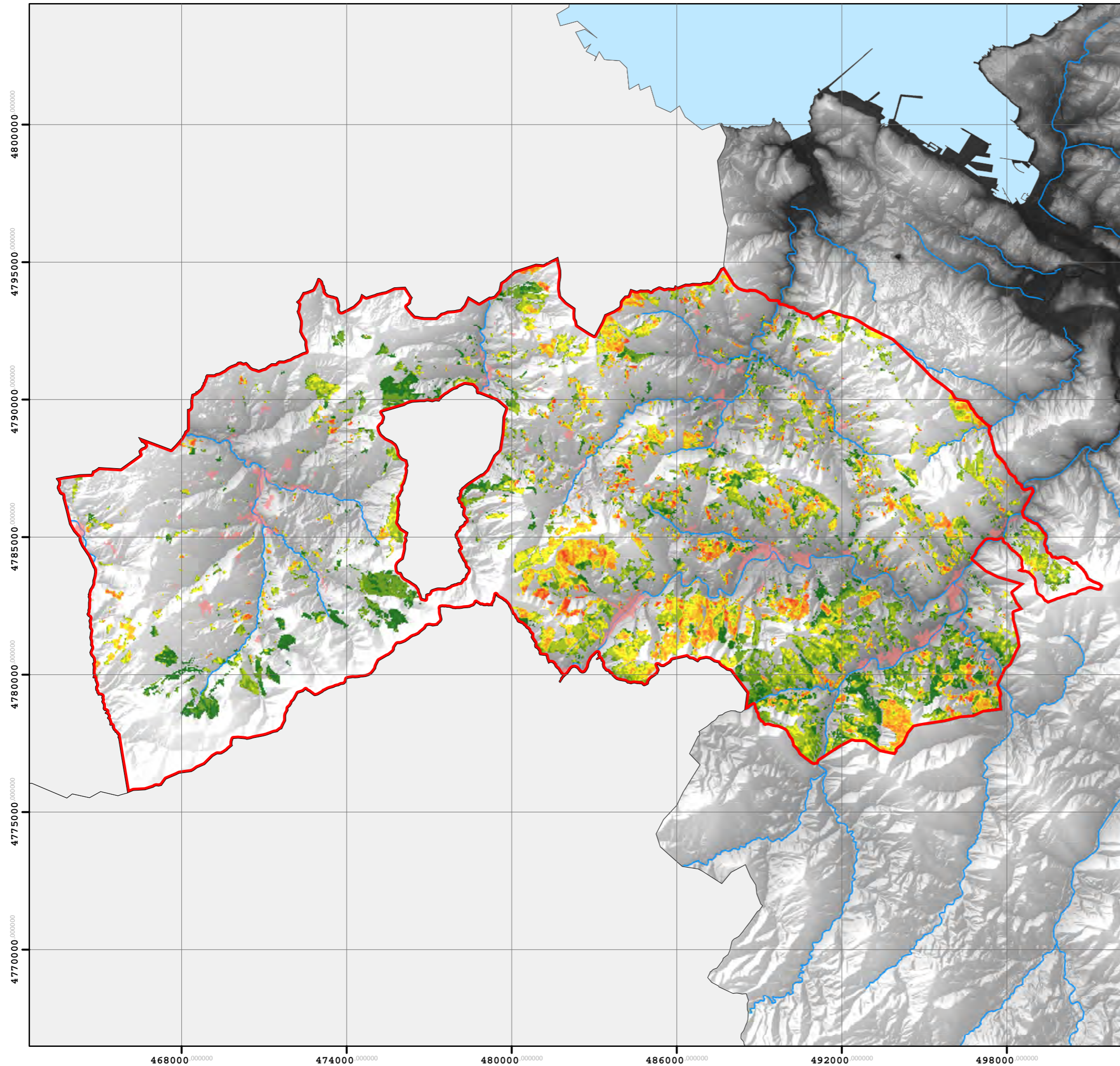


Tamaño del pixel = 0,196 ha

Coordinate System: ETRS 1989 UTM Zone 30N
 Projection: Transverse Mercator
 Datum: ETRS 1989
 False Easting: 500.000,0000
 False Northing: 0,0000
 Central Meridian: -3,0000
 Scale Factor: 0,9996
 Latitude Of Origin: 0,0000
 Units: Meter



BIOMASA FORESTAL POTENCIAL DISPONIBLE DE RESTOS DE *P. radiata* EN MASAS DE LATIZAL/FUSTAL COMARCAS



ENCARTACIONES

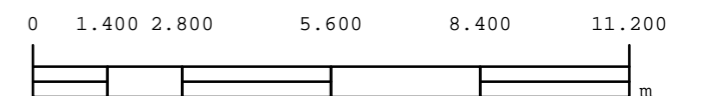
Superficie <i>Pinus radiata</i>	9233,56 ha
Porcentaje de ocupación	29,19 %
Biomasa potencial disponible	2.546.791,35 t
Toneladas equivalentes de petróleo	1.137.149,13 t

Biomasa de *P. radiata* (t)

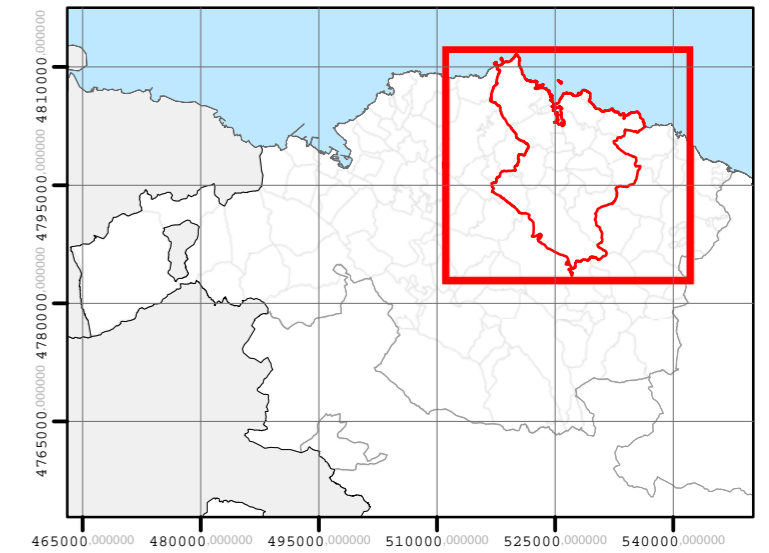
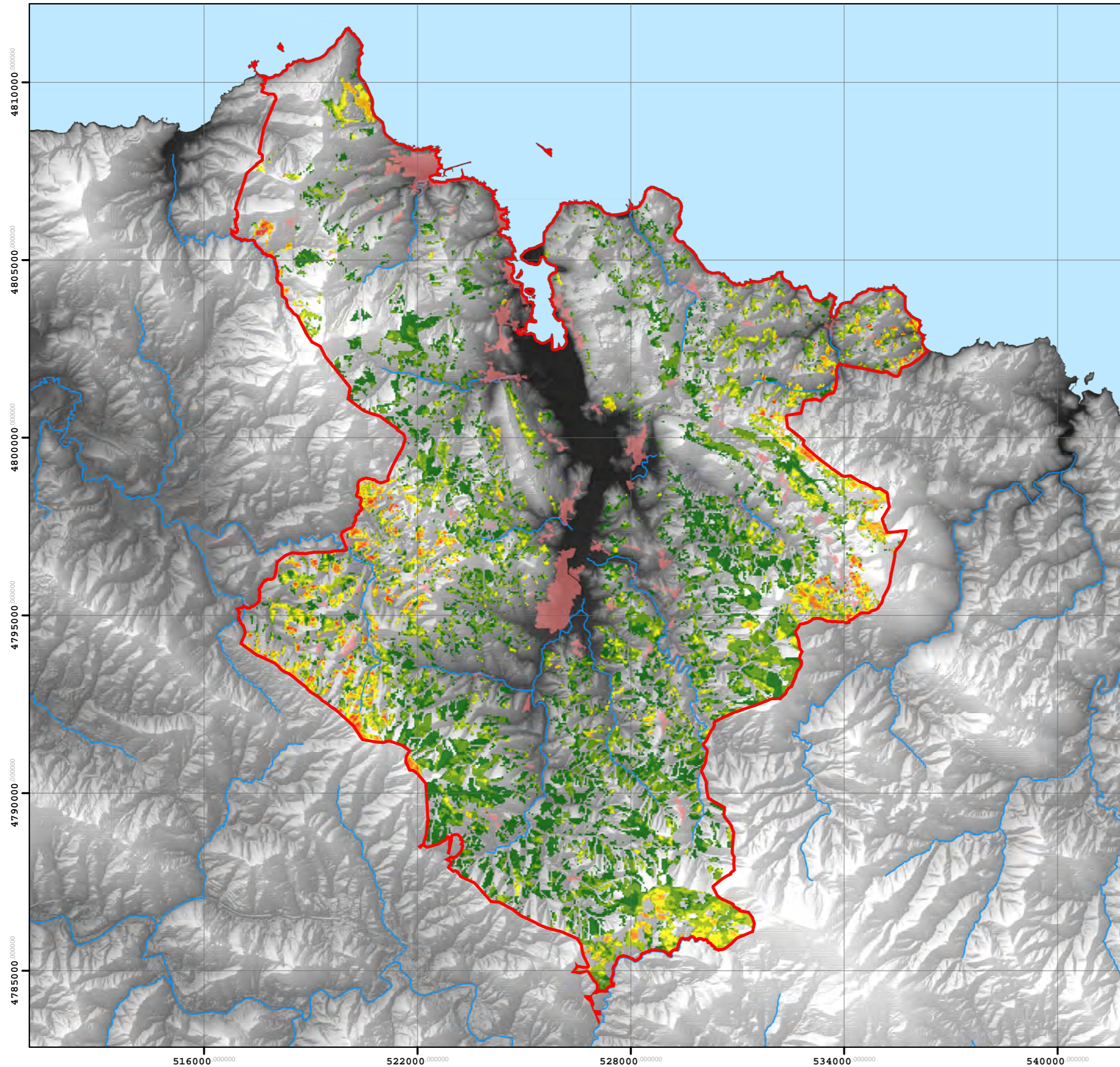
	3,32 - 26,05		72,82 - 92,29		Urbano
	26,06 - 41,64		92,3 - 116,32		
	41,65 - 56,57		116,33 - 168,92		
	56,58 - 72,81				

Tamaño del pixel = 0,196 ha

Coordinate System: ETRS 1989 UTM Zone 30N
 Projection: Transverse Mercator
 Datum: ETRS 1989
 False Easting: 500.000,0000
 False Northing: 0,0000
 Central Meridian: -3,0000
 Scale Factor: 0,9996
 Latitude Of Origin: 0,0000
 Units: Meter



BIOMASA FORESTAL POTENCIAL DISPONIBLE DE RESTOS DE *P. radiata* EN MASAS DE LATIZAL/FUSTAL COMARCAS



GERNIKA-BERMEO

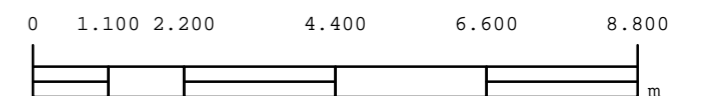
Superficie <i>Pinus radiata</i>	7719,22 ha
Porcentaje de ocupación	17,97 %
Biomasa potencial disponible	1.497.845,38 t
Toneladas equivalentes de petróleo	668.791,96 t

Biomasa de *P. radiata* (t)

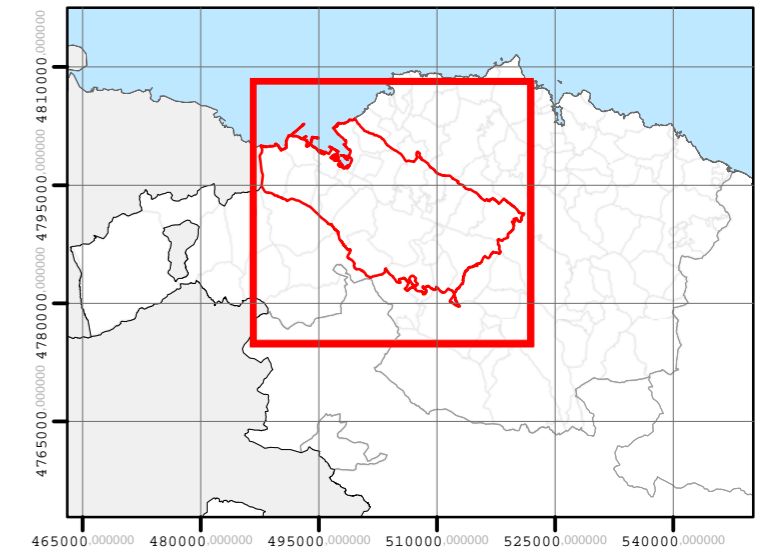
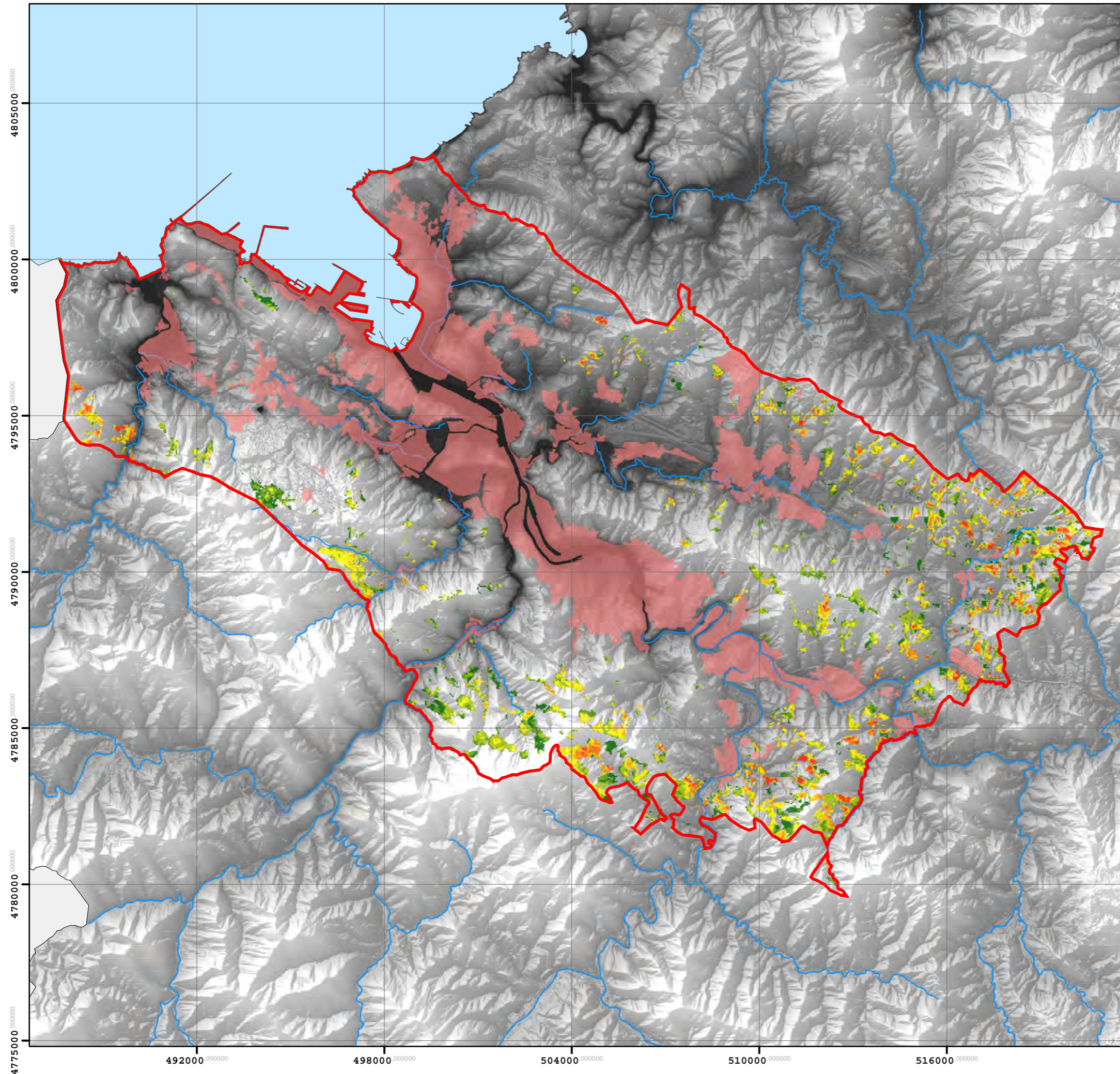
3,32 - 26,05	72,82 - 92,29	Urbano
26,06 - 41,64	92,3 - 116,32	
41,65 - 56,57	116,33 - 168,92	
56,58 - 72,81		

Tamaño del pixel = 0,196 ha

Coordinate System: ETRS 1989 UTM Zone 30N
 Projection: Transverse Mercator
 Datum: ETRS 1989
 False Easting: 500.000,0000
 False Northing: 0,0000
 Central Meridian: -3,0000
 Scale Factor: 0,9996
 Latitude Of Origin: 0,0000
 Units: Meter



BIOMASA FORESTAL POTENCIAL DISPONIBLE DE RESTOS DE *P. radiata* EN MASAS DE LATIZAL/FUSTAL COMARCAS



GRAN BILBAO

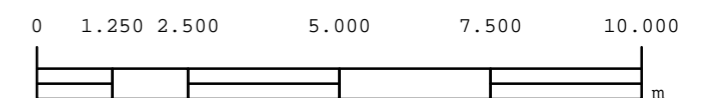
Superficie <i>Pinus radiata</i>	3014,35 ha
Porcentaje de ocupación	10,82 %
Biomasa potencial disponible	901.308,34 t
Toneladas equivalentes de petróleo	402.436,58 t

Biomasa de *P. radiata* (t)

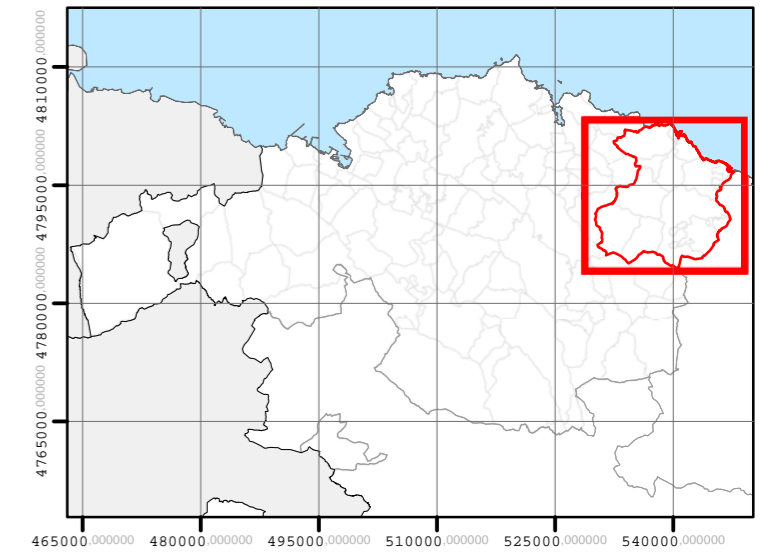
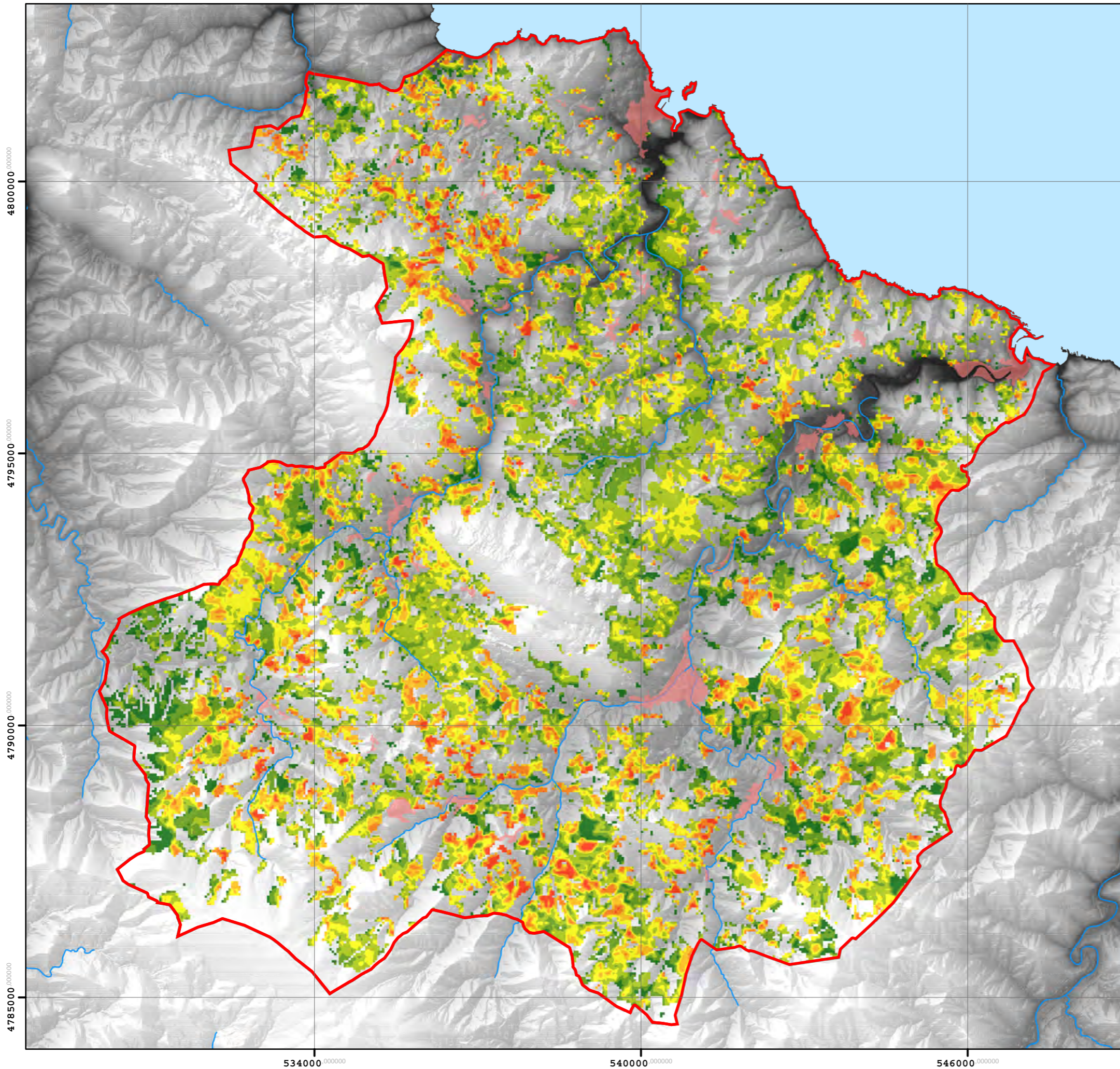
 3,32 - 26,05	 72,82 - 92,29	 Urbano
 26,06 - 41,64	 92,3 - 116,32	
 41,65 - 56,57	 116,33 - 168,92	
 56,58 - 72,81		

Tamaño del pixel = 0,196 ha

Coordinate System: ETRS 1989 UTM Zone 30N
 Projection: Transverse Mercator
 Datum: ETRS 1989
 False Easting: 500.000,0000
 False Northing: 0,0000
 Central Meridian: -3,0000
 Scale Factor: 0,9996
 Latitude Of Origin: 0,0000
 Units: Meter



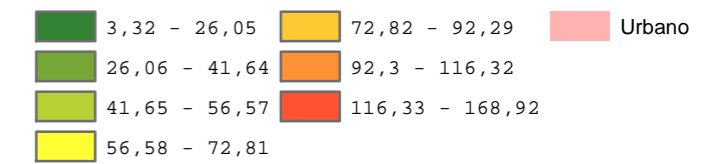
BIOMASA FORESTAL POTENCIAL DISPONIBLE DE RESTOS DE *P. radiata* EN MASAS DE LATIZAL/FUSTAL COMARCAS



MARKINA-ONDARROA

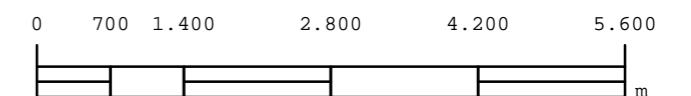
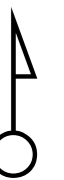
Superficie *Pinus radiata* 8878,88 ha
 Porcentaje de ocupación 23,74 %
 Biomasa potencial disponible 2.562.916,47 t
 Toneladas equivalentes de petróleo 1.144.349,04 t

Biomasa de *P. radiata* (t)

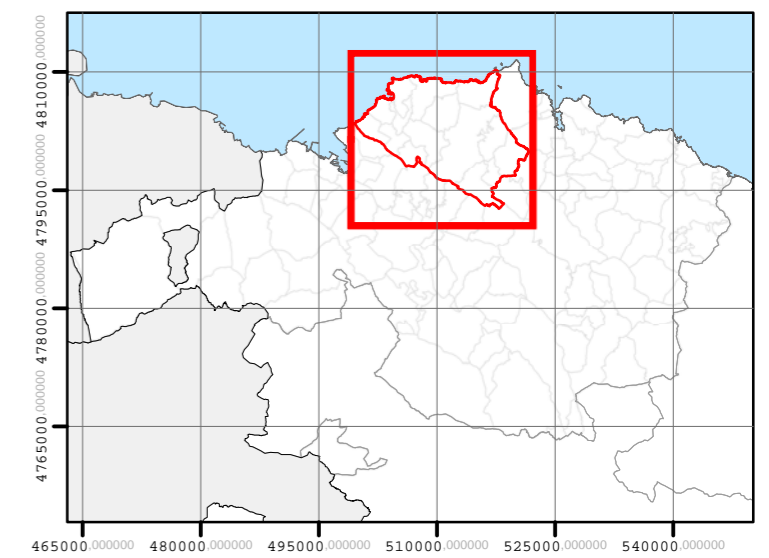
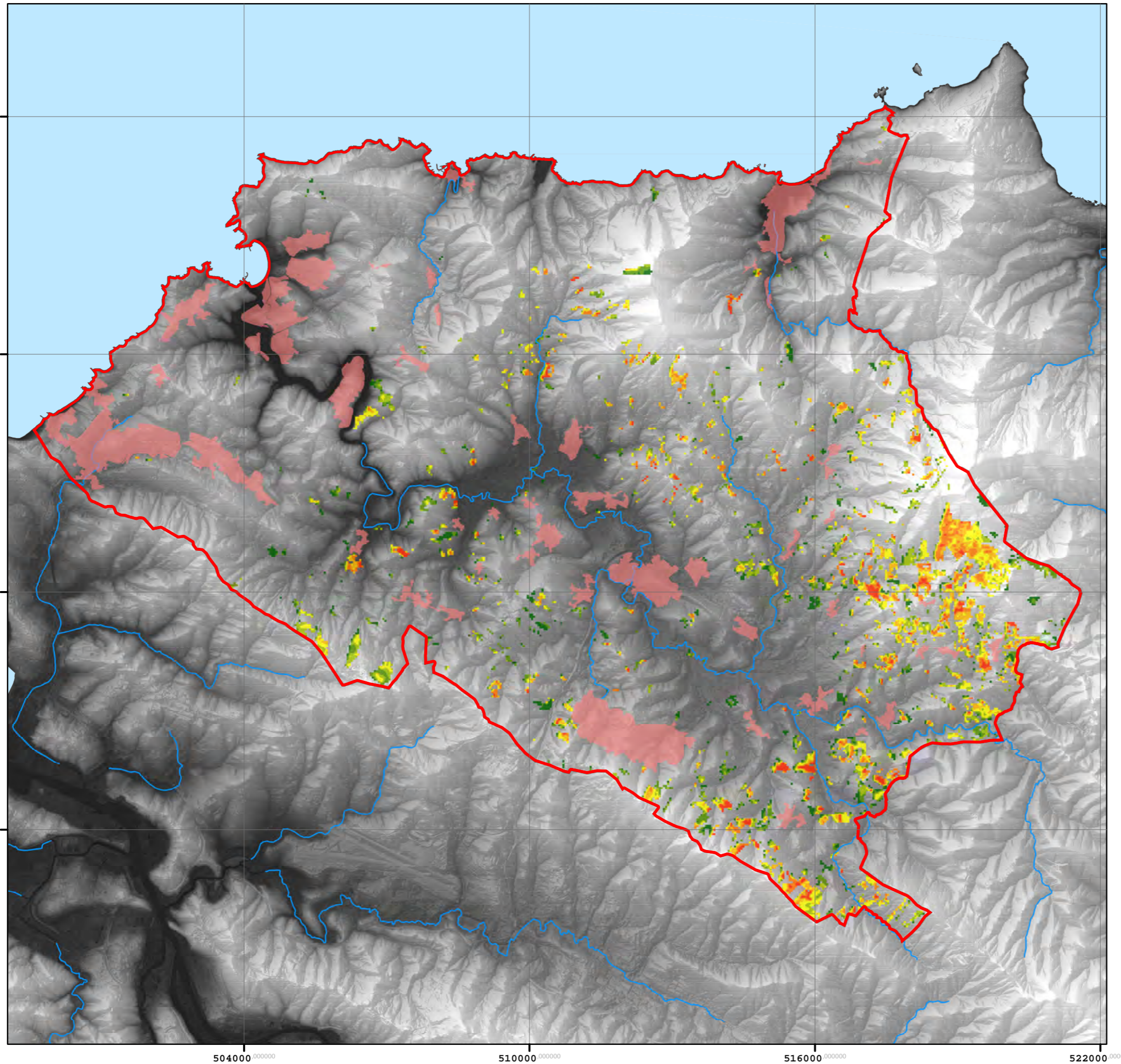


Tamaño del pixel = 0,196 ha

Coordinate System: ETRS 1989 UTM Zone 30N
 Projection: Transverse Mercator
 Datum: ETRS 1989
 False Easting: 500.000,0000
 False Northing: 0,0000
 Central Meridian: -3,0000
 Scale Factor: 0,9996
 Latitude Of Origin: 0,0000
 Units: Meter



BIOMASA FORESTAL POTENCIAL DISPONIBLE DE RESTOS DE *P. radiata* EN MASAS DE LATIZAL/FUSTAL COMARCAS



PLENTZIA-MUNGIA

Superficie <i>Pinus radiata</i>	1383,47 ha
Porcentaje de ocupación	6,72 %
Biomasa potencial disponible	445.411,11 t
Toneladas equivalentes de petróleo	198.877,25 t

Biomasa de *P. radiata* (t)

	3,32 - 26,05		72,82 - 92,29		Urbano
	26,06 - 41,64		92,3 - 116,32		
	41,65 - 56,57		116,33 - 168,92		
	56,58 - 72,81				

Tamaño del pixel = 0,196 ha

Coordinate System: ETRS 1989 UTM Zone 30N
 Projection: Transverse Mercator
 Datum: ETRS 1989
 False Easting: 500.000,0000
 False Northing: 0,0000
 Central Meridian: -3,0000
 Scale Factor: 0,9996
 Latitude Of Origin: 0,0000
 Units: Meter

