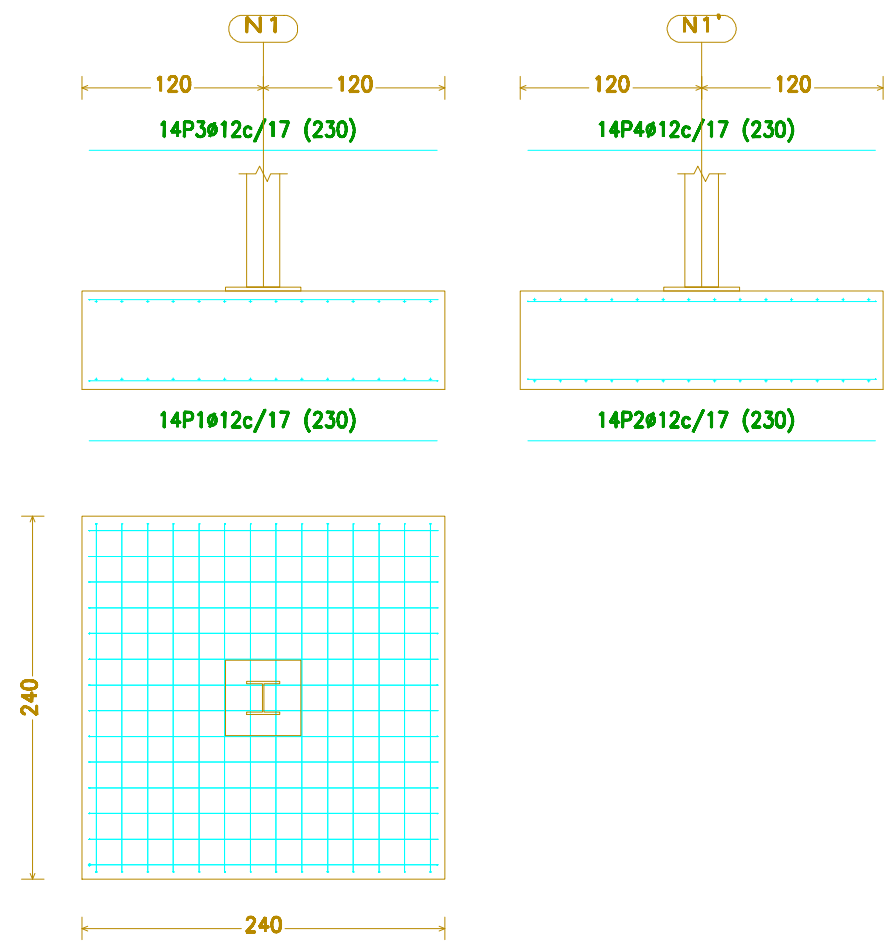
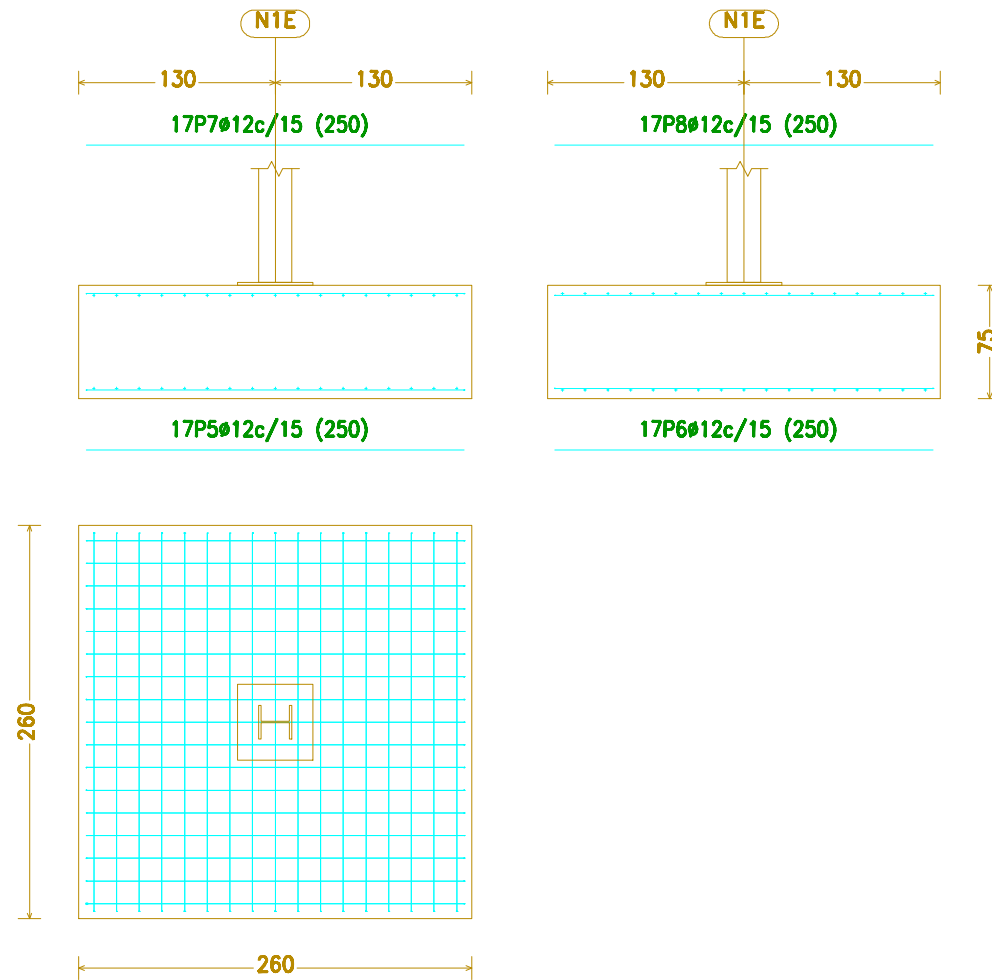


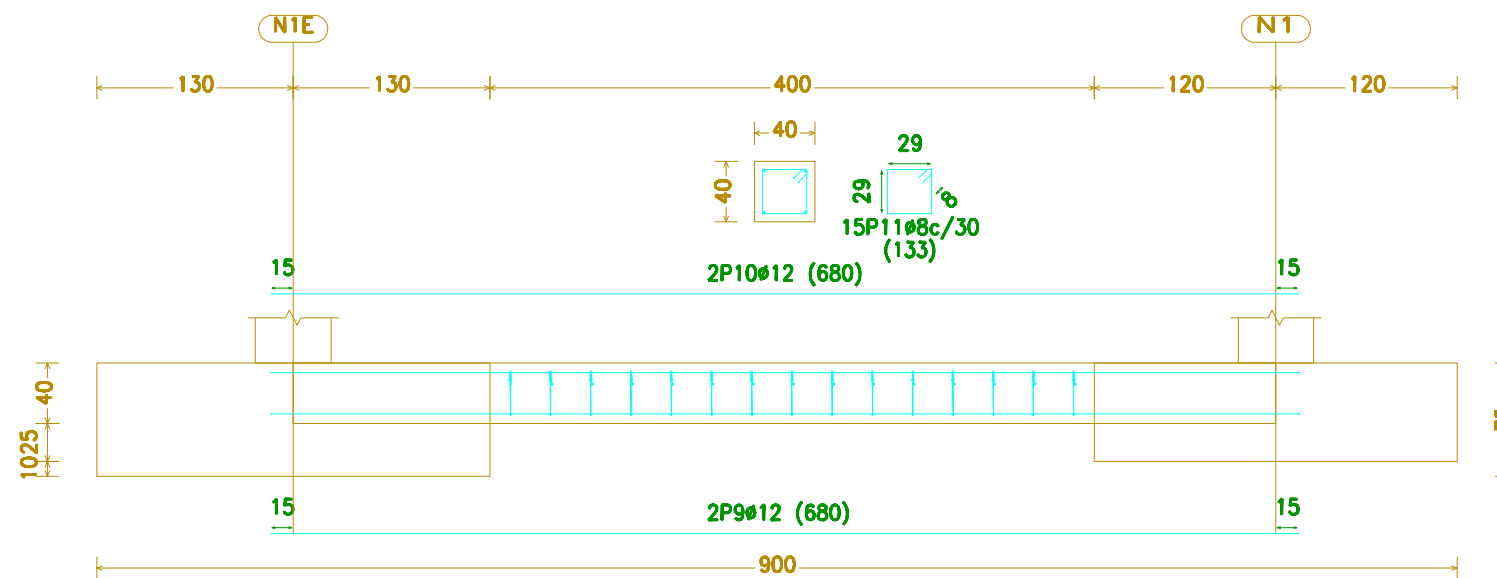
N1 y N1'



N1E



C.1 [N1E-N1] y C.1 [N1E-N1']



Neurriak mm-tan

Elemento	Pos.	Diám.	No.	Long. (cm)	Total (cm)	B 400 S, Ys=1.1 (kg)
N1=N1'	1	Ø12	14	230	3220	28.6
	2	Ø12	14	230	3220	28.6
	3	Ø12	14	230	3220	28.6
	4	Ø12	14	230	3220	28.6
					Total+10% (x2):	125.8
						251.6
N1E	5	Ø12	17	250	4250	37.7
	6	Ø12	17	250	4250	37.7
	7	Ø12	17	250	4250	37.7
	8	Ø12	17	250	4250	37.7
					Total+10%:	165.9
C.1 [N1E-N1]=C.1 [N1E-N1']	9	Ø12	2	680	1360	12.1
	10	Ø12	2	680	1360	12.1
	11	Ø8	15	133	1995	7.9
					Total+10% (x2):	35.3
						70.6
					Ø8:	17.4
					Ø12:	470.7
					Total:	488.1

	DATA	IZENA	(SINADURA)
Inudikatuta	2019/02/02	Ander Fernandez Martinez	
Egiaztatuta	2019/02/02	Ander Fernandez Martinez	
ESKALA	ERAIKIN INDUSTRIAL BATEN ERAIKUNTZA PROIEKTUA BERMEON (BIZKAIA)		
1:50	ZIMENTAZIOA (ZAPATEN DETAILEAK)		



Universidad del País Vasco Euskal Herriko Unibertsitatea

PLANOA

06