

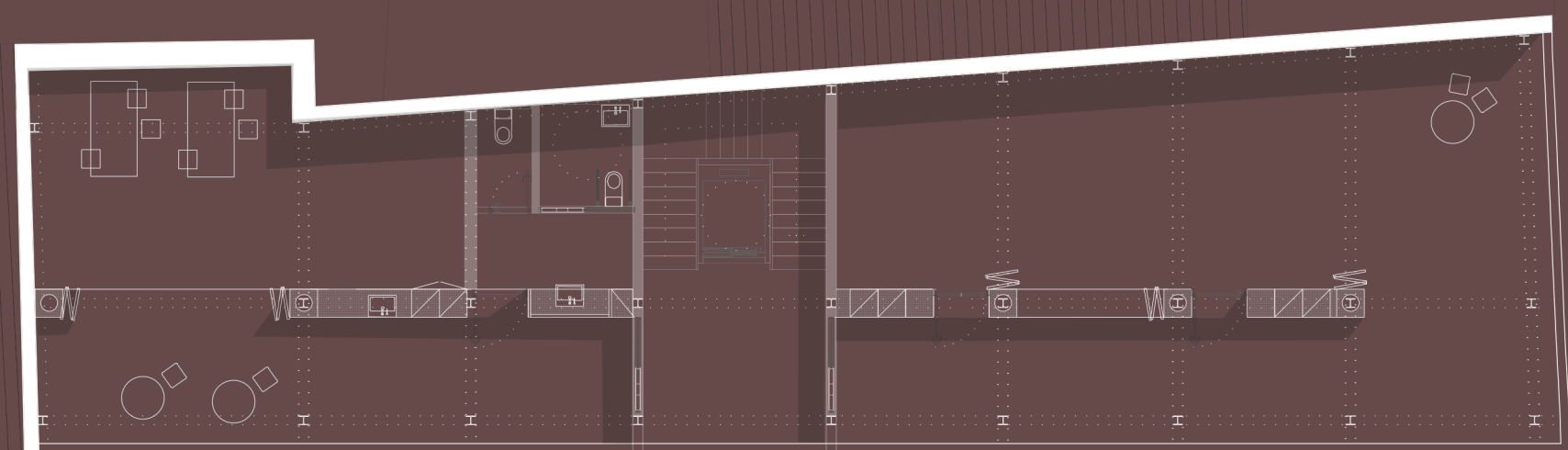




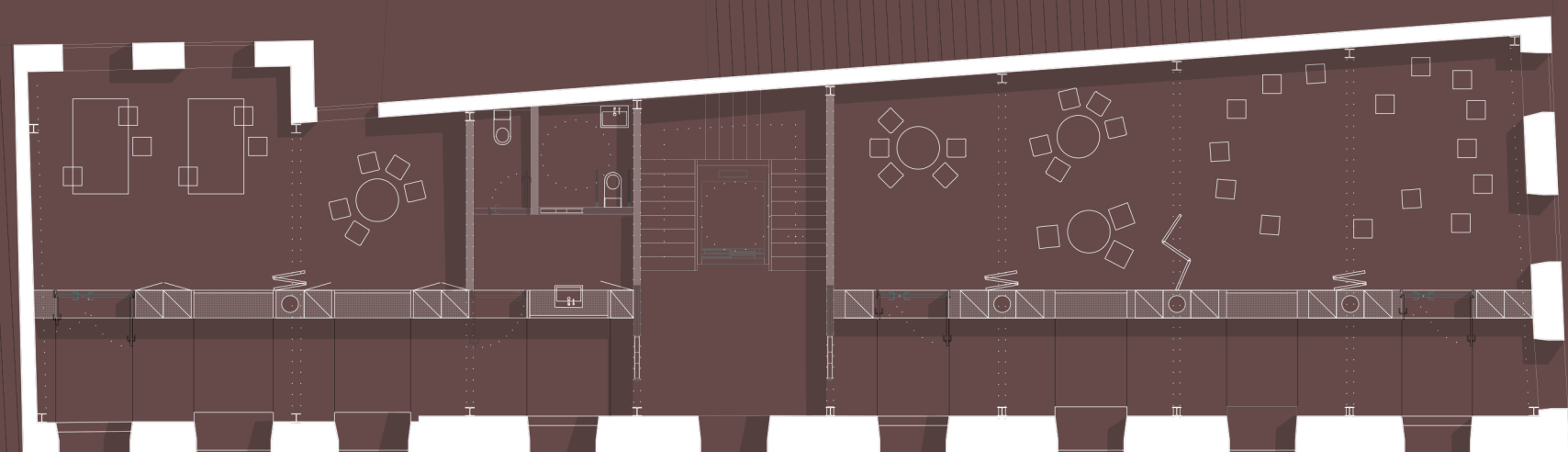
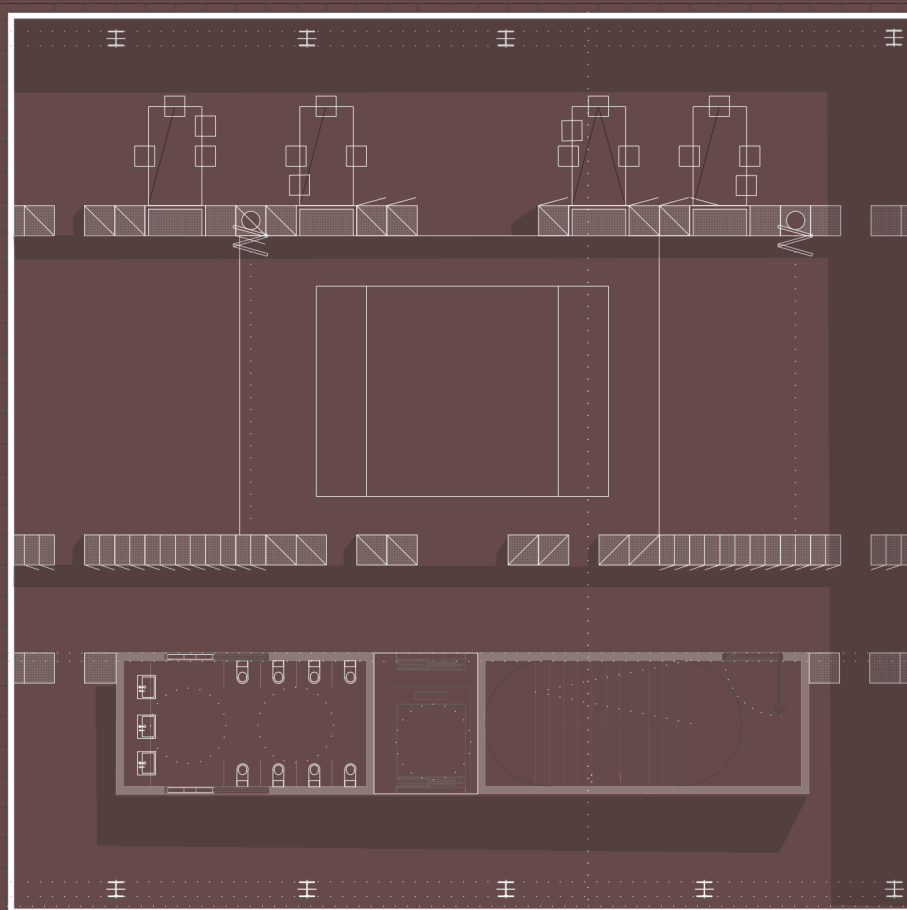
# ELKAR BIZI, JOSIZ.

AUZO-ETXEA DONOSTIAKO ALDE ZAHARREAN

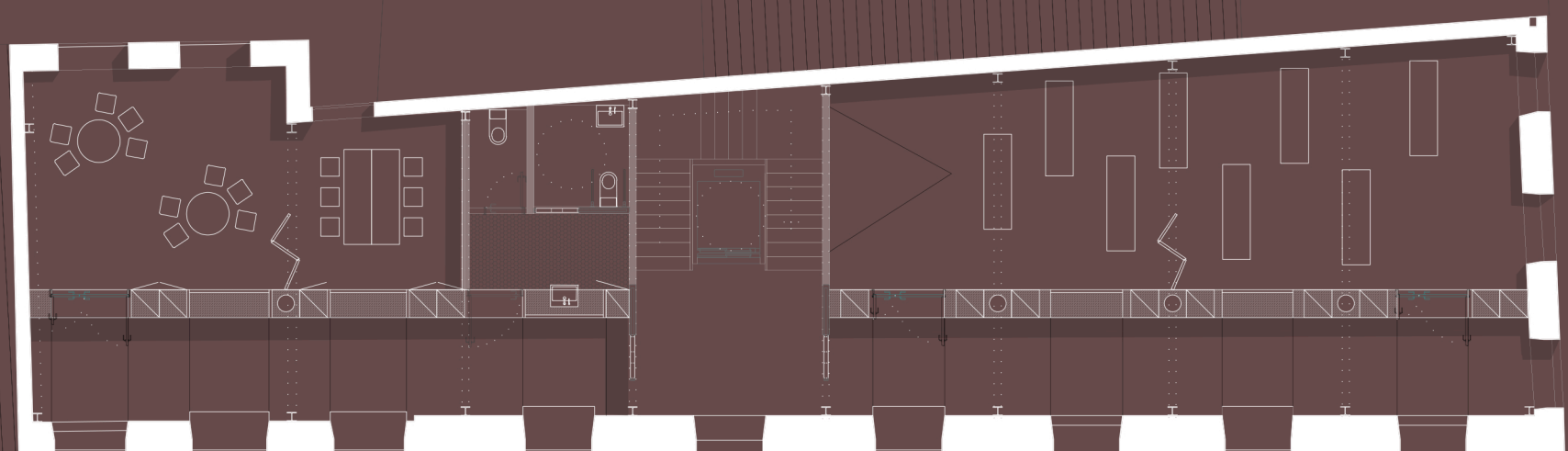
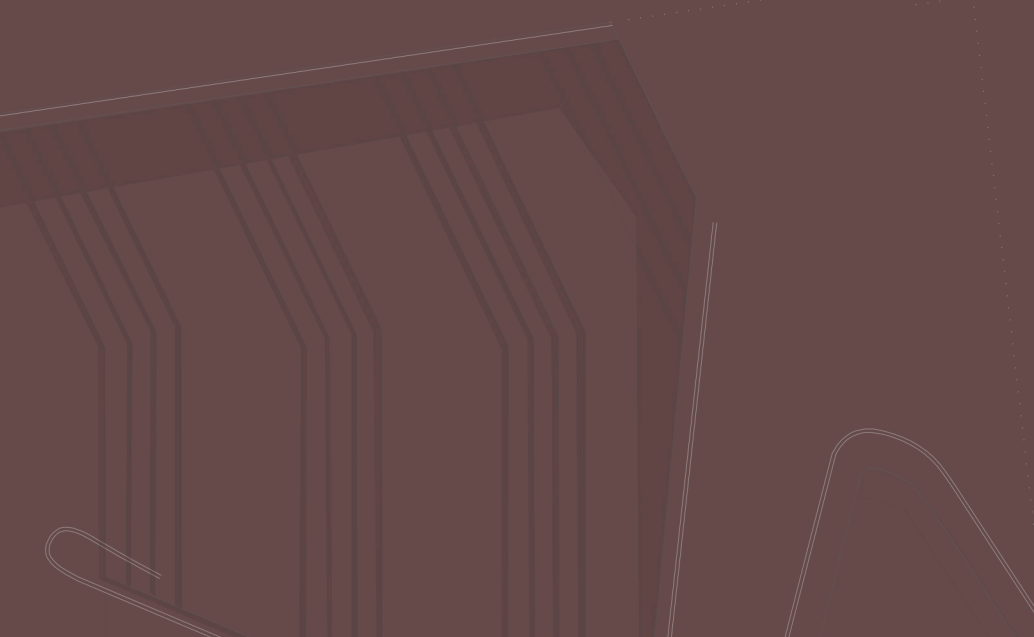
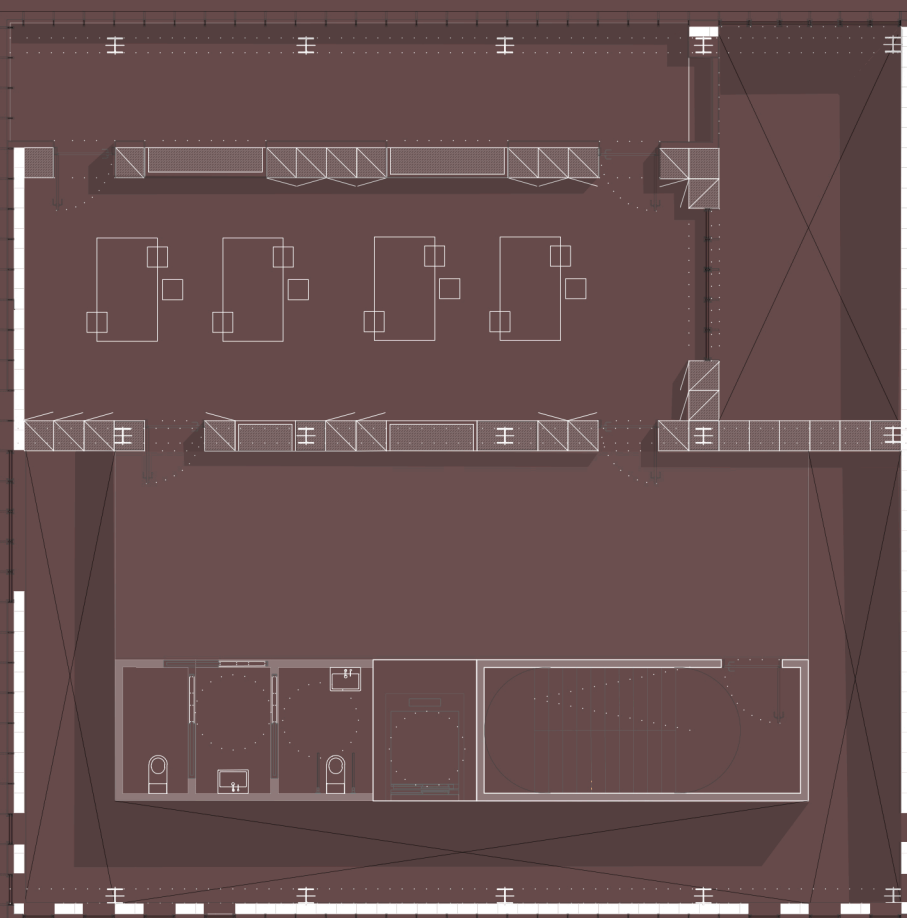
IKASLEA: Ane Rodriguez Txoperena  
TUTOREA: Ula Iruretagoyena



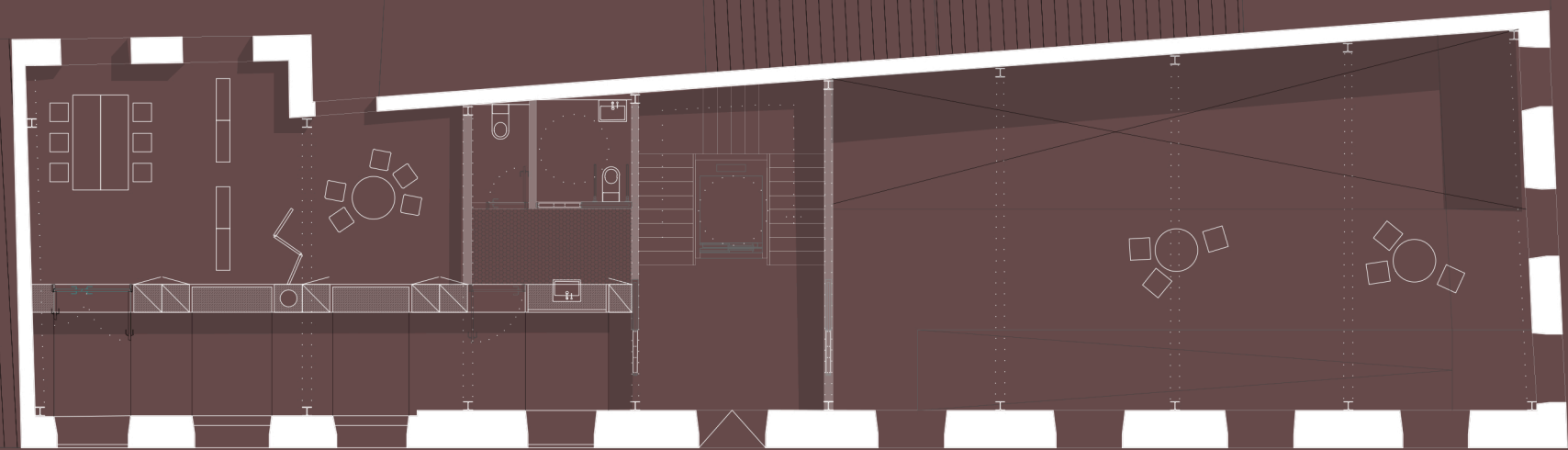
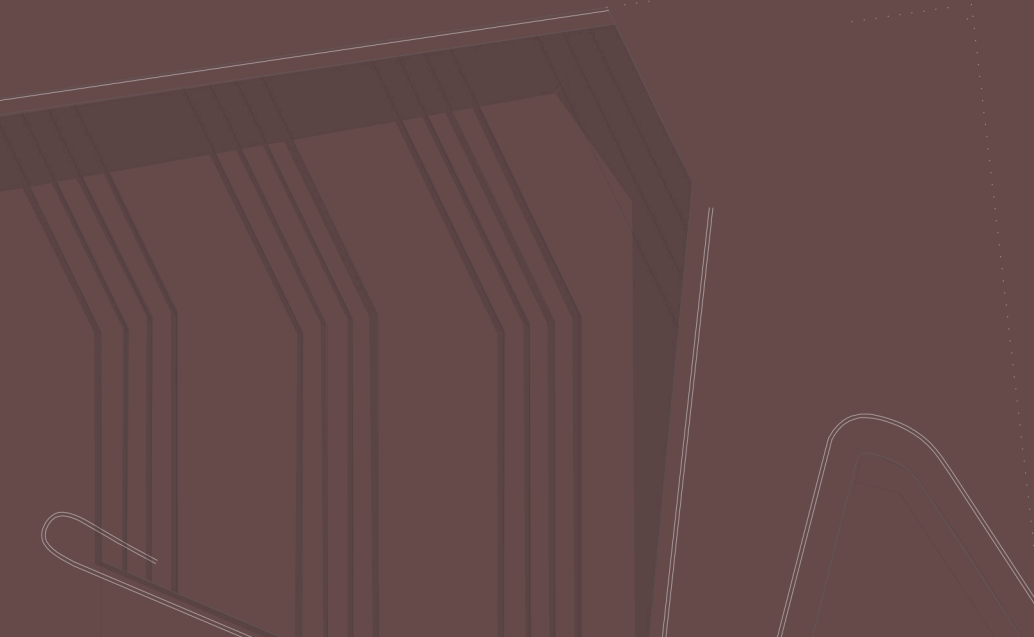
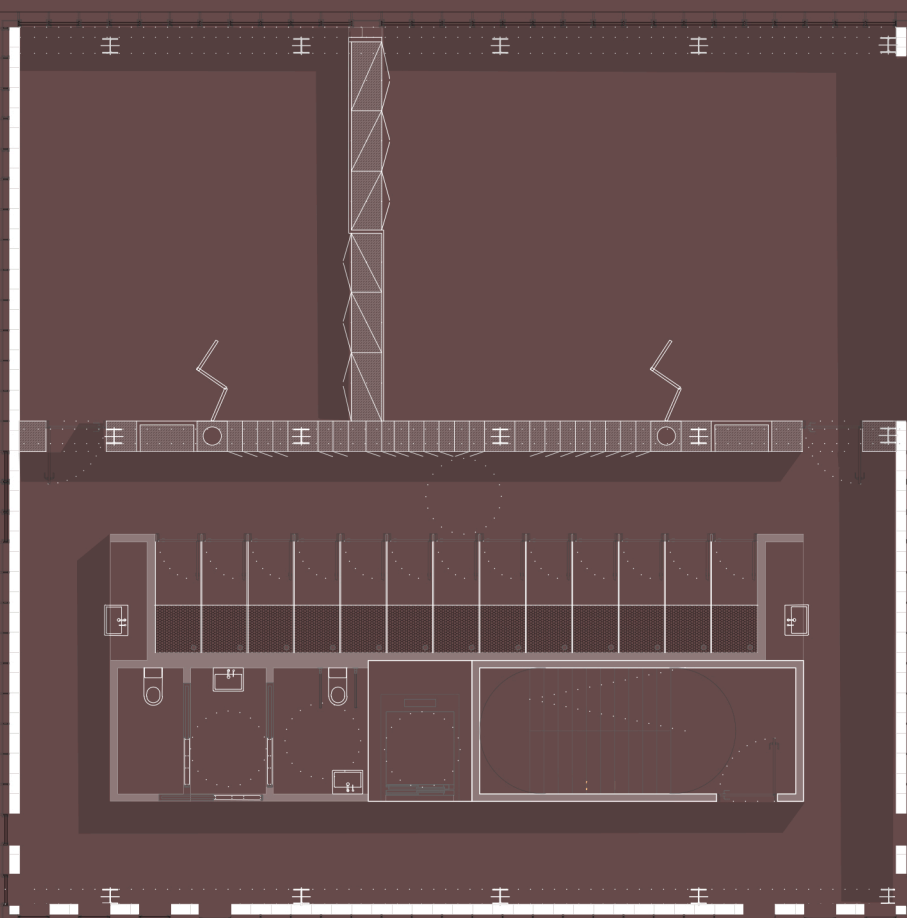
\_3 solairua



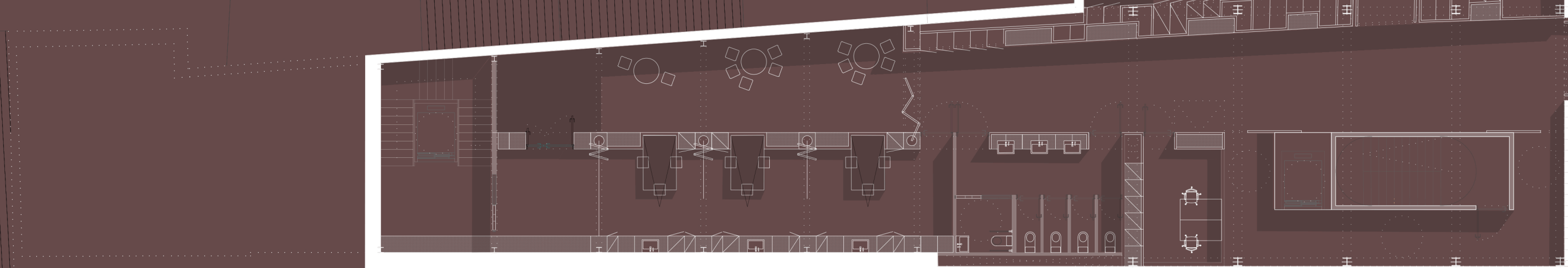
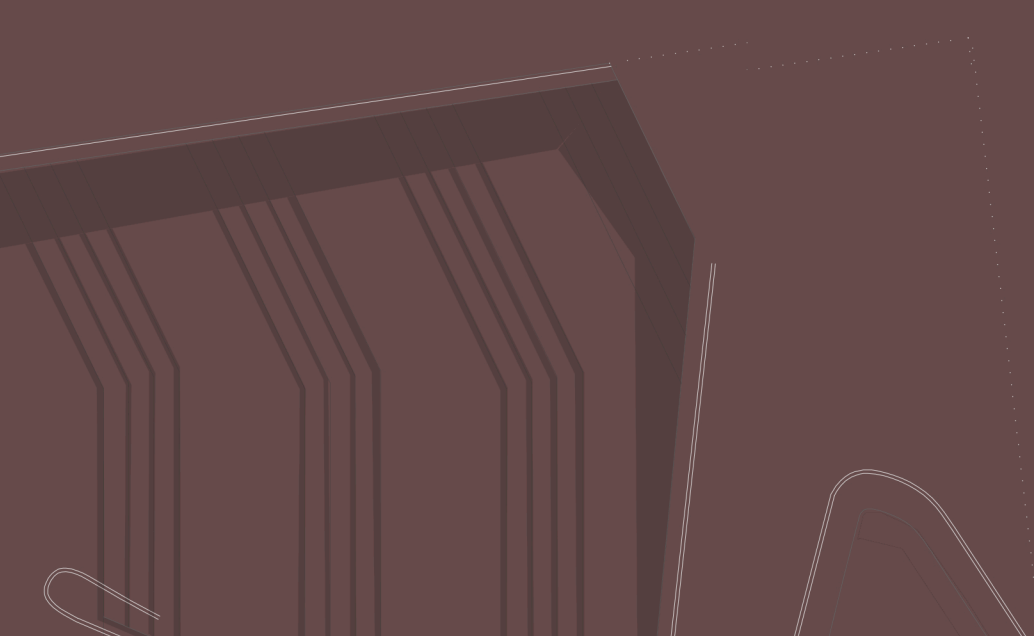
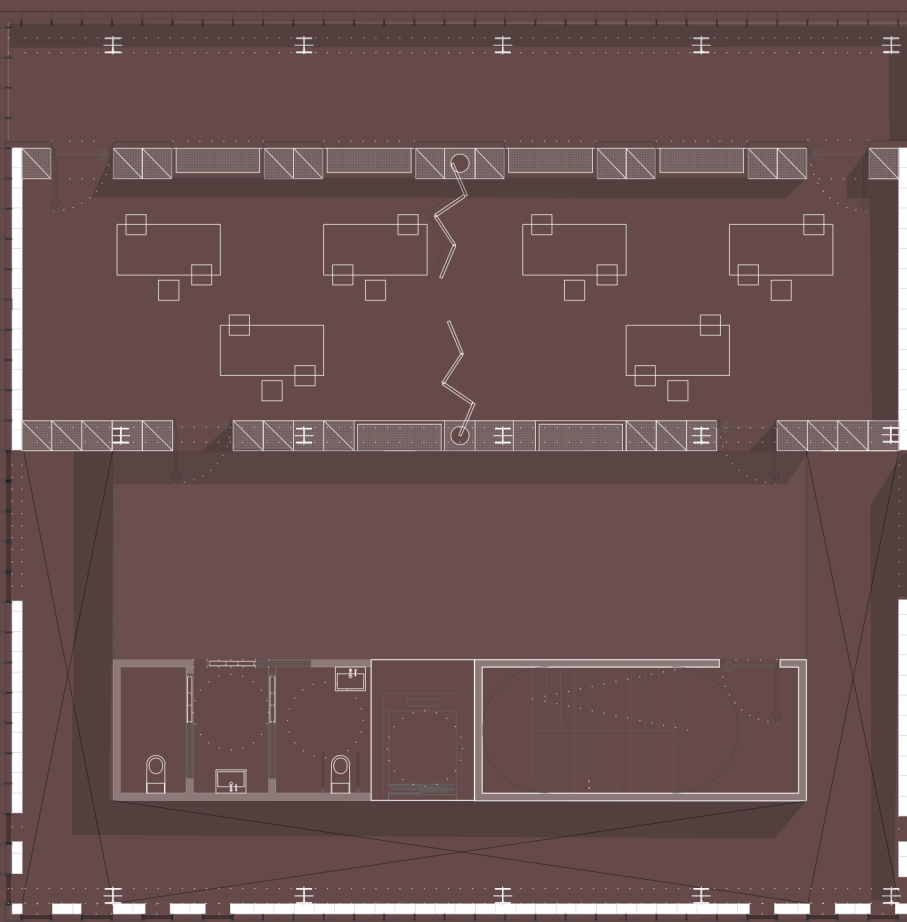
\_2 solairua



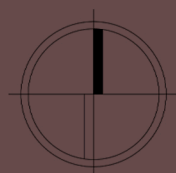
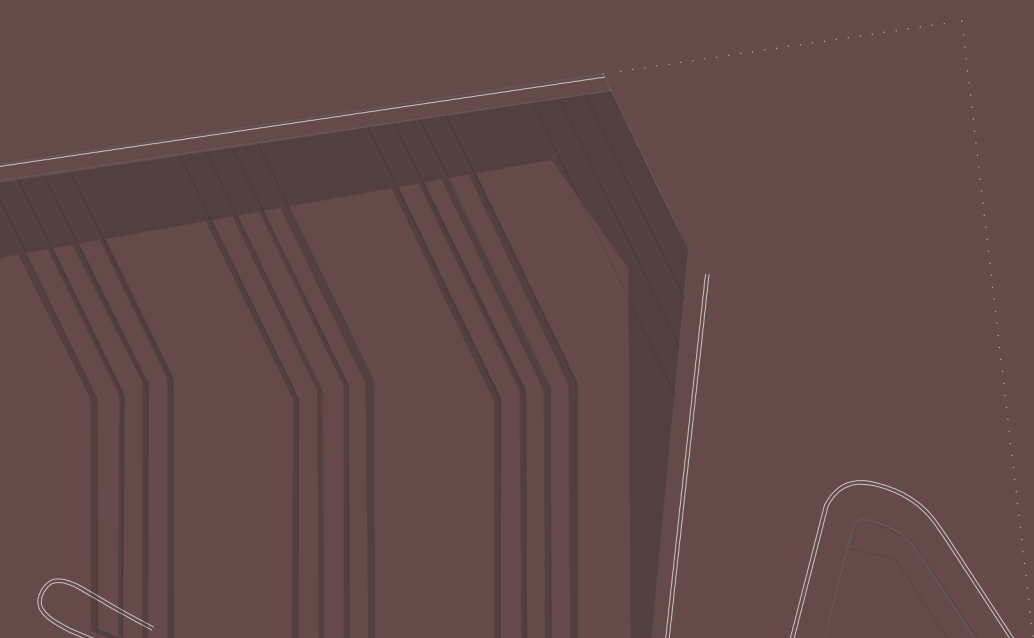
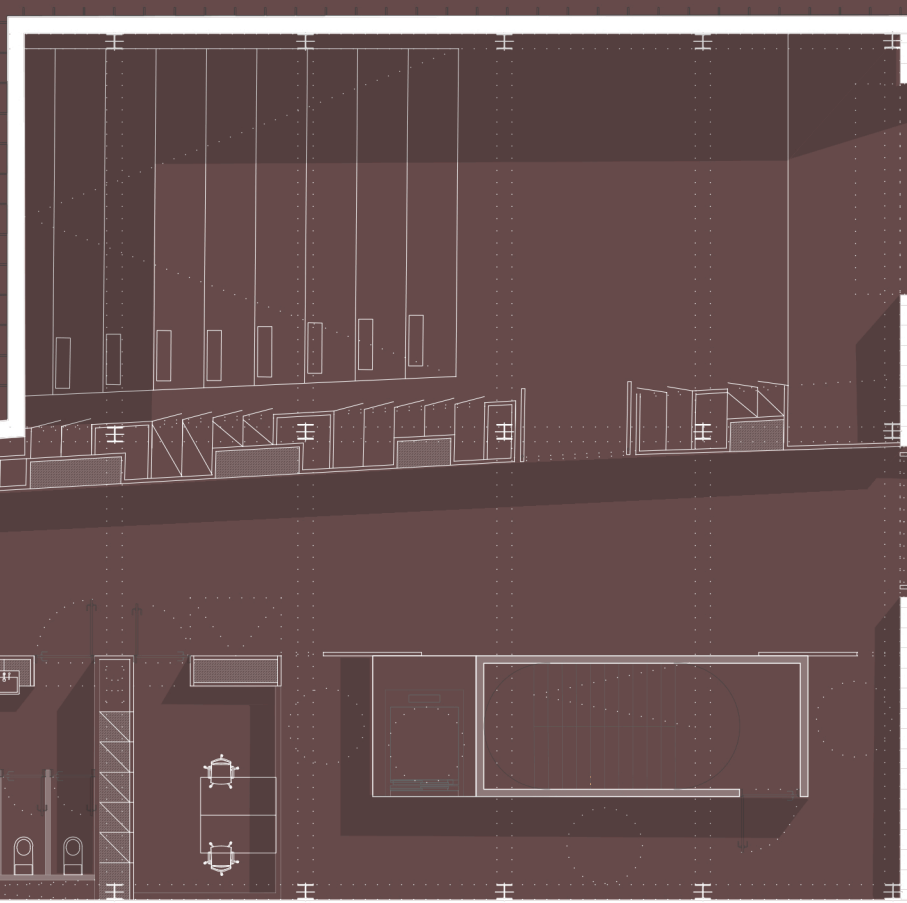
\_1 solairua



\_0 solairua



-1 solairua

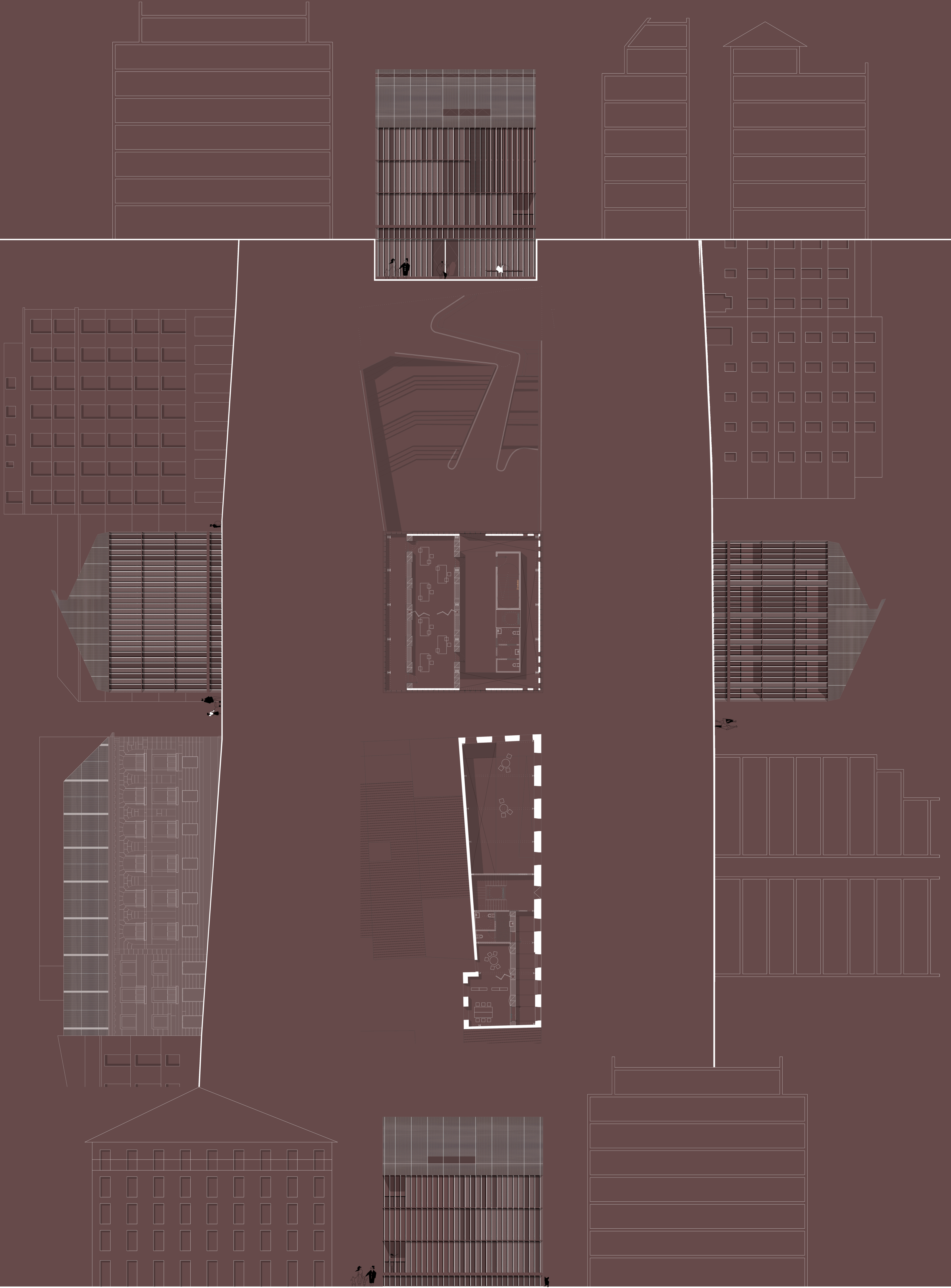




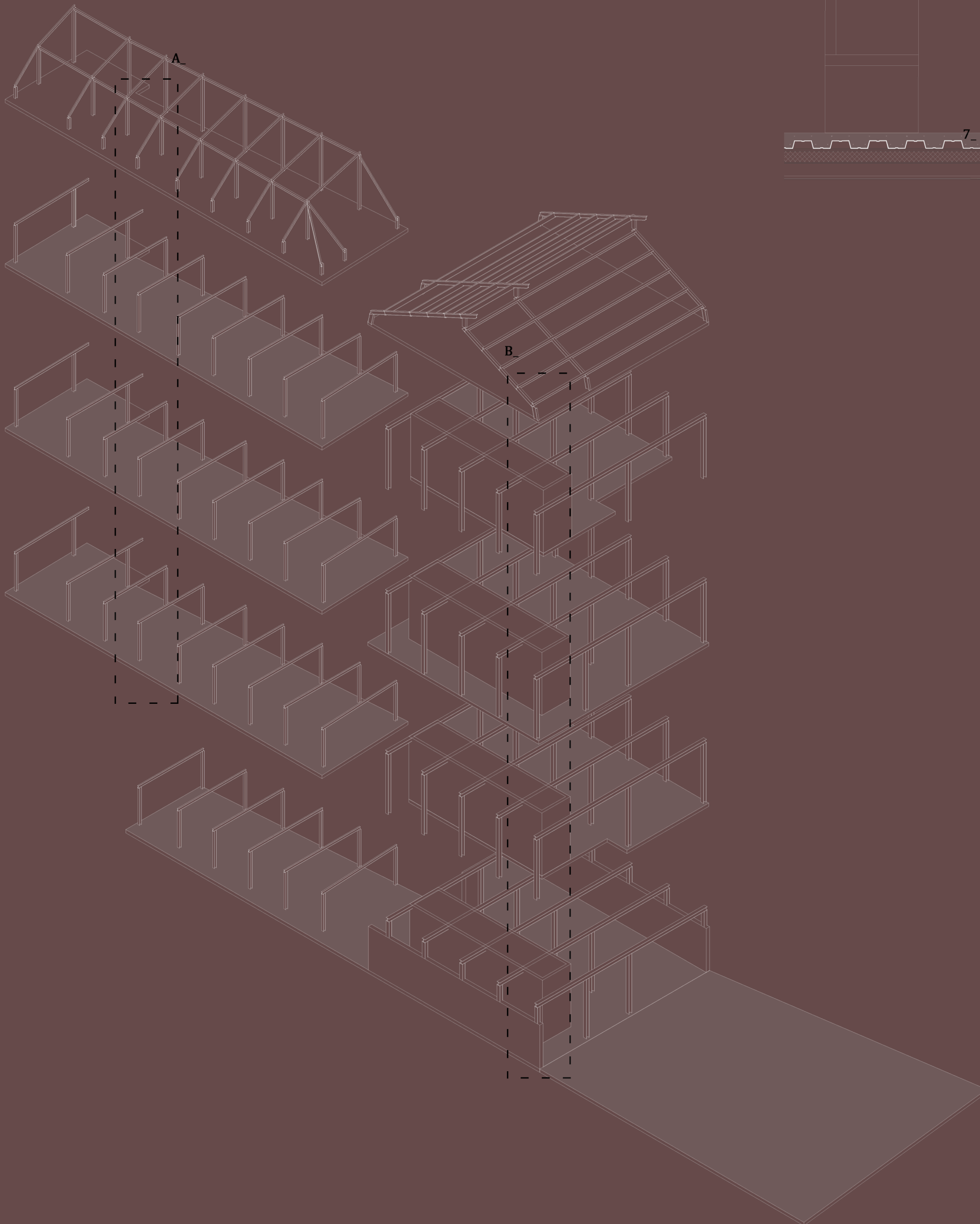
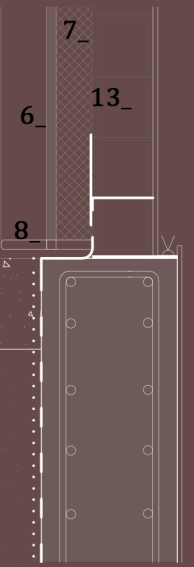
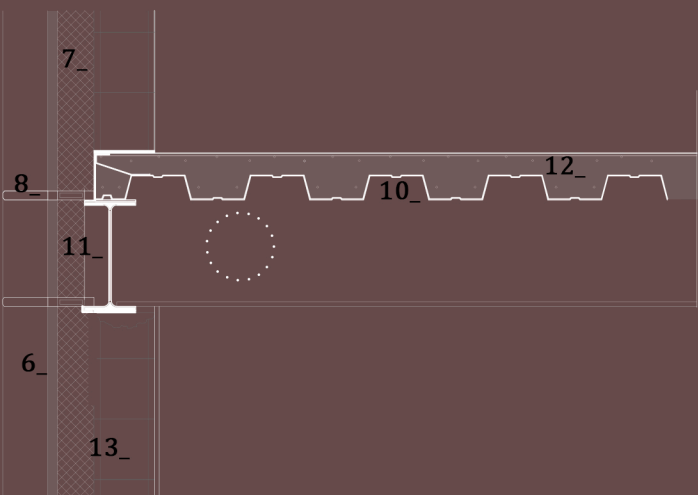
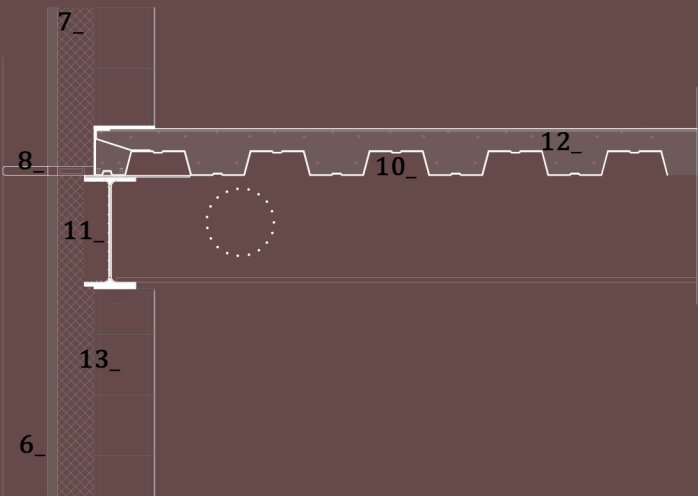
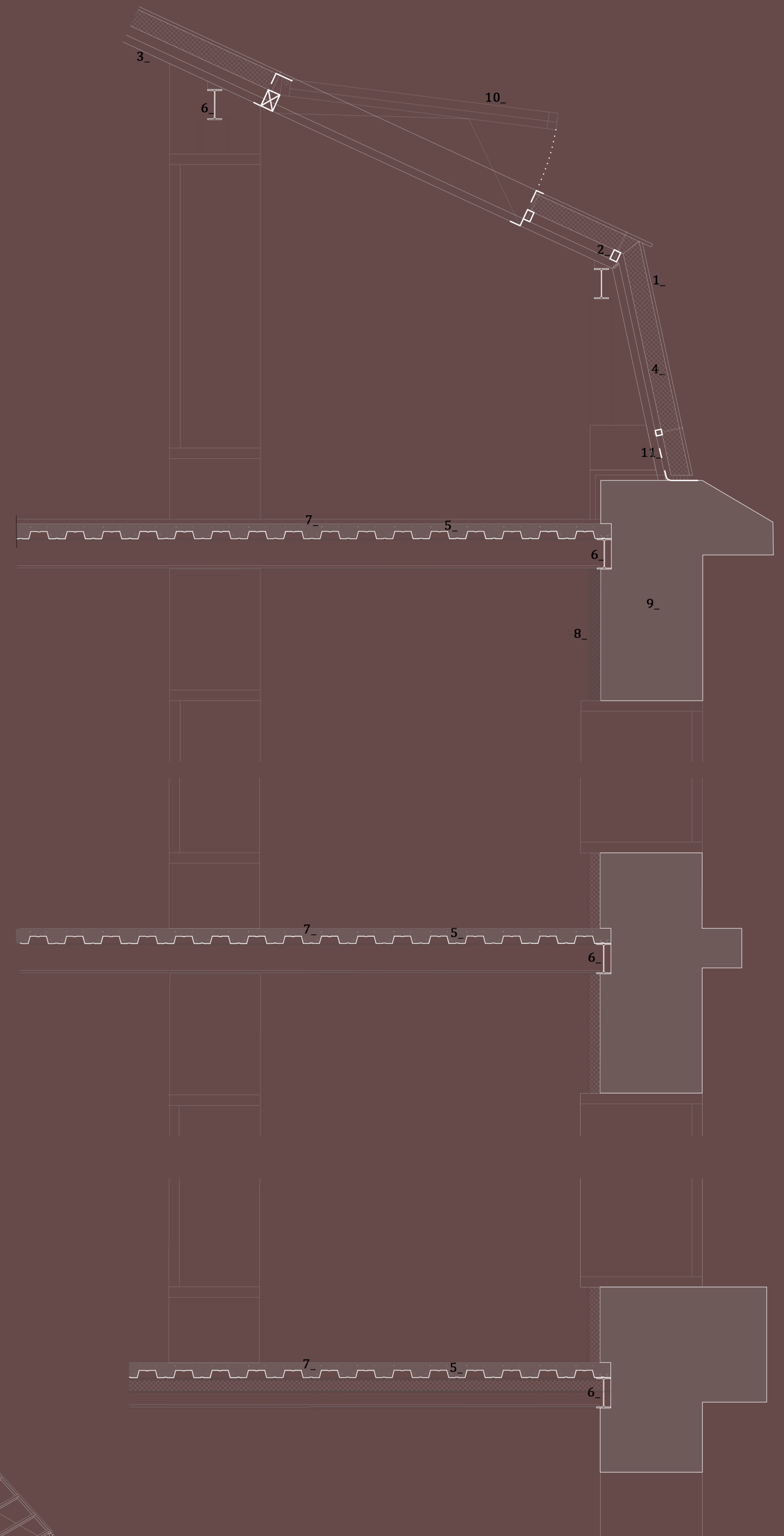
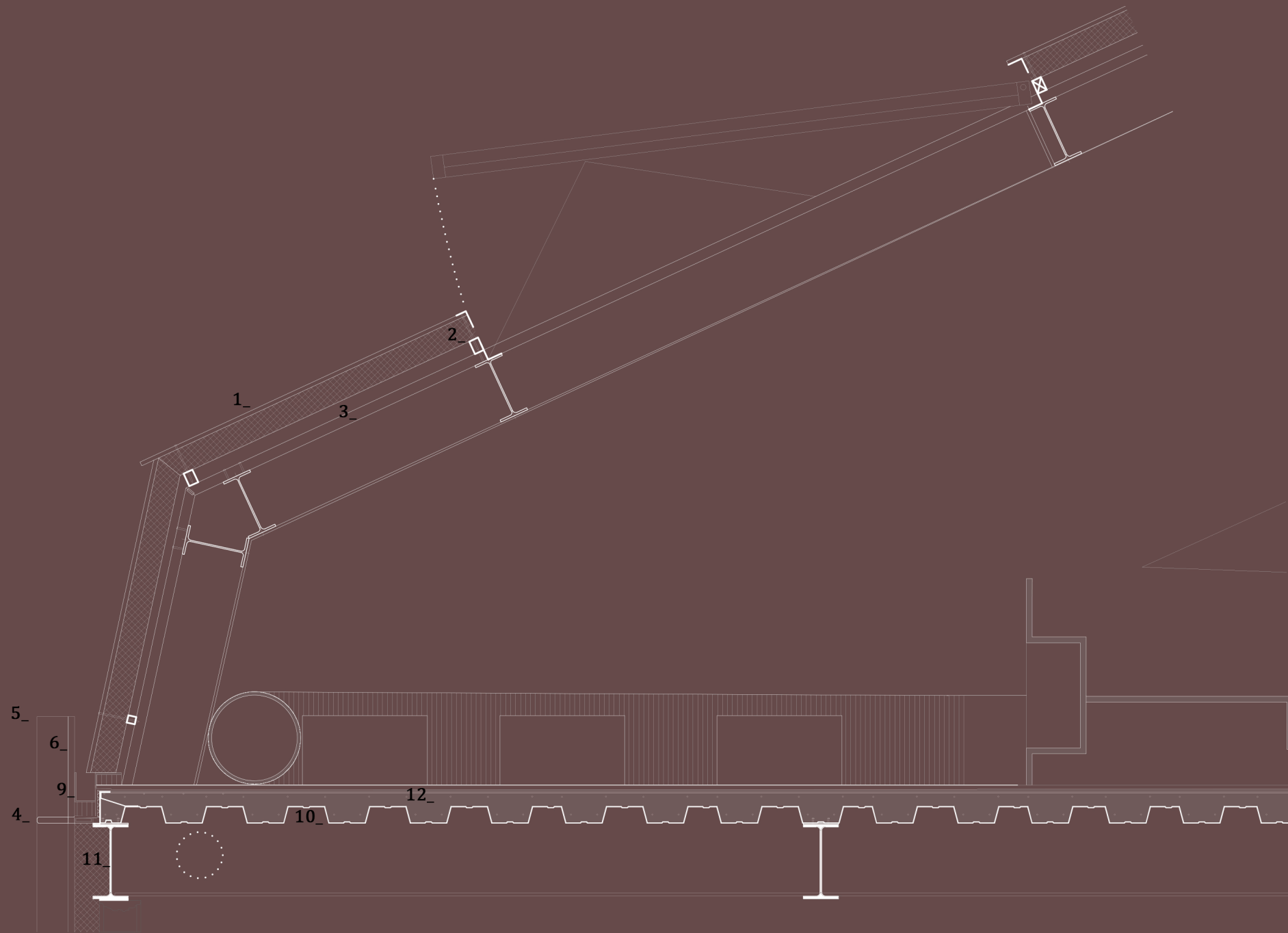
# ELKAR BIZI, JOSIZ.

AUZO-ETXEA DONOSTIAKO ALDE ZAHARREAN

IKASLEA: Ane Rodriguez Txoperena  
TUTOREA: Ula Iruretagoyena







- \_A
- 1\_Panel sandwich akabera
  - 2\_Rastrel metalikoa horizontala
  - 3\_Zurezko tabiak
  - 4\_Lanazko isolamendua
  - 5\_Forjatu arina (txapa kolaborantea)
  - 6\_Ipe 200 (egitura metalikoa)
  - 7\_Lauza
  - 8\_Trasdosatua
  - 9\_Egungo eraikina
  - 10\_Kristal trasluziduzko leihoa
  - 11\_Lamina iragazgaitza

- \_B
- 1\_Panel sandwich akabera
  - 2\_Rastrel metalikoa horizontala
  - 3\_Zurezko tabiak
  - 4\_Irteti horizontala
  - 5\_Irteti bertikala
  - 6\_Aluminiozko txapa anodizatua
  - 7\_Lanazko isolamendua
  - 8\_Aluminiozko perfil anodizatua
  - 9\_Erretena
  - 10\_Forjatu arina (txapa kolaborantea)
  - 11\_Ipe 360 (egitura metalikoa)
  - 12\_Lauza
  - 13\_Hormigoizko blokea (40x20cm)
  - 14\_Eustorma
  - 15\_Geotextila
  - 16\_Lamina iragazgaitza

