

Azalak

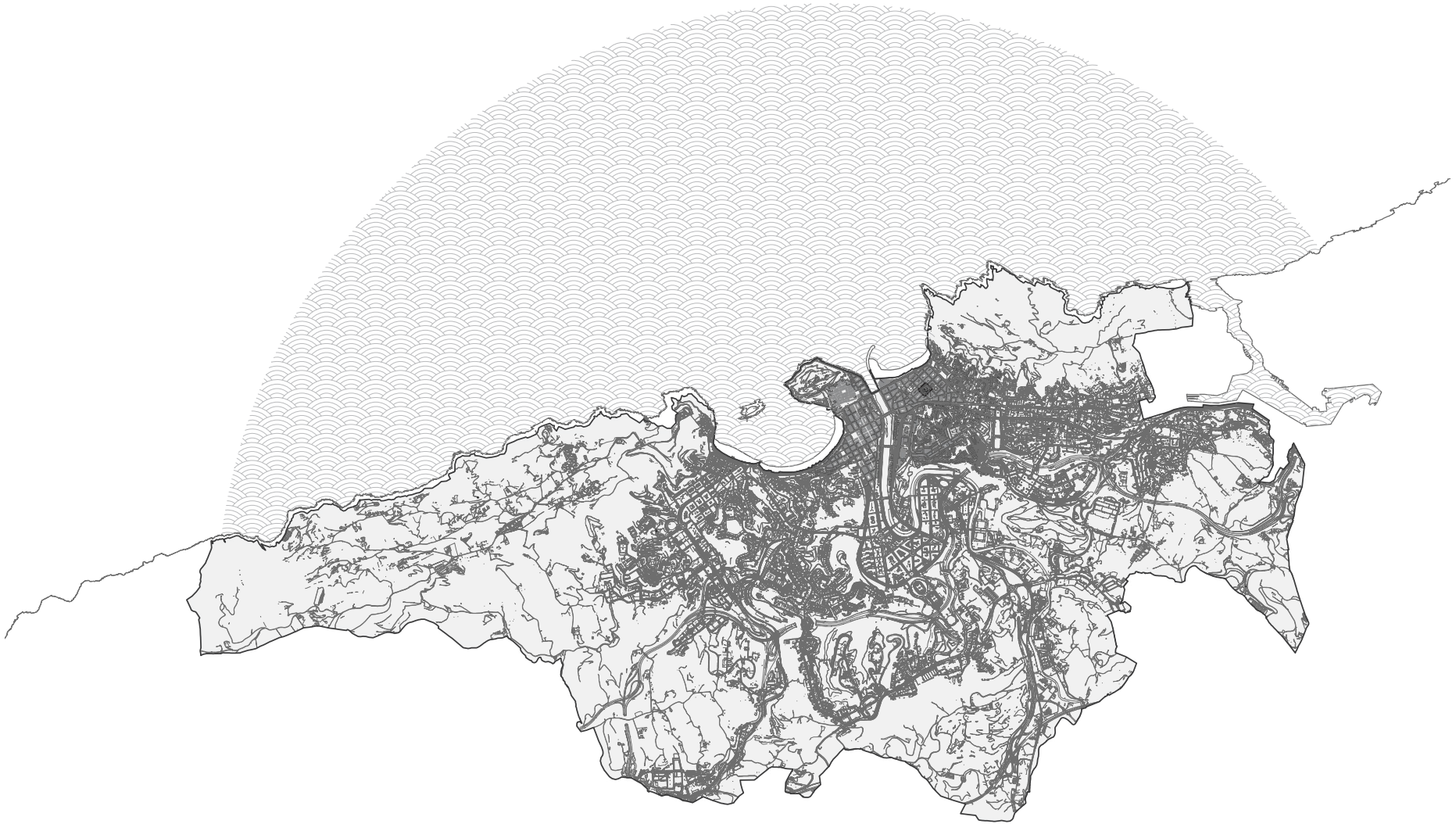
Erabilera anitzeko eraikin multzoa Gros-eko auzoan

Master Amaierako Lana 2019/2020 - Jonatan Diaz Perez

Aurkezpena

Kokapena

Donosti



Gros

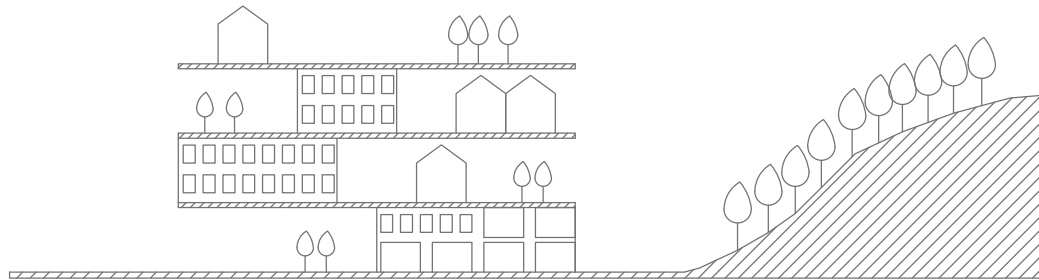


Behe Nafarroa plaza

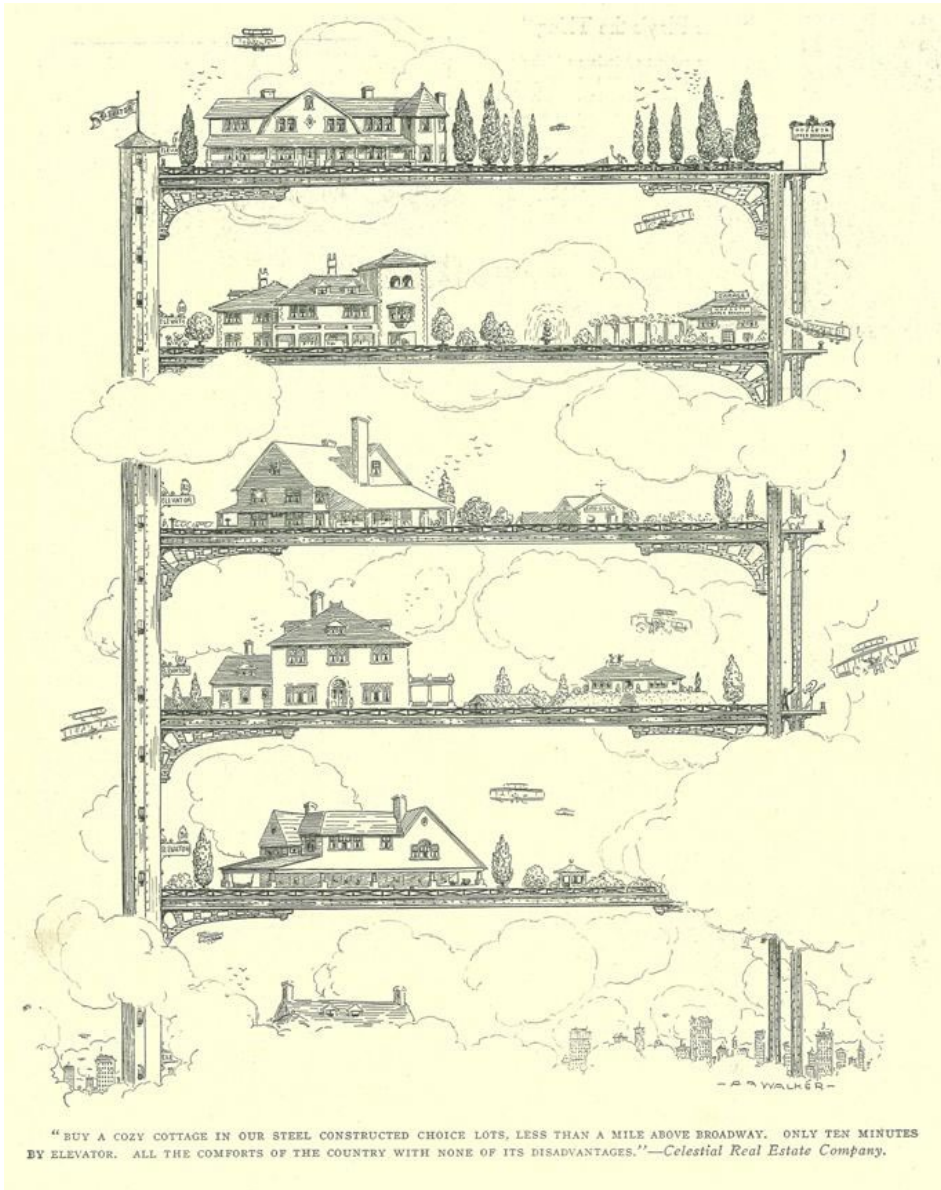


Alderdi teorikoak

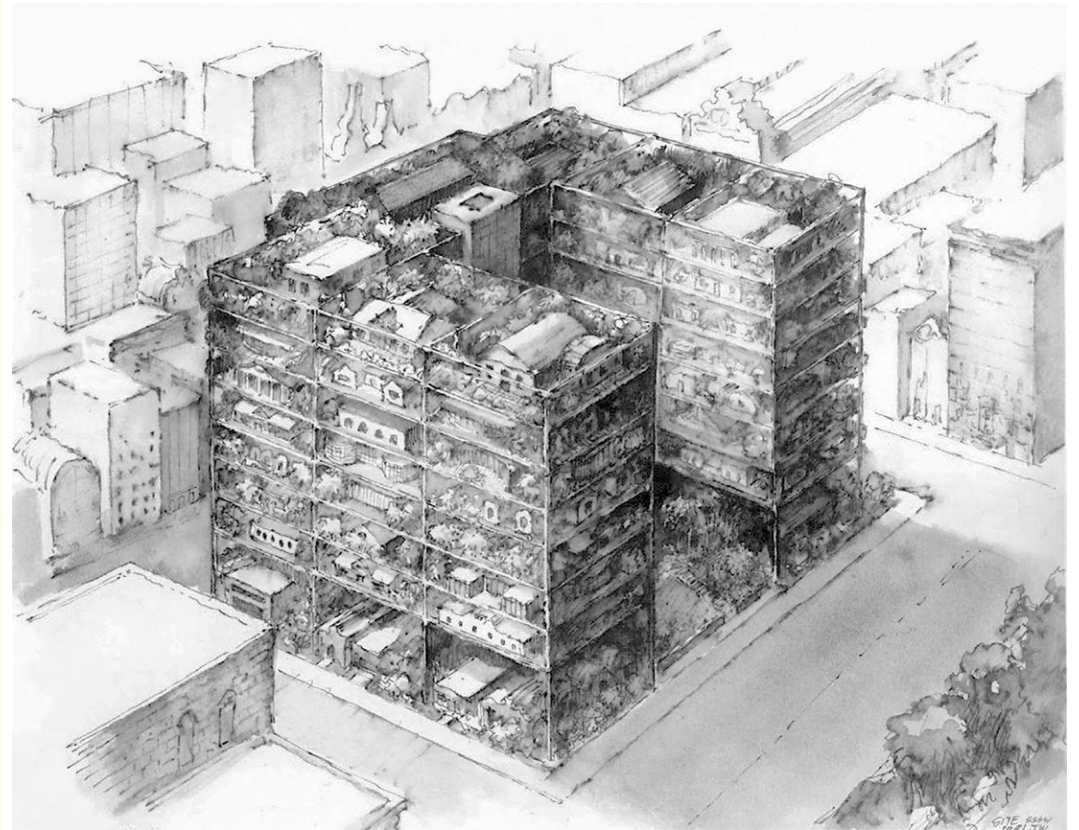
Lurzorua pilatu



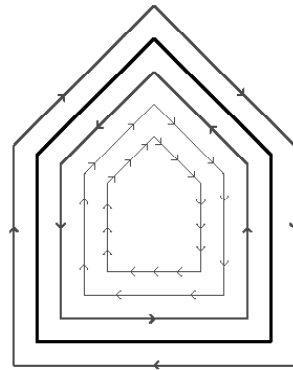
Lurzorua pilatu



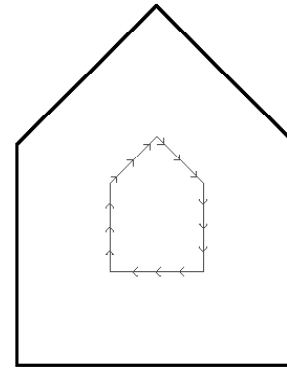
"BUY A COZY COTTAGE IN OUR STEEL CONSTRUCTED CHOICE LOTS, LESS THAN A MILE ABOVE BROADWAY. ONLY TEN MINUTES BY ELEVATOR. ALL THE COMFORTS OF THE COUNTRY WITH NONE OF ITS DISADVANTAGES."—Celestial Real Estate Company.



Iraupenak

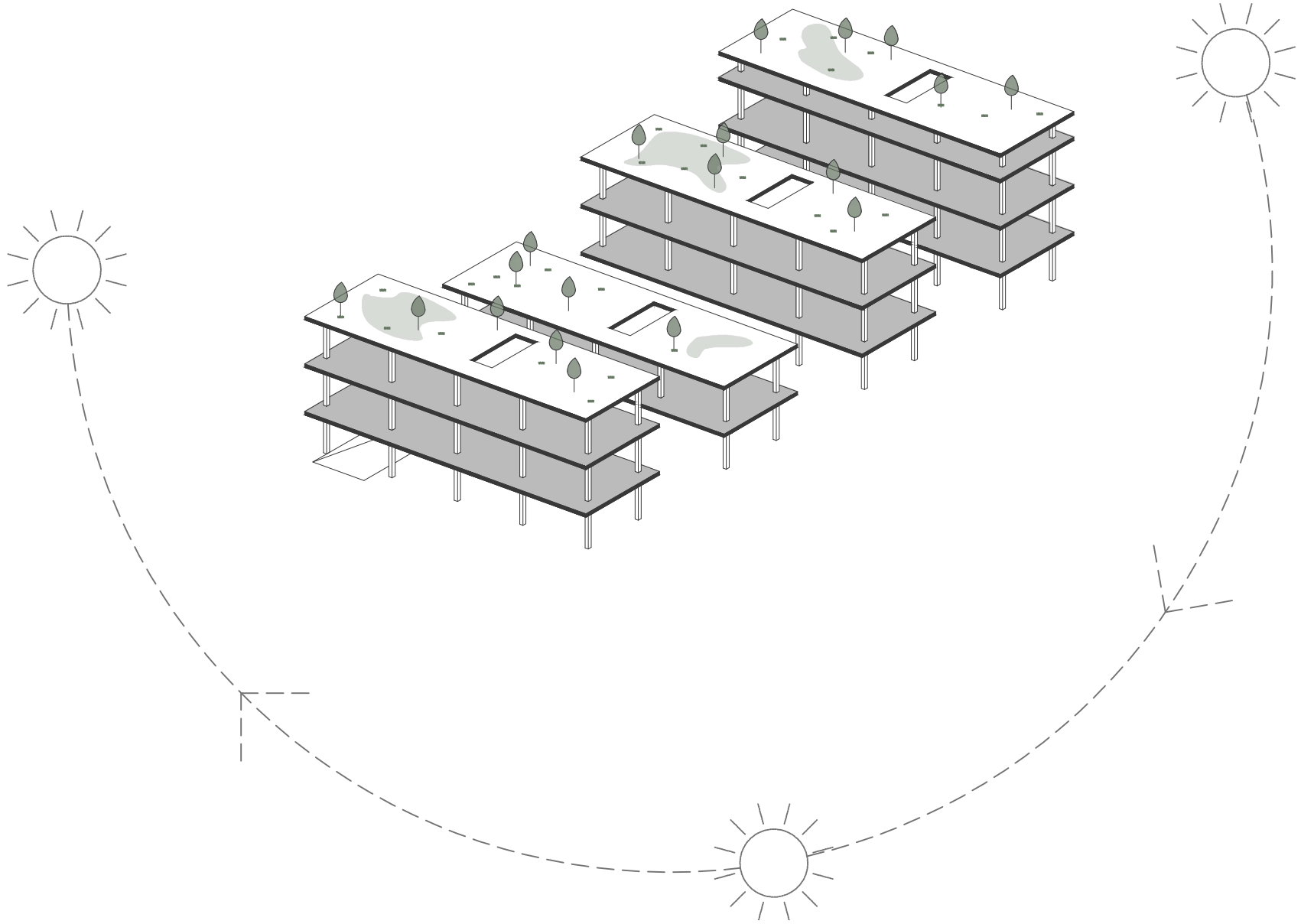


- ←←← Urte 1 - Objektuak
- ←←← 5 urte - Barnealdea
- 15 urte - Instalazioak
- ← 70 urte - Fatxada
- 200 urte - Egitura

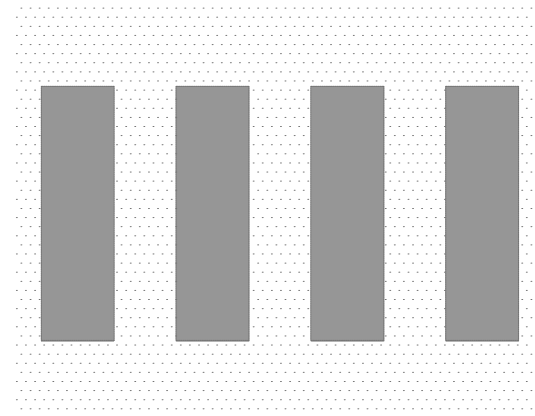
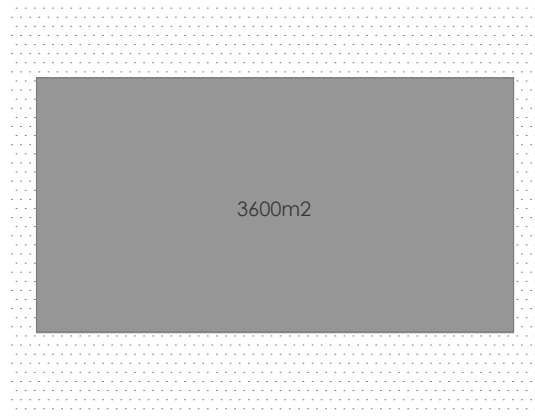


- ←←← 15 urte - Barnealdea
- 200 urte - Egitura

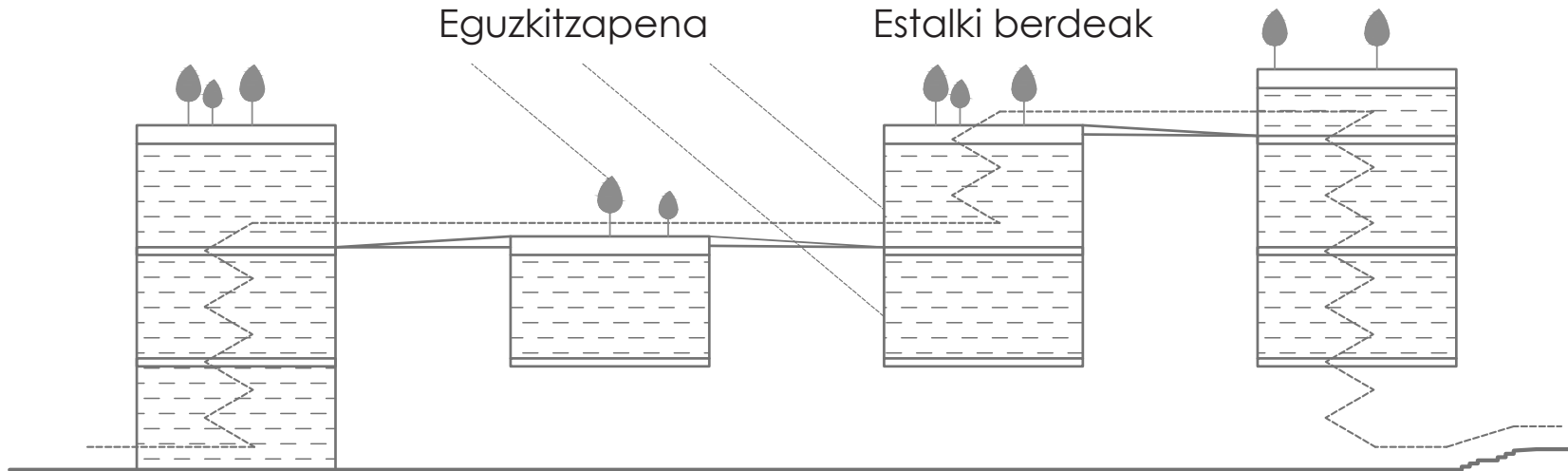
Proiektua



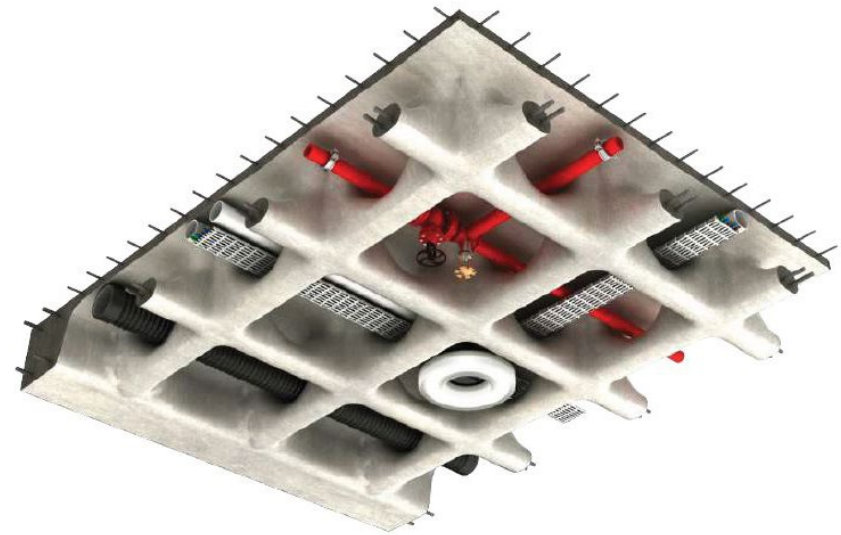
Lerrokadurak birplanteatu



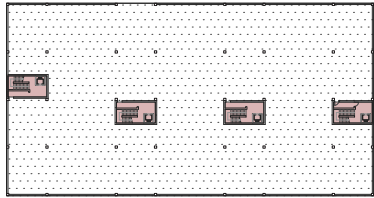
Egitura produktiboa



Egitura sistema

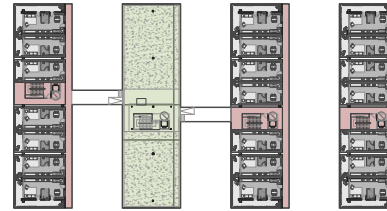


Programa



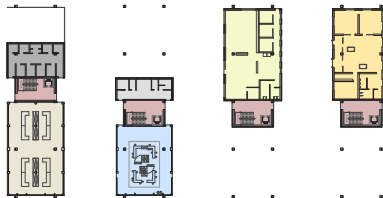
P-1 Sotoa
Aparkalekua
Komunikazio nukleoa

2814,83m²
80m² (20x4)



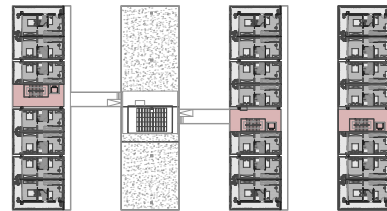
P4 Laugarrenengo solairua

Etxebizitzak (41,20x15+49x6) 912m²
Komunikazio nukleoa (121,70x3) 217,2m²
Estalki berdea 517,65m²



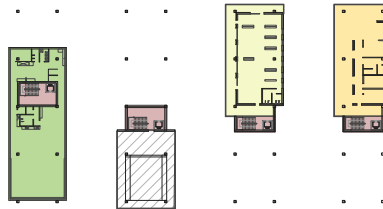
PB Behe solairua
Merkatua
Komunikazio nukleoa
Taberna
Gaztegunea
Liburutegia
Biltegia
Komun publikoak

235,70m²
171,60m² (42,9x4)
171,26m²
216,60m²
248,15m²
95,60m²
60,90m²



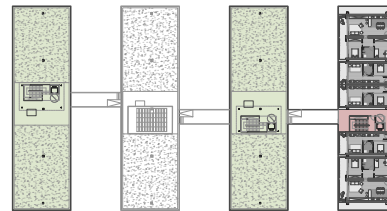
P5 Bostgarrenengo solairua

Etxebizitzak (41,20x15+49x6) 912m²
Komunikazio nukleoa 128,70m² (42,9x3)



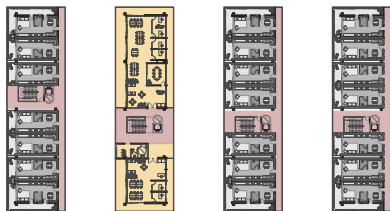
P1 Lehenengo solairua
Jatetxea
Komunikazio nukleoa
Erabilera anitzeko espazioa
Hurtzaindegia
Liburutegia

270m²
171,60m² (42,9x4)
200m²
297,60m²
297,60m²



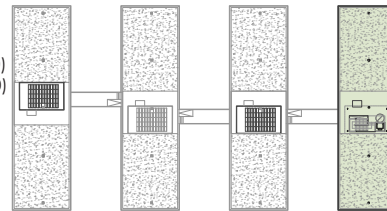
P6 Seigarrenengo solairua

Etxebizitzak (41,20x3+90,2x2) 304m²
Komunikazio nukleoa 121,70m²
Estalki berdea 1035,30m² (517,65x2)



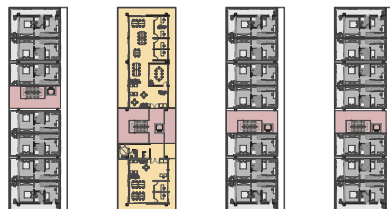
P2 Bigarrenengo solairua
Etxebizitzak
Komunikazio nukleoa
Bulegoak

912m² (41,20x15+49x6)
217,2m² (121,70x3+95,50)
456,90m² (185,30+271,60)



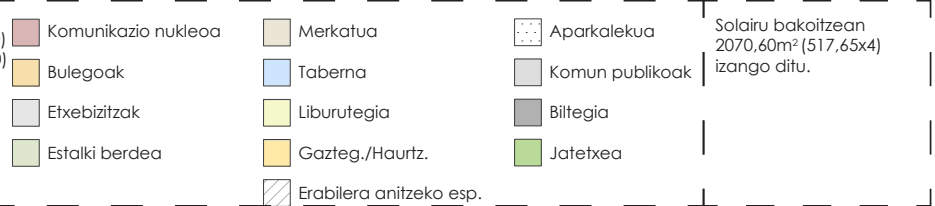
PE Estalkia

Estalki berdea
517,65m²

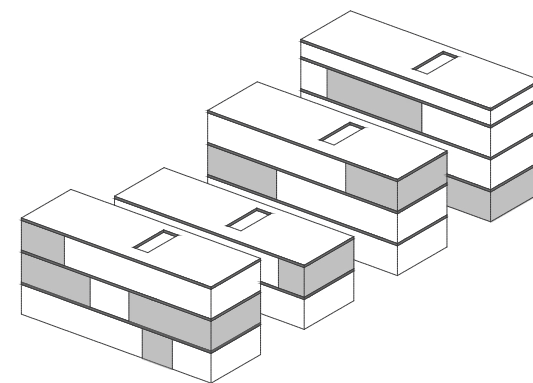
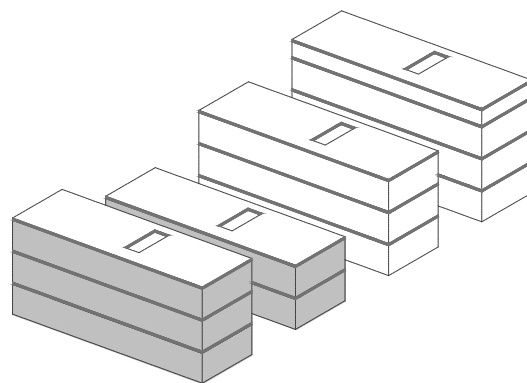
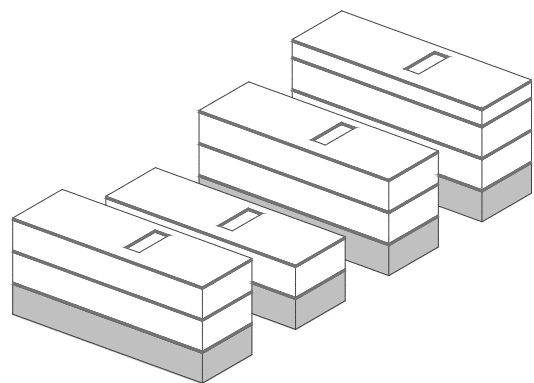


P3 Hirurengoko solairua
Etxebizitzak
Komunikazio nukleoa
Bulegoak

912m² (41,20x15+49x6)
224,20m² (42,90x3+95,50)
456,90m² (185,30+271,60)



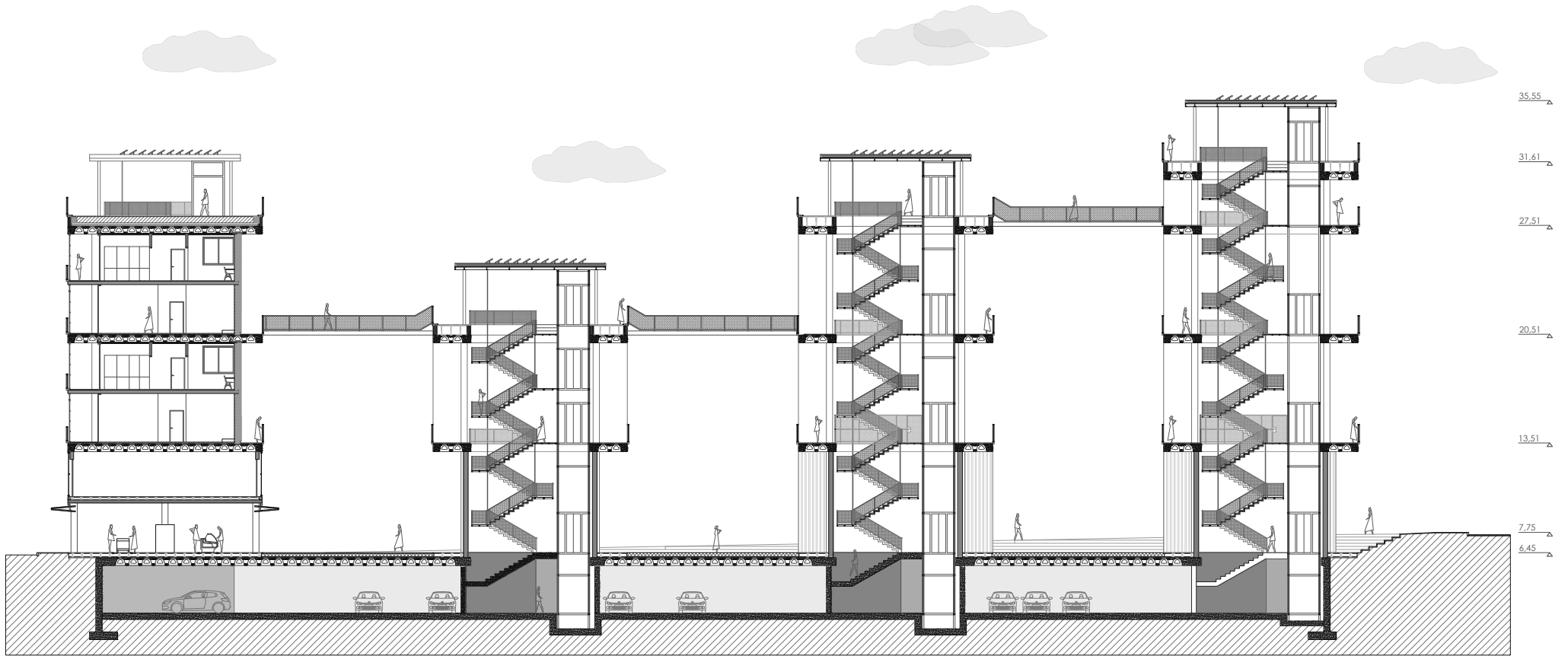
Distribuzio aukerak



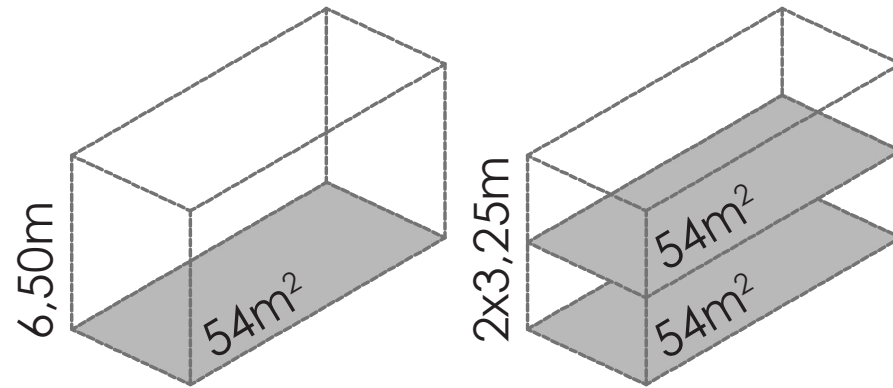
Behe oina



Komunikazio elementuak b ebaketa

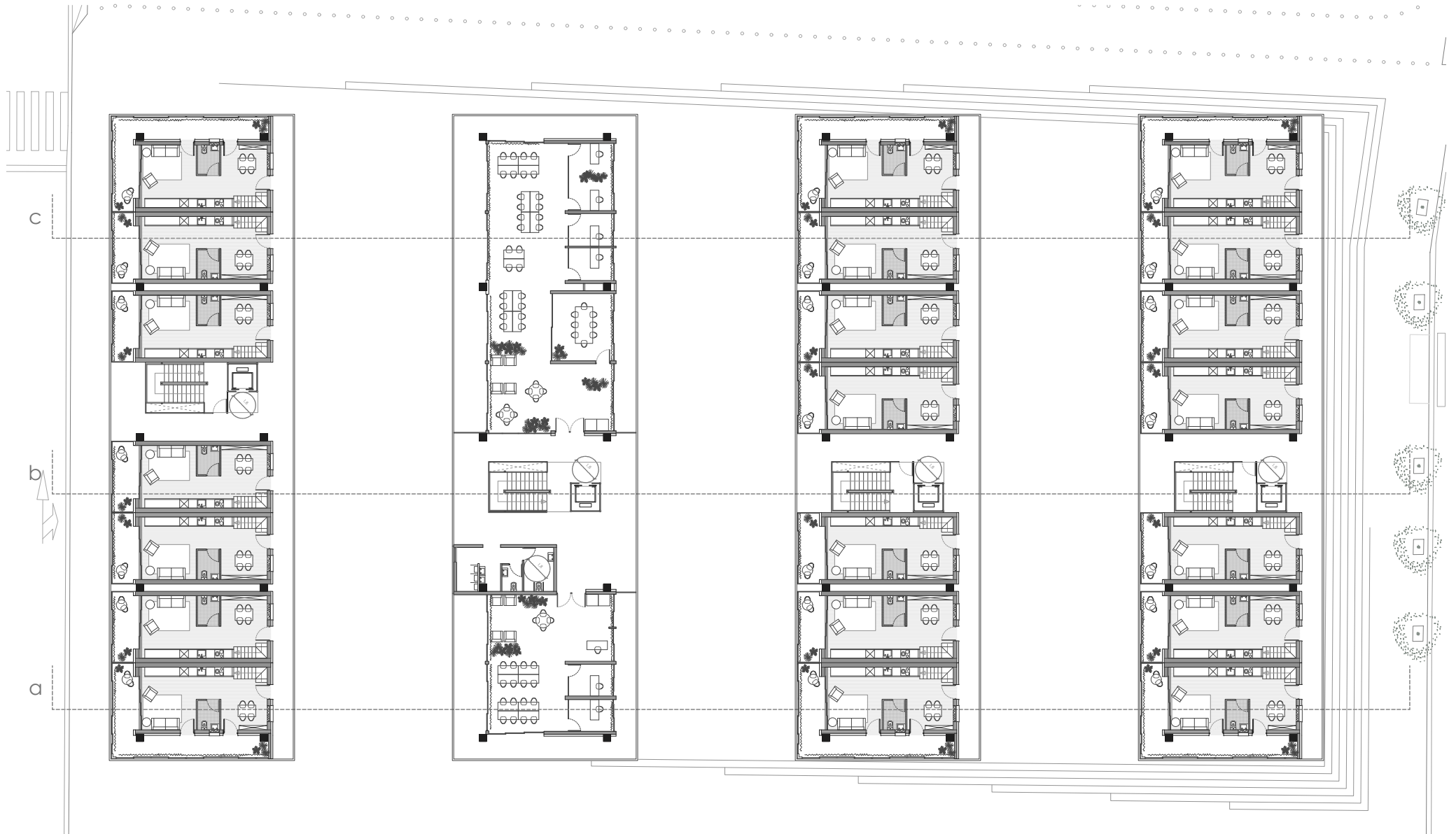


Partzelak

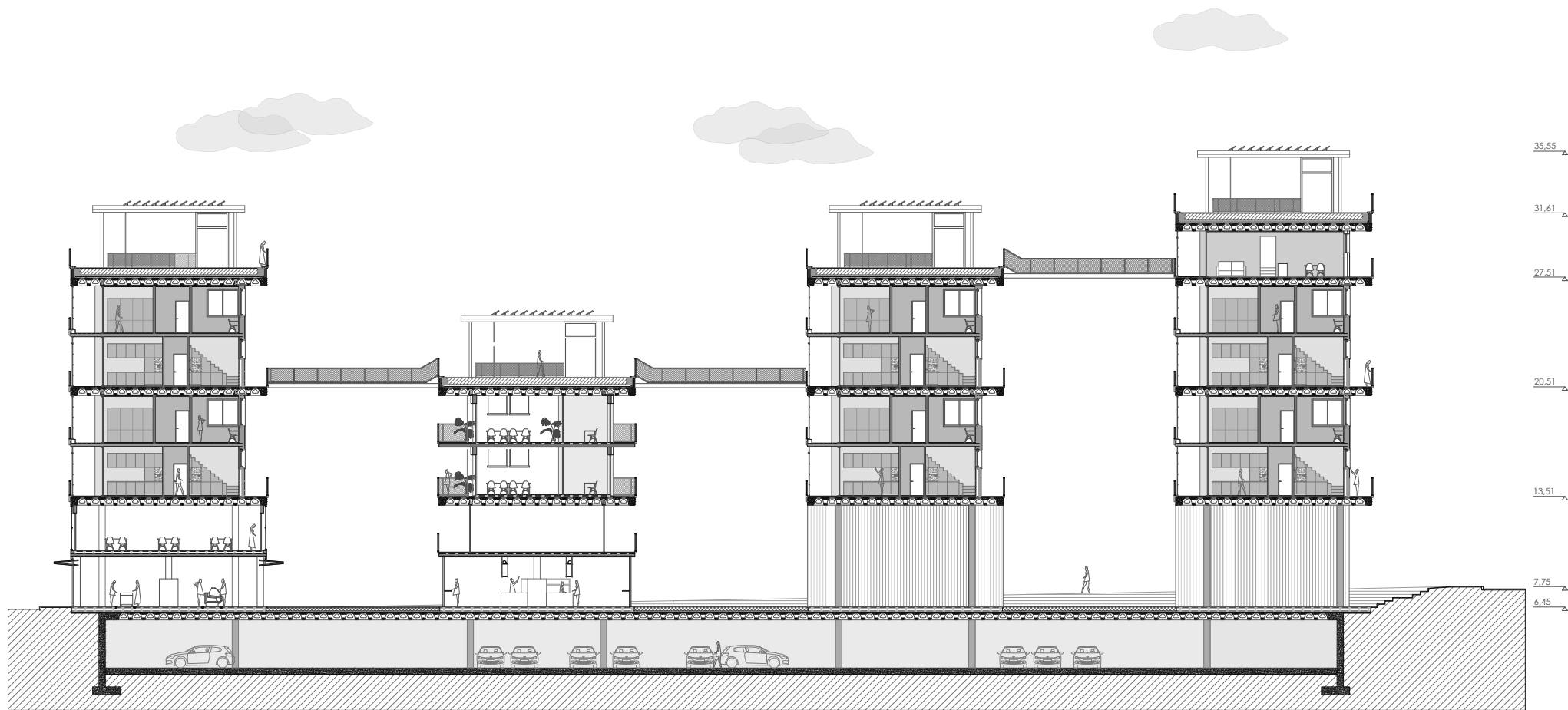


Partzelen banaketa

Etxebizitza sarrera solairua

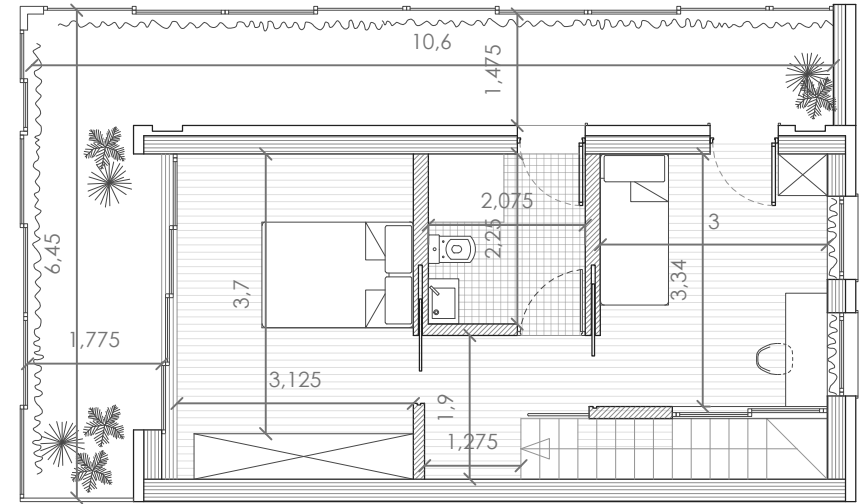
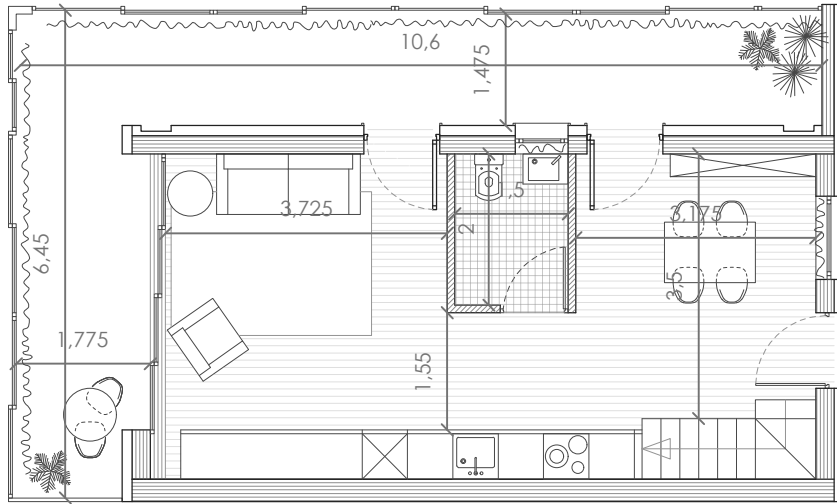


Partzelen banaketa a ebaketa

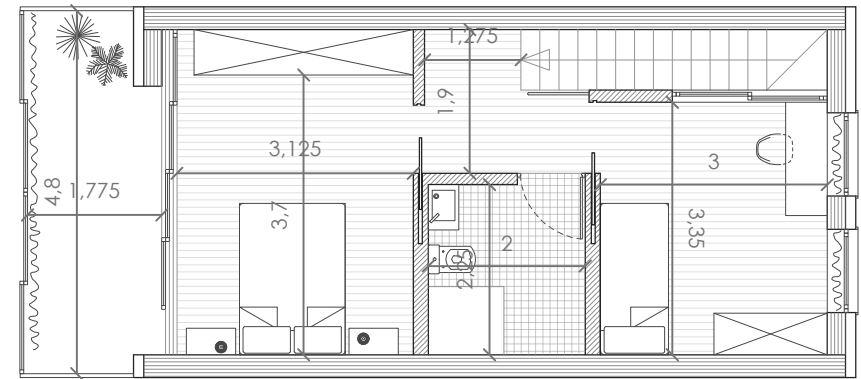
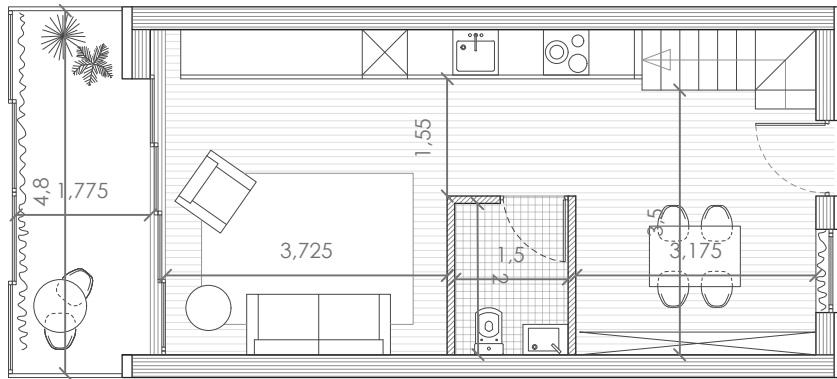


Etxebizitza moduluak bi altueratakoak

Iskinako modula
98m²



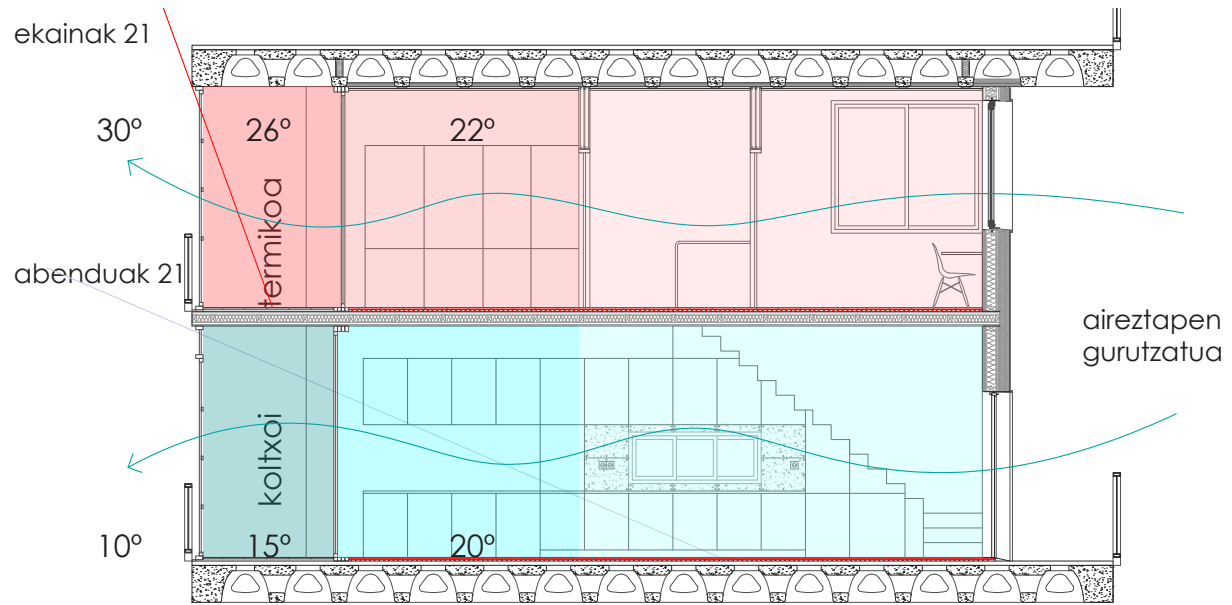
Erdialdeko modula
82,40m²



Etxebizitza moduluak
altuera bakarrekoak



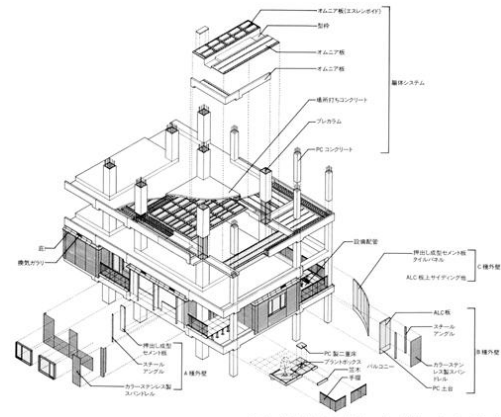
Etxebizitza moduluak ebaketa



Irudia



Next 21. Osaka Gas company. Yosifika Utida



Maison Medicale Student housing. Lucien Kroll



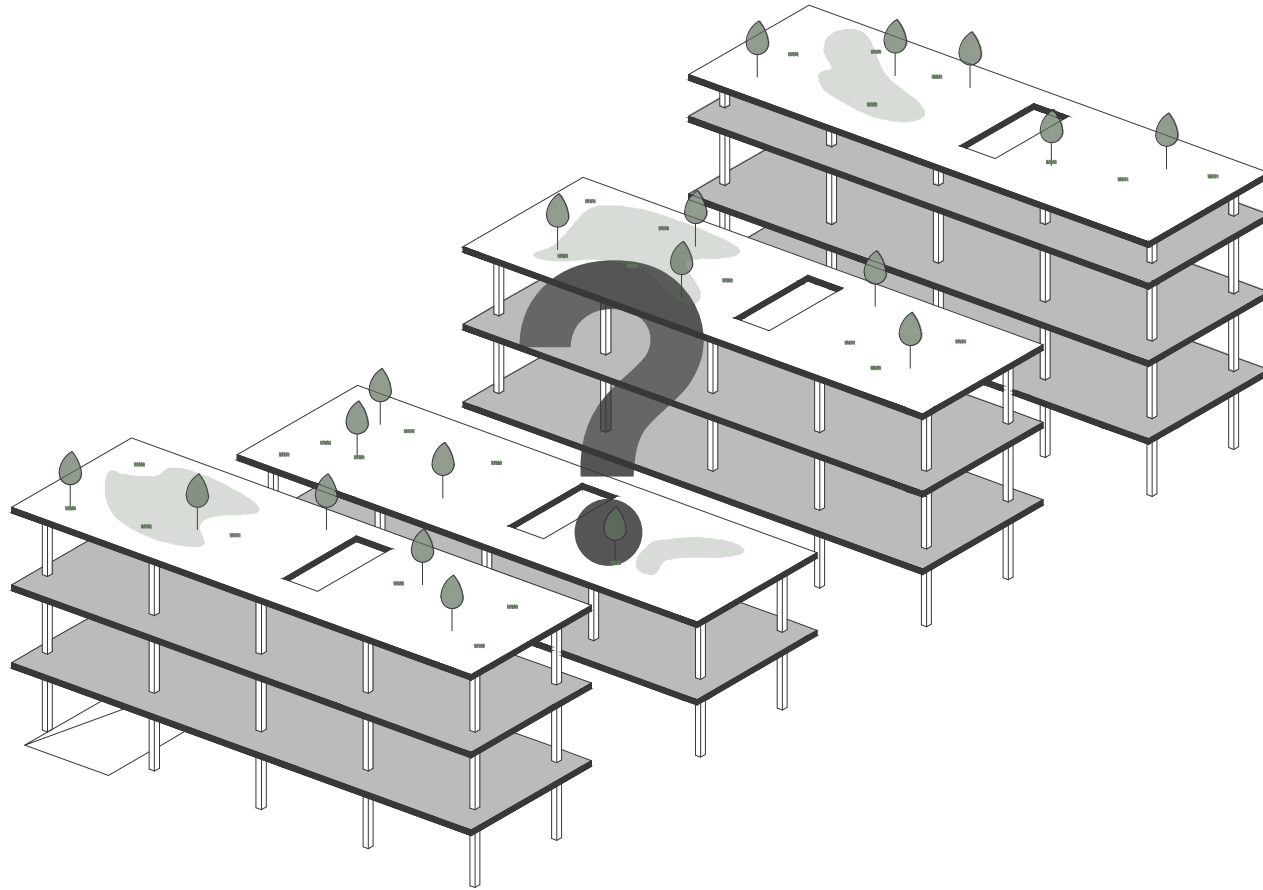
Hegoaldeko fatxada



Iparaldeko fatxada



2075





Pierre Huyghe. Unfilled

Eskerrik asko

