

1 Suspended sediment delivery from small catchments to the Bay of Biscay. What
2 are the controlling factors?

3 Zabaleta, A.^{*1}, Antiguada, I.¹, Barrio, I.², Probst, J.-L.³

4 ¹Hydrology and Environment Group, Science and Technology Faculty,
5 University of the Basque Country UPV/EHU, 48940 Leioa, Basque Country
6 (Spain)

7 ²Department of Applied Mathematics, Statistics and Operations Research,
8 Science and Technology Faculty, University of the Basque Country UPV/EHU,
9 48940 Leioa, Basque Country (Spain)

10 ³EcoLab, University of Toulouse, CNRS, INPT, UPS, Toulouse, France.

11

12 *Corresponding author: Tel.: +34946012493; fax: +346012470; e-mail address:

13 ane.zabaleta@ehu.es (A. Zabaleta)

14

1 **Abstract**

2 The transport and yield of suspended sediment (SS) in catchments all over the
3 world have long been topics of great interest. This paper addresses the scarcity
4 of information on SS delivery and its environmental controls in small
5 catchments, especially in the Atlantic region. Five steep catchments in
6 Gipuzkoa (Basque Country) with areas between 56 and 796 km² that drain into
7 the Bay of Biscay were continuously monitored for precipitation, discharge and
8 SS concentration (SSC) in their outlets from 2006 to 2013. Environmental
9 characteristics such as elevation, slope, land-use, soil depth and erodibility of
10 the lithology were also calculated. The analysis included consideration of
11 uncertainties in the SSC calibration models in the final SSY estimations. The
12 total delivery of sediments from the catchments into the Bay of Biscay and its
13 standard deviation was $272,200 \pm 38,107 \text{ t}\cdot\text{yr}^{-1}$, or $151 \pm 21 \text{ t}\cdot\text{km}^{-2}\cdot\text{yr}^{-1}$, and the
14 suspended sediment yields (SSY) ranged from 46 ± 0.48 to $217 \pm 106 \text{ t}\cdot\text{km}^{-2}\cdot\text{yr}$
15 ¹. Hydroclimatic variables and catchment areas do not explain the spatial
16 variability found in SSY, whereas land-use (especially non-native plantations)
17 and management (human impacts) appear to be the main factors that control
18 this variability. Obtaining long-term measurements on sediment delivery would
19 allow for the effects of environmental and human induced changes on SS fluxes
20 to be better detected. However, the data provided in this paper provide valuable
21 and quantitative information that will enable decision makers to make more
22 informed decisions on land management while considering the effects the
23 delivery of SS.

24

25

1 **Keywords**

2 Suspended sediment yield, continuous monitoring, propagation of uncertainty,

3 environmental control, Atlantic environment

4

1 1. Introduction

2 Rivers constitute the main linkage between terrestrial and marine systems
3 (Knighton, 1998; Walling, 2006). The transport and yield of suspended sediment
4 (hereafter SS) in catchments all over the world have long been topics of great
5 interest (Schumm, 1977; Milliman and Syvitski, 1992; Farnsworth and Milliman,
6 2003; Milliman and Farnsworth, 2013) due to their role in the global denudation
7 cycle (Wold and Hay, 1990; Harrison, 1994), their importance to global
8 geochemical cycling (Ludwig *et al.*, 1996) and their potential role as a pathway
9 for the transport of nutrients (Walling *et al.*, 2001) and pollutants, including
10 heavy metals (Ankers *et al.*, 2003) and micro-organisms (House *et al.*, 1997).
11 SS is essential for rivers because its presence or absence determines the
12 geomorphological and biological processes that occur in these environments
13 (Wass and Leeks, 1999).

14 Attempts to quantify SS fluxes from terrestrial to marine systems face a number
15 of important problems, including the availability and reliability of data on
16 sediment loads for rivers (Walling, 2006). Despite these sources of uncertainty,
17 some authors (Holeman, 1967; Milliman and Meade, 1983; Milliman and
18 Syvitski, 1992; Ludwig and Probst, 1996 and 1998, Milliman and Farnsworth,
19 2013) have been able to estimate that each year between 15 and $19 \cdot 10^9$ t of SS
20 is delivered into the world's oceans by rivers. Recently, a global annual
21 sediment yield of $190 \text{ t} \cdot \text{km}^{-2} \cdot \text{yr}^{-1}$ was calculated by Milliman and Farnsworth
22 (2013). Nevertheless, the global distribution of SS delivery rates is not
23 homogeneous, and regional differences are considerable. In Europe, for
24 instance, whereas an annual yield of less than $10 \text{ t} \cdot \text{km}^{-2} \cdot \text{yr}^{-1}$ has been
25 calculated for northern rivers, the rivers that drain into the Mediterranean Sea

1 have annual sediment yields that are one or two orders of magnitude higher
2 (Vanmaercke *et al.*, 2011; Milliman and Farnsworth, 2013). The same can be
3 observed in Africa, where suspended sediment yields (SSY) range from less
4 than $10 \text{ t}\cdot\text{km}^{-2}\cdot\text{yr}^{-1}$ for the Senegal River basin (Kattan *et al.*, 1987) in West
5 Africa to more than $500 \text{ t}\cdot\text{km}^{-2}\cdot\text{yr}^{-1}$ in the Maghreb area (Probst and Amiotte-
6 Suchet, 1992) Vanmaercke *et al.* (2014) explained that those differences found
7 in SSY in Africa are significantly correlated to tree cover and runoff.

8 A recent review by García-Ruiz *et al.* (2013) showed that soil erosion and
9 sediment transport have been intensively studied in Spain during recent years,
10 and a total of 380 studies have been published in SCI journals. However, most
11 of these studies have focused on the Mediterranean region, and publications
12 about this topic in the Cantabrian basin are scarce. This publication record
13 reflects to the high density of SS data for the Mediterranean region of Spain,
14 and the scarcity of data for the Atlantic region (including the Bay of Biscay)
15 (Vanmaercke *et al.*, 2011). The first data on SS delivery to the Bay of Biscay
16 were published by Uriarte (1998) and Maneux *et al.* (1999). Uriarte (1998)
17 calculated that between 45 and $260 \text{ t}\cdot\text{km}^{-2}\cdot\text{yr}^{-1}$ was transported to the coastal
18 ocean from small catchments (drainage areas between 40 and 780 km^2)
19 located in Gipuzkoa (Basque Country), whereas Maneux *et al.* (1999) estimated
20 a SS yield of $70 \text{ t}\cdot\text{km}^{-2}\cdot\text{yr}^{-1}$ for the Nivelle River (238 km^2 , French Basque
21 Country). The latter highlighted the large contribution of small mountainous
22 catchments, of basins smaller than $1,000 \text{ km}^2$ in size, to the total SS that were
23 delivered to the Bay of Biscay because they transport more than the 50% of the
24 total sediments that reach the coast.

1 Indeed, the key role played by small mountainous catchments in the delivery of
2 SS to the ocean has been widely discussed (Milliman and Syvitski, 1992;
3 Syvitski and Milliman, 2007; Leithold *et al.*, 2006). Approximately 45% of the
4 total global sediment is delivered to the ocean from small catchments. However,
5 the database constructed by Vanmaercke *et al.* (2011) for European
6 catchments revealed that relatively little data on SS yield exists for small
7 catchments. Furthermore, as Milliman and Farnsworth (2013) noted, there is a
8 need to revise the estimates made for this type of catchment in global studies,
9 considering that the number of small mountainous catchments that have been
10 monitored for a relatively long period is rather small.

11 The Department of Land Planning and Environment of the Gipuzkoa Provincial
12 Council established gauging stations during the 1980s to record discharge data
13 in catchments throughout its territory. From the 2000s, suspended sediment
14 was sampled, from 2006 for rivers draining into the Bay of Biscay. The objective
15 of the present study was to estimate the SS delivery from coastal small
16 catchments (with areas smaller than 1,000 km²) to the Bay of Biscay using
17 existing high-resolution data. These data will enable the global SS yield
18 database to be extended in a barely studied area and will offer new regional
19 data that may be of interest to the scientific community working on denudation
20 rates and sediment loads to the ocean, especially from small coastal
21 catchments. Additionally, the data provide insight into environmental controls on
22 the spatial variability found in SS delivery in Atlantic coastal environments.

23

24 **2. Study area**

1 The studied catchments are located in the province of Gipuzkoa, which is in the
2 northeastern part of the Basque Country (southwestern Europe) and which has
3 an average latitude of 43° and average longitude of 1° (Figure 1). Gipuzkoa is a
4 small province covering an area of approximately 1,980 km². The altitude
5 ranges from sea level to a maximum elevation of 1,554 m, and although the
6 mountains are not very high, their slopes are steep and exceed 25% throughout
7 most of the territory, with average values between 40 and 50% for most of the
8 catchments. The region is characterised by a humid and temperate Atlantic
9 climate with 1,500 mm of annual average precipitation (the precipitation is
10 almost evenly distributed in all seasons) and a mean annual temperature of
11 13°C that varies little between winter (8–10°C, on average) and summer (18–
12 20°C, on average). A high spatial gradient is observed in annual precipitation;
13 the maximums are registered in the eastern part and decrease towards the west
14 and the south.

15 Geologically, Gipuzkoa is located at the western end of the Pyrenees; the
16 region is structurally complex and lithologically very diverse, with materials from
17 Palaeozoic plutonic rocks to Quaternary sediments (EVE, 1990). Nevertheless,
18 most of the materials in this region are sandstones, shales, limestones and
19 marls, except in the eastern part of the region, where slates are predominant
20 (Figure 1b).

21 Forest is the predominant land-use in the area, and although autochthonous
22 tree species have been promoted in recent years, pine tree plantations for
23 timber production were introduced throughout the region in previous decades.
24 With the government's promotion of afforestation policies in the second half of
25 the twentieth century (Ruiz Urrestarazu, 1999), plantations with rapidly growing

1 exotic species (primarily *Pinus radiata*) now cover 39%-48% of potential native
2 forestland on mountainsides and in areas with elevations below 700-750 m
3 ASL, respectively (Garmendia et al., 2012). *Pinus radiata* is very well adapted to
4 the humid and temperate environment of Gipuzkoa, which allows large
5 monoculture plantations to produce timber very efficiently (Michel, 2006). Forest
6 management in these plantations involves clear-cutting on rotations of 30-40
7 years along with mechanical site preparation for reforestation (i.e., scalping and
8 down-slope ripping). Exotic species do not always fit local ecosystems perfectly,
9 which can generate uneven extents of forest cover with small areas of bare soil
10 exposed to direct rainfall. In this respect, Porto *et al.* (2001) found that in
11 southern Italy, the major contribution of soil erosion could be ascribed to those
12 small areas not covered by vegetation. In contrast, *Pinus radiata* in Gipuzkoa
13 are well adapted to the environment and have been considered rapid builders of
14 forest communities (Carrascal, 1986; Ainz, 2008). Consequently, cutting and
15 site preparation are the main drivers of land disturbance and sediment
16 availability throughout the exotic tree plantations in Gipuzkoa. Additional human
17 impacts on this region include civil engineering projects, for example, the
18 construction of new highways and railways that can serve as important sources
19 of river sediment. The effect of infrastructure construction on the generation and
20 source variability of sediments has been assessed by several studies (Rijsdijk
21 *et al.*, 2007; Wu *et al.*, 2012). A more recent publication (Martínez-Santos *et al.*,
22 2015) showed the effect of highway tunnel construction on sediments in one of
23 the catchments analysed in the present paper (Deba catchment).

24

25 2.1. Catchment characteristics

1 From west to east, five rivers, the Deba, Urola, Oria, Urumea and Oiartzun,
2 drain the catchments that were analysed (Table 1). In this study, the outlet of
3 each catchment was considered to be the location of the last gauging station
4 before the river discharges into the Bay of Biscay. Considering those outlets,
5 the catchments drain a total area of 1,805 km². The annual precipitation (P in
6 mm·y⁻¹) is spatially quite variable (Figure 1a and Table 1) because more
7 precipitation is recorded in the eastern part of the province (> 2,000 mm in the
8 Urumea and Oiartzun catchments) than in the middle and the west (< 1,500 mm
9 in the Deba, Urola and Oria catchments). The total runoff (R in mm·y⁻¹), which
10 was calculated from the data recorded at the gauging stations, and the runoff
11 coefficient (Kr in %), which was estimated as the ratio between the annual
12 runoff and annual precipitation in %, show the same spatial pattern as the
13 precipitation. Differences in the drainage areas (A) for each of the catchments
14 are also important; Oria has the largest drainage area (796 km²), and Oiartzun
15 has the smallest (56 km²).

16 The average slopes (S, %) calculated for the five catchments are very high and
17 show, in general, slight differences; Urumea is the steepest catchment (Figure
18 1c and Table 1). Regarding land-use and vegetation, the Deba and Urola
19 catchments have higher percentages of exotic plantations (LW), which are
20 primarily *Pinus radiata*. Urumea has more native forests (LF), which are
21 primarily beech and oaks, and the Oria catchment has the highest percentage
22 of pasture (LP) (Table 1). Regarding land occupation, the catchments that are
23 located in the middle and western part of the study area (Deba, Urola and Oria)
24 suffer from the greatest human impact; they have larger population densities
25 (maximums of more than 1,000 inhabitants·km⁻² in contrast to the maximum of

1 150 inhabitants·km⁻² in the eastern part of Gipuzkoa) and infrastructure
2 construction pressures (primarily new motorways and high-speed railways).
3 The Urumea and Oiartzun have the smallest average regolith thickness (Z, m),
4 and Deba has the thickest regolith (Table 1). The erodibility of the lithology was
5 also considered a primary factor that may control the delivery of sediment.
6 Following the classification proposed by Probst and Amiotte-Suchet (1992),
7 which only considers rock hardness and sensitivity of lithology to mechanical
8 erosion, on the basis of the data of Chorley et al. (1984), granites and volcanic
9 rocks were considered to be lowly erodible (LE); marls, quaternary deposits and
10 lutites with gypsum were classified as highly erodible (HE); and other
11 lithologies, including sandstones, shales, limestones, slates and conglomerates,
12 were considered to be lithologies with medium erodibility (ME) (Figure 1b and
13 Table 1).

14

15 **3. Materials and Methods**

16 3.1. Data acquisition and processing

17 Since October 2006, precipitation (mm), water depth (m) and suspended
18 sediment concentration (SSC_F, mg·l⁻¹) have been measured in the field every
19 10 minutes at the gauging stations located at the outlets of each of the
20 catchments. The gauging stations are included in the official hydro-
21 meteorological network of the Basque Country. Discharge (l·s⁻¹) is estimated
22 from water depth through an exhaustive calibration conducted by the local
23 hydraulic authorities of a water pressure probe installed in crump-type gauging
24 stations (<http://www4.gipuzkoa.net/oohh/web/esp/index.asp>). In the gauging
25 station sections, direct discharge measurements are performed periodically and

1 with higher frequency during extraordinary flood events. Three polynomial
2 equations (for low, medium and high waters) relate pressure probe
3 measurements of water depth and manual measurements of discharge for each
4 station. The estimation error in discharge for those equations is between 0.1%
5 and 0.8% ($p = 0.01$) for low discharges, between 0.6% and 3.9% ($p = 0.1$) for
6 medium discharges and between 1.7% and 3.3% ($p = 0.1$) for high discharges.
7 SSC_F is measured optically using SOLITAX infrared backscattering probes (Dr.
8 Lange devices), with an expected range of 0 – 10,000 $mg \cdot l^{-1}$. Additionally,
9 automatic water samplers were also installed at the stations. The samplers
10 were programmed to start taking the first of 24 samples of 800 ml of water when
11 an increase in SSC_F above 100 $mg \cdot l^{-1}$ was detected. Time interval between
12 samples varies depending on the type of event expected in order to ensure that
13 samples are taken in the increasing and decreasing limbs of the hydrograph
14 and the sedimentograph. The samples are carried to the laboratory for physical
15 sediment concentration (SSC_L) measurements to calibrate the SSC measured
16 by the probes in the field (SSC_F). SSC_L is measured in the laboratory by
17 filtration of the samples through previously weighted 0.45- μm filters and
18 subsequent drying and weighting.

19 The calibration of SSC_F using physically measured SSC in the water samples is
20 necessary in the catchments because the linear correlations (Pearson's r)
21 between the instantaneous discharge and SSC_F in each of the five catchments
22 have been found to be rather weak ($r = 0.58$ in Deba; $r = 0.17$ in Urola; $r = 0.59$ in
23 Oria; $r = 0.39$ in Urumea; $r = 0.28$ in Oiartzun) although statistically significant at
24 the 1% due to the large amount of data involved in the analysis (more than
25 300,000 data for each river). Even in Deba and Oria, where the linear

1 correlations are stronger, a high degree of scattering exists (Figure 2). The
2 scattering may be related to the high variability in SSC with discharge
3 (hysteresis effects) due to variations in sediment availability and/or in the
4 sources of sediments during different flood events. Due to these effects,
5 sediment rating curves that relate SSC_F to discharge are not suitable for use for
6 sediment flux predictions in these catchments.

7 For that reason, to estimate SS delivery from the catchments, the relationship
8 between SSC_F (measured continuously with the probe) and SSC_L (determined
9 from the samples collected by the automatic water samplers) was used to
10 derive calibrated continuous SSC ($mg \cdot l^{-1}$) data. These relationships are site
11 specific; therefore, the relationships are typically unique for a particular
12 catchment and sometimes within a particular period of time (Gippel, 1989). Due
13 to that specificity, in this study, a particular calibration was established for each
14 catchment considering all of the events in which a threshold SSC_F value of 100
15 $mg \cdot l^{-1}$ was exceeded. SSC values higher than 100 $mg \cdot l^{-1}$ account for 5% of the
16 values in Deba, 3% of those in Urola and Oria, 0.5% of those in Urumea and
17 2% of those in Oiartzun.

18

19 3.2. SSC calibration methodology

20 The relationship between SSC_F and SSC_L was investigated using generalised
21 additive models (GAM) (Hastie and Tibshirani, 1990; Wood 2006). This type of
22 method does not require any assumption of linearity between the predictor
23 (SSC_F) and response variable (SSC_L), thus allowing the relationship between
24 predictor and outcome to be modelled more appropriately. Smooth functions
25 were estimated by means of P-spline smoothers (Eilers and Marx, 1996), which

1 the literature suggests as the most convenient estimation technique (Rice and
2 Wu, 2001). To fulfil the hypothesis of normality of the residuals, the response
3 variable was log-transformed in those data sets in which it was required, such
4 as Deba and Oria.

5

6 3.3. Suspended sediment load and its temporal variability

7 Once the calibrations and 95% confidence intervals for SSC_F were established
8 for each catchment (SSC_{L_inf} , for the lowest and SSC_{L_sup} for the highest
9 boundary), annual SS loads (in tonnes) were calculated using 10-minute SSC_F
10 measurements. For each 10-minute measurement, estimation of the SSC_L was
11 computed based on the estimated GAM model and its confidence intervals. To
12 allow full propagation of uncertainty associated with the SSC_F - SSC_L
13 relationship, the SS loads were determined considering the 95% confidence
14 interval of the estimated SSC_L . A SSC_L value was randomly selected in the 95%
15 confidence interval of each prediction of SSC_L , transformed from logarithmic to
16 real space (where necessary) and multiplied by the corresponding discharge.
17 This process was undertaken for each 10-minute interval within the selected
18 time period (event, month, hydrological year) and repeated 2,000 times for each
19 gauging station. To this end, the following equation was used (eq. 1),

$$20 \quad SS_b = \sum_{i=1}^n \widehat{SSC}_{Lib} * Q_i * time \quad (\text{eq.1})$$

21 where SSC_{Lib} is the instantaneous suspended sediment concentration randomly
22 selected in the interval (SSC_{L_inf} , . SSC_{L_sup}), Q_i is the instantaneous discharge,
23 time is the 10-minute interval over which data were recorded at the gauging
24 station, and SS_b is the estimated annual load in each $b=1, \dots, 2,000$ replicates.

25 This procedure permitted the derivation of basic statistical parameters (mean

1 and standard deviation) for SS loads, based on the distribution of the 2,000
2 replicates and the consideration of uncertainties inherent to the SSC calibration
3 curves in the estimated SS loads.

4 The maximum SSC_F value (data recorded by the field probe) accompanied by
5 an SSC_L value (data obtained in the laboratory by filtration and weighting of a
6 water sample) is exceeded less than 0.07% of the time in Deba, 0.5% of the
7 time in Urola and 0.02%, 0.007% and 0.05% of the time in Oria, Urumea and
8 Oiartzun, respectively. The SSC_L for those SSC_F values above the maximum
9 accompanied by physical data were estimated by extrapolating the trends of the
10 GAM models, with standard errors set as identical to the running mean error
11 calculated for the maximum observed SSC_F (Tarras – Wahlberg and Lane,
12 2003).

13 The reported data represent measurements taken 10-20 km upstream from the
14 river mouth. Sediment is certainly deposited downstream of the gauging
15 stations, and new sediment is possibly introduced such that the reported
16 sediment load may not represent the actual amount of sediment transported
17 towards the ocean; however, the reported sediment is an approximation of the
18 actual amount of sediment. Considering the results obtained at each gauging
19 station and the calculated area for each catchment, an approximation of the SS
20 yield from Gipuzkoa to the Bay of Biscay was also made using a weighted
21 mean.

22 Additionally, the temporal variability of SS was analysed using the $Ts_{50\%}$
23 indicator (Meybeck *et al.*, 2003), which corresponds to the percentage of time
24 necessary to carry 50% of the SS flux to the ocean. The $Ts_{80\%}$ of the
25 suspended sediment flux was also calculated as in Delmas *et al.* (2012). These

1 indicators were calculated for the entire study period using the mean of the daily
2 SS load data that had been previously obtained. The same indicators were
3 calculated for the runoff (Tw50% and Tw80%).

4

5 3.5. Environmental controls on suspended sediment yield

6 Analyses of the effect of various hydroclimatic, geomorphological and
7 lithological parameters related to the drainage basin of each of the studied
8 catchments on the mean of the SS load were undertaken. The considered
9 parameters were selected based on availability of data for the five studied
10 catchments. Besides this, it was intended to include variables that are most
11 widely reported to be related to soil erosion and sediment transport processes
12 (Ludwig and Probst, 1998; de Vente *et al.*, 2011) and show some variations in
13 the studied region. Variables related to channel morphology were not included
14 because, considering the small size of catchments, there are not important
15 morphological variations between catchments that would imply significant
16 differences in the suspended sediment yield at the multiannual time scale.
17 Parameters that were considered and the corresponding data sets are listed in
18 Table 1.

19 The hydroclimatic parameters that were included in the analyses were the mean
20 annual precipitation (P, mm), mean annual runoff (R, mm) and mean annual
21 runoff coefficient (Kr, %) for the period 2006-2013. The precipitations were
22 calculated for the entire catchment considering 48 meteorological stations for
23 the 1,805 km² of Gipuzkoa Province.

24 The other geomorphic parameters that were considered in the analyses were
25 the area of the catchment (A, km²), maximum elevation (Elev_{max}, m), mean

1 slope (S, %), the average soil depth (Z, m) and land-use as a percentage of
2 exotic plantation (LW, %), native forest (LF, %), pasture, including cultivated
3 land, (LP, %), and other uses, including urban, artificial, water bodies, bare
4 rock, (LU, %) in the catchment. In this region, cultivated land is considered
5 together with pasturelands because in Gipuzkoa the percentage of crop
6 cultivated area is very low and it is distributed in small lands that do not have
7 the environmental impact of wide agricultural areas. In fact, the main cultivated
8 areas of Gipuzkoa are exotic plantations. The erodibility of rock was also
9 considered as the percentage of the catchment with lithologies that had low
10 (LE), medium (ME) or high (HE) erodibility. All the data were derived from GIS
11 data that are freely available at the Department of Land Planning and
12 Environment of the Gipuzkoa Provincial Council (<http://urhweb.gipuzkoa.net/>)
13 and Basque Government (www.geoeuskadi.net) websites.

14 The relationships between all of the variables and the means of the SS yield
15 (SSY) and load (SSL) were assessed. First, the relations between the
16 hydroclimatic, geomorphic and lithologic parameters with SS were assessed
17 using linear correlations (Spearman correlation coefficient and its significance
18 level). Later, principal component analysis (PCA) was completed to assess the
19 main factors that control the spatial variability of the SSY in the studied region
20 and describe the relationship between all the variables. The PCA was
21 performed with a Varimax rotation to better visualise the principal components
22 (PCs). PCA was based on log-transformed data in order to normalise
23 distributions.

24

25 **4. Results**

1 4.1. SSC *versus* discharge relationships

2 Figure 2 shows SSC and the discharge data that were recorded every 10
3 minute from 2006 to 2013 for each catchment. In the studied locations, the low
4 percentage of missing values for discharge and suspended sediment
5 concentration should be noted. There are no missing discharge values for any
6 of the gauging stations, and the percentages of missing data for suspended
7 sediment concentration are 0.11% in Deba, 0.47% in Urola, 0.25% in Oria,
8 0.01% in Urumea and 0.25% in Oiartzun. Most of these data are missing during
9 high flow periods, which is when most instrument malfunctions happen.
10 However, we consider the minimal number of gaps and the length of the series
11 to provide sufficient confidence to the obtained results. In Figure 2, even if SSC
12 seems to increase with increasing discharge, a large amount of scattering in the
13 relationship between the instantaneous SSC and Q measurements can be
14 clearly observed. Such scattering may be related to variations in sediment
15 availability according to the season, hydrological characteristics and/or source
16 of different events contributing sediment. As a consequence, such variations
17 would induce hysteresis effects that could be observed in those relationships,
18 particularly during flood events between rising discharge and recession periods
19 (Williams, 1989; Lenzi and Marchi, 2000; Smith and Dragovich, 2009).
20 Additionally, Figure 2 shows the major events (concerning discharge, SSC or
21 both) registered for each site during the study period (between five and eight
22 events) using different symbols. The lack of a global relationship between SSC
23 and discharge for each river, along with different relationships between those
24 parameters for different events in each of the analysed catchments, are also
25 evident in the figure.

1 Most of the basins in Figure 2 follow a similar pattern—even if a general positive
2 relationship exists between SSC and discharge, higher maximum
3 concentrations of SS were detected in events with lower maximum discharges,
4 and there was a decrease in the maximum SSC with an increase in maximum
5 discharge. Therefore, during events with lower maximum discharges, which
6 were usually related to drier conditions (lower initial discharges), more intense
7 precipitation (between 2 and 8 mm in 10 minute of maximum precipitation
8 intensity) and higher surface runoff contribution, sediments were more
9 concentrated. However, during wetter periods when precipitation lasts longer (2-
10 3 days) and maximum discharge is higher, sediments are more diluted in water,
11 but the total sediment amounts are usually higher. Nadal-Romero *et al.* (2015)
12 found that Atlantic storms approaching from the northwest are the most
13 influential precipitation events in the study region in terms of runoff and
14 sediment yield. In Oria, this pattern was not as clearly observed, and higher
15 maximum discharges were apparently related to higher concentrations of SS.
16 This trend may be related to higher surface runoff contribution combined with a
17 higher capacity of water fluxes to transport more and/or coarser sediments.
18 For each of the events highlighted in Figure 2, the SSC registered in the rising
19 limb of the hydrograph is different from that registered in the falling limb, which
20 shows a clear hysteresis effect that has been widely observed in other
21 catchments (Kattan *et al.*, 1987; Williams, 1989; Llorens *et al.*, 1997;
22 Alexandrov *et al.*, 2003; Seeger *et al.*, 2004; Rodriguez-Blanco *et al.*, 2010). In
23 all of the catchments, clockwise hysteresis loops can be observed between
24 SSC and Q for most of the major events because the maximum concentration is
25 registered before the maximum discharge and the SSC in the rising limb of the

1 hydrograph is higher than in the falling limb. For such events, Probst (1986) and
2 Etchanchu and Probst (1986) showed that the contribution of surface runoff to
3 the total river discharge is higher during the rising period than during the falling
4 limb of the hydrograph, and during the rising period, this contribution increases
5 the mechanical erosion of the soils and the SSC in the river. Moreover, Kattan
6 *et al.* (1987) proposed that the remobilisation of bottom sediment deposited
7 after a previous event could contribute to an increase in the SSC during the
8 rising period. Williams (1989) suggested a rapid depletion of the available
9 sediment coming from a river channel before the runoff peak was reached.
10 There are some cases in which the maximum SSC is reached after the
11 discharge peak and the concentration of sediments is higher in the falling limb
12 of the hydrograph than in the rising one, which produces a counter-clockwise
13 hysteretic loop. In the studied catchments this type of loop is usually observed
14 during intense precipitation events that occur under dry soil moisture conditions.
15 This type of loop has been explained by the presence of significant sources of
16 sediment that are distant from the major runoff generation area (Williams, 1989;
17 Brasington and Richards, 2000; Seeger *et al.*, 2004).

18 Due to the high uncertainty related to the use of sediment rating curves in this
19 case, to estimate the SSC in the river and SS delivery from the studied
20 catchments, the relationship between SSC_F and SSC_L was used to derive
21 calibrated continuous SSC ($mg \cdot l^{-1}$) data for each catchment. Sixty-three events
22 in Deba, 39 in Urola, 42 in Oria, 15 in Urumea and 21 in Oiartzun were
23 analysed and included in the regressions. For the five catchments that were
24 studied, SSC_L was regressed against the corresponding SSC_F values using a

1 generalised additive model (GAM). The calibrations and their 95% confidence
2 intervals are presented in Figure 3.

3 Field-laboratory relationships (SSC_F versus SSC_L) can be adequately described
4 for the Urola, Oria, Urumea and Oiartzun gauging stations (Figure 3 b, c, d, e)
5 using unique models. The fact that regressions do not change throughout the
6 studied period indicates that the physical properties of the suspended particles
7 remain, on average, more or less constant for different events, even if there is a
8 high diversity of lithologies in the catchments. However, changes in the physical
9 characteristics (mainly size) of suspended sediments from event to event
10 cannot be discounted, considering that the adjusted models are not simple
11 linear regressions but are rather more complex models. Those changes in
12 transported sediment size influence the relationship between the optical SSC
13 measured in the field (SSC_F) and the physical SSC measured in the laboratory
14 (SSC_L) (Regües *et al.*, 2002). Finally, for the Deba catchment (Figure 3a.1 and
15 a.2), no unique relationship is observed throughout the study period. As
16 suggested by Lewis (1996), calibrations for individual events were produced,
17 and two data sets are distinguished in the graph. One of these uses most of the
18 events that occurred in the Deba River and the other runs from November 2011
19 to February 2012. This second set of samples appeared as a consequence of
20 the upstream remobilisation of a large amount of previously accumulated
21 organic matter during an extreme event in November 2011. Considering this
22 change, a different GAM model was applied for each of the studied periods in
23 Deba.

24

25 4.2. Suspended sediment delivery to the ocean.

1 Table 2 presents the annual data for precipitation (P, mm), runoff (R, mm) and
2 suspended sediments, along with the means and standard deviations (SSL, t
3 and SSY, t·km⁻²) for the studied catchments. Approximately 172,600 ± 84,641
4 t·yr⁻¹ (i.e., 63% of the suspended sediments delivered to the Bay of Biscay from
5 this region) was exported from the largest catchment, Oria (Figure 4a). The
6 Deba River was second, with almost 53,500 ± 9,824 t·yr⁻¹, or 20% of total
7 exported sediment. Together, the two largest rivers exported 83% of the
8 suspended sediments from 70% of the drained area. Urola exported
9 approximately 31,700 ± 84 t (12%) and Urumea and Oiartzun exported 10,100 ±
10 106 and 4,400 ± 20 t·yr⁻¹, respectively. Therefore, the largest rivers exported
11 more sediments than the smallest rivers. When drainage area was considered
12 and the SS yield was calculated, the Oria catchment had the highest mean SSY
13 of 217 ± 106 t·km⁻², followed by Urola, Deba, Oiartzun and Urumea, with 117 ±
14 0.31, 115 ± 21, 78 ± 0.35 and 46 ± 0.48 t·km⁻², respectively (Figure 4b). The
15 differences observed in the SSY of the five catchments are explained later in
16 this paper, when the environmental controls determining spatial variability of SS
17 delivery are identified. Based on these calculations, the total delivery of
18 sediments to the Bay of Biscay from Gipuzkoa was estimated to be
19 approximately 272,200 ± 38,106 t·yr⁻¹ (i.e., 151 ± 21 t·km⁻²·yr⁻¹) for a total
20 drainage basin area of 1,805 km².

21 In general, uncertainty in SS delivery associated to SSC_F-SSC_L relationships in
22 these five catchments is rather low (Table 2). However, the Oria catchment
23 shows a mean standard deviation (SD) at 50% of the estimated SSY. This high
24 mean uncertainty is due to the high range of values obtained in the 2,000
25 replicates for the hydrological year 2011-2012. During November of 2011, an

1 extraordinary event with high discharge and SSC_F data was registered in this
2 catchment (Figure 2c), but as can be observed in Figure 3c, a high uncertainty
3 exists in SSC_L for the upper range of SSC_F . Consequently, the SSY data
4 obtained for that event and hydrological year 2011-2012 negatively influences
5 the SD of the mean SSY for Oria.

6 The values obtained for Gipuzkoa are slightly higher than the average value
7 modelled by Ludwig and Probst (1996) for Europe ($88 \text{ t}\cdot\text{km}^{-2}\cdot\text{yr}^{-1}$) using
8 precipitation and slope as controlling factors, primarily due to the higher SSY
9 values of catchments located in the middle and west of the study region (Oria,
10 Urola and Deba). However, with the exception of the Oria catchment, these
11 values are below the global annual sediment yield of $190 \text{ t}\cdot\text{km}^{-2}\cdot\text{yr}^{-1}$ calculated
12 by Milliman and Farnsworth (2013) and the $279 \text{ t}\cdot\text{km}^{-2}\cdot\text{yr}^{-1}$ figure reported by
13 Vanmaercke *et al.* (2011) as the mean value for European catchments based
14 on data gathered from gauging stations. The values obtained in the present
15 study are on the order of the mean SS yield of $100 \text{ t}\cdot\text{km}^{-2}\cdot\text{yr}^{-1}$ estimated for
16 European catchments located in the Atlantic climatic zone by Vanmaercke *et al.*
17 However, the results of this study are quite high compared with the sediment
18 fluxes estimated by Delmás *et al.* (2012) for the French rivers that flow into the
19 Bay of Biscay, except for the case of the Urumea River. Using the IRCA
20 method, the authors calculated SS yields between 8 and $36 \text{ t km}^{-2}\cdot\text{yr}^{-1}$ for the
21 Loire, Garonne, Aquitaine and Adour and Gaves zones, which have catchments
22 that are larger ($> 10,000 \text{ km}^2$) than those analysed in the present study. Uriarte
23 (1998) derived SS yields between 20 and $260 \text{ t km}^{-2}\cdot\text{yr}^{-1}$ for the Basque
24 catchment areas using regressions of SS against river discharge for discrete or
25 daily integrated water samples. These values are higher than those estimated in

1 the present study, which are based on continuous optical measurements and a
2 higher sampling frequency. However, Milliman (2001) identified wide variations
3 in the SS regimes of European rivers, which are related to anthropogenic
4 activity and other causes.

5 SSL and SSY estimations can be strongly influenced by the range of events
6 within the measurement period (Regües *et al.*, 2000; Lenzi and Marchi, 2000;
7 Sun *et al.*, 2001; Ferro and Porto 2012). To assess the effect of events of
8 different frequency and magnitude in each of the catchments, return periods for
9 each of the sites were included in Figure 2, along with the number of events that
10 exceeded a certain return period in each catchment. Return periods of 2.33, 10,
11 25, 50, 100 and 500 years (URA, 2012) are considered in the figure.

12 In Deba, each of the nine events that exceeded the 2.33-year return period
13 (T2.33) accounted for between the 10% and 70% of the annual SS delivery of
14 that catchment for the hydrological year of occurrence. In the Urola catchment,
15 six events exceeded the 2.33-year return period, delivering between 25% and
16 55% of annual suspended sediments. In Oria, only one exceptional event was
17 responsible for 90% of the suspended sediment delivered to the ocean during
18 the hydrological year 2011-2012. This was a 25-year return period event (T25).

19 In Urumea, two events exceeded the established thresholds, with one T2.33
20 event accounting for almost 60% of SS delivery in one year and a T10 event
21 that delivered the 80% of annual SS in another. Finally, in Oiartzun, five events
22 exceeded the 2.33-year return period, two exceeded T10 and one exceeded
23 T100. Approximately 50% of the annual SS was delivered during this last event.

24 The other four events (2 T2.33 and 2 T10) were responsible for delivering
25 between 20% and 35% of annual SS.

1 These data show the importance of low frequency events for SS delivery to the
2 ocean, as they account for a high percentage of total suspended sediment
3 delivery for a single year. However, the amount of sediment delivered during
4 those extraordinary events show a wide range, especially in Deba and Urola
5 catchments, where events of the same return period (T2.33) can deliver
6 anywhere from a small percentage of annual SS to more than the half of it.
7 Conversely, in Oiartzun, events with different return periods (T2.33 and T10)
8 account for a similar percentage of the annual SS. Furthermore, catchments
9 where events with higher return periods were recorded (Oiartzun, Urumea and
10 Oria) are not necessarily those that show higher SS delivery rates. Therefore,
11 other characteristics are also responsible for the amount of SS that an event
12 can transport, which include antecedent conditions, precipitation amount and
13 intensity, duration of the event or sediment availability, among others (Old *et al.*,
14 2003; Nearing *et al.*, 2005; Seeger *et al.* 2004; Zabaleta *et al.*, 2007).

15 Table 2 also includes annual precipitation and runoff. A regional analysis of the
16 hydrology in the Gipuzkoa territory (Zabaleta, 2008), in which 22 gauging and
17 meteorological stations were analysed for more than 15 years, showed that a
18 significant difference existed in the annual runoff coefficient between the
19 catchments that are situated in the eastern part of the region and those in the
20 western part. Therefore, a progressive decrease in precipitation and its
21 productivity (in terms of runoff) from east to west was detected. Based on the
22 corresponding analysis and the data presented in Table 2, it can be observed
23 that even if higher amounts of precipitation and runoff are registered for the
24 catchments located in the east (Oiartzun and Urumea) than for the remaining
25 catchments, the eastern catchments have the lowest calculated suspended

1 sediment yield. Based on these data, one could suspect that there must be
2 other variables (that are not related to hydroclimatic variables) that are major
3 controls of SS yield on a regional scale in this area.

4 In the relationship between sediment delivery and erosion (sediment delivery
5 ratio, SDR), sediment storage is a key factor for better understanding the
6 physical processes and geomorphological evolution of the landscape. As
7 demonstrated by Walling (1983), the sediment delivery ratio decreases when
8 the drainage basin area increases. Porto *et al.* (2011) stated that the clear
9 inverse trend between catchment area and SDR found in southern Italy largely
10 reflected the increasing opportunity for sediment deposition and storage with
11 larger catchment area. For the coterminous United States, Holeman (1980)
12 calculated that only 10% of total eroded sediment reaches the ocean, and
13 Wasson *et al.* (1996) estimated that in Australia only 3% of the soil eroded in
14 the external drainage basins is delivered to the ocean. Nevertheless, in a semi-
15 arid area such as southern Morocco, Haida *et al.* (1996) showed that SDR
16 could reach 67% in the Oued Tensiff drainage basin (18,400 km²). In our case
17 study, the official erosion estimates (Basque Government, 2005) made using
18 the RUSLE equations were compared with the SSYs calculated in the present
19 paper to provide an order of magnitude estimate of the SDR (Table 3), even if
20 RUSLE is not perfectly adapted to our regional conditions. Erosion rates and,
21 consequently, derived SDRs show important differences depending on the
22 catchment. Considering the drainage basin area and relationships for different
23 regions, the SDRs obtained for Deba, Urola, Lasarte, Urumea and Oiartzun, are
24 in the range (16-59%) of those published by Walling (1983). However, they are
25 higher than those calculated for catchments of more than 1,000 km² in Australia

1 by Wasson *et al.* (1996) or for catchments between 1.47 ha and 31.61 km² in
2 southern Italy by Porto *et al.* (2011). The SDRs calculated for Deba and Oria
3 are the highest in the studied area (37%-59%). Small mountainous rivers
4 generally have small floodplains and are more susceptible to floods and it is
5 assumed that less sediment is deposited in smaller drainage basins than in
6 larger ones. However, in Gipuzkoa, the drainage basin area does not appear to
7 affect SDR because the highest SDR can be observed for the largest catchment
8 and the lowest SRD for the smallest one. In this sense, Walling (1983) and
9 deVente *et al.* (2007) emphasized the uncertainties with respect to temporal
10 and spatial aggregation of data on sediment transport, sediment yield and
11 explanatory factors such as climate, land-use and lithology. We will return to
12 this point when discussing the temporal variability indices for SS.

13 Table 2 shows the high variability of the SS loads from year to year, which is
14 much higher than the variability in the precipitation or runoff. The largest amount
15 of SS, with associated largest uncertainty, was exported from Gipuzkoa in the
16 2011-2012 hydrological year, a total of 733,500 ± 95,735 t. However, 2011-
17 2012 was not the rainiest year (the precipitation was below the mean of the
18 study period for each catchment) nor the year with the highest total runoff (even
19 if the total runoff exceeded the mean of the study period for each catchment),
20 but the runoff coefficients calculated for year 2011-2012 were quite high and
21 exceeded 60% for most of the catchments, as a consequence of an extreme
22 runoff event (Figure 2).

23

24 4.3. Temporal variability of SS delivery

1 Figure 5 clearly shows that there were extraordinarily high deliveries of SS
2 (compared with the rest of the data) during the spring of 2007 in the Urola
3 catchment and during the autumn of 2011 in the Oria catchment. The high SS
4 loads caused 2006-2007 and 2011-2012 to be the years with the highest levels
5 of SS export in Urola and Oria, respectively. In Urola, this extremely high output
6 of SS occurred when a factory located approximately 20 m upstream of the
7 measurement station began excavation to expand its area. The excavated area
8 had a volume of approximately 150,000 m³, which would account for 142,500 t
9 of material, assuming a soil density of 0.95 t·m⁻³. Therefore, the excavation
10 generated a large amount of SS that was available for transport and delivery out
11 of the catchment. The anomalous increase in SS delivery in 2006-2007 was
12 approximated using the regression between runoff (mm) and SS delivery (t·km⁻²)
13 using monthly values (R² = 0.74) for the period 2007-2013 (Figure 6a). The
14 regression between these two parameters improved from the 10-minute to
15 monthly scale because hysteresis effects did not affect their relationship on the
16 longer time scale. The regression was then applied to the runoff data observed
17 over the period 2006-2007 to obtain theoretical SS delivery values from Urola
18 under non-modified conditions (Figure 6b). The difference between the
19 observed and the theoretical SS delivery reached 235 t·km⁻², 63,500 t or 60,300
20 m³ (assuming a density of 0.95 t·m⁻³), representing 78% of the SS delivered to
21 the coastal ocean from the Urola catchment over the period 2006-2007. This
22 supplementary sediment was transported during March and April and can be
23 attributed to higher availability of SS derived from human impact in the
24 catchment, which was to a great extent due to the previously mentioned
25 excavation works. Therefore, in this case, the increase in SS cannot be

1 associated with uncertainties in the calibration of SSC data, and although the
2 SD of SSY is very low in this catchment, it was clearly provoked by human
3 activity.

4 However, in November 2011, the SS load in the Oria River was at least four
5 times higher than that of any other month (Figure 5), with a high uncertainty
6 associated to the SSC_F - SSC_L regression model. This high SS load was
7 generated as a consequence of an extreme runoff event (the highest runoff
8 registered, at least between 1999 and 2012). A lower-magnitude increase in
9 discharge and SS delivery in November 2011 can also be identified for the other
10 catchments because the strong rainfall event was regional (Figure 2).

11 Following the previously mentioned approach, a regression between the
12 monthly means of SS delivery ($t \cdot km^{-2}$) and runoff (mm) was conducted for each
13 of the five catchments to account for seasonal variations over the period 2006-
14 2013 (Figure 7). For the regressions, a confidence interval of 95% was
15 calculated. There was no significant hysteresis on the monthly time scale, and
16 the regressions that are shown are statistically significant. The data located
17 within the 95% confidence interval are considered to be related to erosion and
18 sediment transport driven by environmental factors such as land-use and
19 catchment geomorphology. In contrast, to detect possible effects on the SS
20 delivery in the analysed catchments, the data outside of the 95% interval were
21 considered to be affected by uncommon conditions such as civil engineering
22 works or extraordinary runoff events for points above the confidence interval or
23 sediment retention structures for points below the confidence interval. To
24 estimate the amount of sediment that was delivered due to those conditions, the

1 difference between the line drawn at the 95% confidence interval and the mean
2 of the estimated data was calculated.

3 In Oria and Urumea (Figure 7 c, d), the outlier data are related to the
4 extraordinary runoff event that occurred in November 2011 (Figure 2 c, d and
5 Figure 5 c, d). During that month, 250 (± 120)% more SS than that occurring
6 under normal conditions was delivered in Oria and 89 (± 3)% more was
7 delivered in Urumea, and in Oiartzun, this event accounted for an extra 29
8 (± 1)%. In Oiartzun, 80 (± 2)% and 42 (± 1)% more SS was transported in
9 September 2011 and November 2009, respectively, likely due to the high
10 discharge amounts observed there for the runoff events of September 3rd, 2011
11 and November 10th, 2009 (Figure 2e). Finally, in Deba, the outliers accounted
12 for 106 (± 34)% and 105 (± 138)% more sediment than normal conditions. In
13 general, there are few points that are not located inside the 95% confidence
14 interval, and most of them are related to runoff events in which high discharge
15 amounts were observed. Therefore, it can be concluded that in the studied
16 catchments, interannual SS delivery is not controlled by temporally and spatially
17 isolated human impacts, but that more general characteristics of the catchment,
18 such as geomorphology, land-use, general land management, are the drivers of
19 SS availability and, consequently, of SSY.

20 The daily contribution of the runoff and SS load to the total were also calculated.
21 Table 4 lists indices of the temporal variability of the discharge and sediment for
22 the five catchments. The results show that a large proportion of the total
23 observed runoff and suspended sediment were transported within a short
24 period. The temporal variability in the runoff was not significantly different
25 between the catchments, with 50% of annual water volume exported over 10%-

1 16% (1-2 months) of the year ($T_{w50\%}$) and 80% exported over 35%-45% (4-5.5
2 months) of the year ($T_{w80\%}$), depending on the catchment. These data
3 demonstrate the high variability of water height in these catchments and how
4 little the catchments are regulated because high values of $T_{w50\%}$ ($>30\%$) are
5 typically observed in highly regulated or lake-influenced rivers (Meybeck *et al.*,
6 2003).

7 The duration for the SS load was much shorter than that for the water flow. Half
8 of the SS load ($T_{s50\%}$) was delivered between 0.3% (1 day) and 1% (3-4 days)
9 of the time, and 80% of the sediment was exported between 2.5% (9 days) and
10 8% (<30 days) of the time. Similar data were obtained by Zabaleta and
11 Antiguada (2012) for three small headwater catchments (3.8, 4.8 and 48 km²)
12 in the same area. This contradicts the findings of some authors who show that,
13 sometimes, small events, over long periods, are more responsible than large
14 events to for sediment export (Ferro and Porto, 2012). Following the
15 characterisation of the duration patterns reported by Meybeck *et al.* (2003),
16 these patterns suggest that the studied catchments show very short sediment
17 flux durations due to small catchment size and scarcity of areas where sediment
18 could be temporally retained (i.e., floodplains). These results are consistent with
19 the relatively high SDR obtained (Table 3). However, regarding their
20 relationship with catchment area some contradictions can be found since a
21 higher SDR (59%) was estimated for the largest catchments (Oria, 796.5 km²)
22 than for the smallest ones (16%, Oiartzun, 56.6 km²), from which one could
23 conclude that higher amounts of sediment are being deposited in smaller
24 catchments. The contradiction found could be related to the relatively short
25 period of time involved in SSY estimates (seven years). Nevertheless, the

1 catchments with lower SDRs are those with higher RUSLE estimates as well as
2 the steepest slopes and thinner soils. The steepness of those catchments could
3 be related to an overestimation of erosion rates using RUSLE. In any case, the
4 validity of the RUSLE equation in an environment such as that examined in this
5 study can, at least, be discussed.

6 The duration pattern is also slightly different for SS transport (for some days)
7 and water flow (for some months). Indeed, the Urumea catchment had a higher
8 flow duration ($T_{w50\%} = 16.3\%$ of the time) but lower SS load duration ($T_{s50\%} =$
9 0.29% of the time). Conversely, Urola, with a similar catchment area, had a
10 lower flow duration ($T_{w50\%} = 12.4\%$ of the time) but higher SS load duration
11 ($T_{s50\%} = 1.02\%$ of the time). The differences may be related to sediment
12 availability. In those catchments where SS transport is limited by its availability,
13 the duration for SS would be lower than in those catchments where the
14 availability of SS was not as limited.

15 These results support the idea that hydroclimatic variables are not the main
16 factors that control the spatial variability of the delivery of SS in this area; there
17 must be other, distinct environmental parameters that affect SS availability.
18 Various studies have indicated that factors including topography/morphology
19 (Pinet and Souriau, 1988; Milliman and Syvitski, 1992; Ludwig and Probst 1996;
20 Montgomery and Brandon, 2002), lithology (Probst and Amiotte-Suchet, 1992;
21 Ludwig and Probst, 1998; Nadal-Romero *et al.*, 2011), land-use (Walling, 2006;
22 Lana-Renault *et al.*, 2010) and human activities (Olarieta *et al.*, 1999; Siakeu *et*
23 *al.*, 2004; Evans *et al.*, 2006) may significantly affect SS yield and its variability.

24

25 4.4. Environmental controls on SS delivery

1 To explore which factors control SS availability in the studied catchments and,
2 consequently, SS delivery to the Bay of Biscay, Spearman correlation
3 coefficients were calculated for all of the possible variable pairs shown in Table
4 1 (Table 5). Many studies that have examined global SS yields have shown that
5 hydroclimatic variables largely explain the amount of regional variations in SSY.
6 However, contrary to what could be expected, in this area a negative
7 relationship, although statistically not significant, exists between annual
8 precipitation and SSY or SSL and between runoff and SSY or SSL. Taking into
9 consideration the high variability in the hydroclimatic variables in the region, this
10 fact mainly indicates that precipitation or runoff do not limit SS delivery, and
11 other factors exert stronger control on SS delivery (Vanmaercke *et al.*, 2011).
12 There should therefore be physical characteristics of the catchments that limit
13 sediment availability and thus control SS delivery to the ocean. The amount of
14 SS delivered by a river to the ocean is clearly related to the amount of the SS
15 that is produced and to depositional processes that occur within the river's
16 drainage basin. Usually, there is an increase in the relative importance of
17 depositional processes with an increase in catchment area (Walling, 1983;
18 Hovius, 1998), which is reflected in the inverse relationship between SSY and
19 catchment area shown in several regional and global studies (Milliman and
20 Meade, 1983; Probst and Amiotte-Suchet, 1992; Milliman and Farnsworth,
21 2013). However, in contrast to those results, there is a positive relationship
22 between SSY and catchment area ($r= 0.8$) in the studied area (Table 5). In fact,
23 below a certain catchment area threshold (which is determined by local
24 conditions), an increase in SSY is expected with increasing catchment area
25 because additional erosion processes such as gully erosion, bank erosion and

1 mass movement become possible (deVente and Poesen, 2005). At the same
2 time, the storage of sediment in the drainage network is not as important in
3 small catchments (Dunne, 1979), which is the case for the studied catchments
4 that have steep slopes and limited floodplains where sediments could be stored
5 (in contrast to what could be deduced from the calculated SDR data). Thus, as
6 Restrepo *et al.* (2006) concluded for the sub-catchments in the Magdalena river
7 basin (Colombia), it is likely that catchment area, with a limited variation from
8 56.6 to 796.5 km², does not have an important effect on the spatial variability of
9 SSY in this area.

10 Human impact and land-use management have been reported to be
11 responsible for increases in the SS delivery in some catchments (see Walling
12 and Probst, 1997; Walling, 2006). In this area, land-use also appears to play a
13 role in SS availability and delivery. SSY shows a negative correlation with the
14 percentage of native forest ($r=-0.6$) (LF% in Table 5) and a positive correlation
15 with the percentage of pasture ($r=0.7$). Native forests are likely more favourable
16 for soil conservation in the studied area because native forests are typically
17 public forests intended for ecosystem conservation and not the production of
18 timber. In contrast, the management of plantations of exotic species (LW% in
19 Table 5) leads to land disturbance and an increase in soil erosion and sediment
20 availability, as reported by Olarieta *et al.* (1999) for this region. Recently, Borrelli
21 and Schütt (2014) also reported an increase in soil erosion susceptibility after
22 forest harvesting in central Italy. SSY also shows a positive correlation with the
23 percentage of highly erodible lithologies ($r=0.9$).

24 The PCA results based on a correlation matrix analysis with Varimax rotation
25 indicate that there are three main principal components (PCs) that explain a

1 cumulative variance greater than 98%. The loads for the variables that were
2 considered in the PCs from the PCA are presented in Table 6. The table shows
3 that the variables weighted more highly for PC1 (load > 0.7) (which explains
4 50% of the total variance of the data matrix) are, SSL, A, LW (exotic plantation
5 %) and Z (regolith depth) on the positive axis and P (precipitation), R (runoff), Kr
6 (runoff coefficient) and LF (native forest %) on the negative axis. PC2 (which
7 explains 26% of the total variance) shows a load greater than 0.7 for LU (other
8 land-use %), and HE (high erodibility) on the positive axis and LF (native forest
9 percentage), S (slope) and ME (medium erodibility) on the negative axis. PC3
10 (22% of the total variance) is characterised by SSY and LP (percentage of
11 pasture) on the positive axis and maximum elevation ($Elev_{max}$) and LE (low
12 erodibility) on the negative axis.

13 The factorial plane PC1 vs. PC2 (Figure 8) shows that SSY and SSL are
14 positively affected by the percentage of exotic plantations (LW) and regolith
15 depth (Z); those factors are located in the right part of the figure, whereas the
16 percentage of native forest (LF) is located in the left half, which implies that
17 native forest cover may reduce SS availability and delivery. The locations of the
18 studied catchments in the factorial plane (Figure 8, bottom right) show that the
19 Urola and Oria catchments and especially the Deba catchment are the most
20 affected by the previously mentioned variables, with a high percentage of exotic
21 forest and a significant regolith depth. The relationship between SSY and soil
22 depth is not very intuitive, however, a deeper regolith would mean a higher
23 amount of soil to be eroded and delivered in the form of sediment. Having said
24 that, it cannot be discarded the effect of collinearity, due to the positive
25 correlation of soil depth with exotic plantations and of these lasts with SSY.

1 These variables, in conjunction with the higher human impact (human density
2 and infrastructure construction) of those catchments, provide suspended
3 sediments that can be transported by the rivers. As a consequence, the SSY
4 and SSL calculated for these catchments were higher. In contrast, Urumea and
5 Oiartzun are located in the left half of the factorial plane, which is characterised
6 by a higher percentage of native forest, lower human impact and, as a result,
7 lower SSY and SSL, especially in Urumea.

8 The hydroclimatic variables (P, R and Kr) show relationships with SS that are
9 contrary to the expected relationships, as concluded from the correlation matrix.
10 This result is observed because, in this region, hydroclimatic factors do not limit
11 SS transport and delivery, and there are other factors (including land-use and
12 geomorphic factors) that control the spatial differences in the availability of SS
13 and therefore SSY and SSL.

14

15 **5. Conclusions**

16 Knowledge of sediment yield from small catchments is very important in gaining
17 a wider overview of SS delivery to coastal oceans and for regional studies. In
18 addition, there is a significant lack of data on SS delivery to the ocean and its
19 environmental controls in the Atlantic region of southern Europe. In this study,
20 the data regarding SS delivery from the Gipuzkoa province to the Bay of Biscay
21 were calculated using high temporal resolution data (discharge and SSC) from
22 five gauging stations. The uncertainty inherent to SSC calibration models was
23 considered in the transformation of SSC data into SS yield estimates. The
24 followed approach provided a more confident comparison of SSY data from
25 different catchments. For catchments with areas ranging from 56.6 km² to 796.5

1 km², the SS delivery varied from approximately 4,400 ± 20 to 17,2600 ± 84,641
2 t·yr⁻¹, and the suspended sediment yield (SSY) ranged from 46 ± 0.48 to 217 ±
3 106 t·km⁻²·yr⁻¹.

4 The temporality of sediment delivery is important at interannual and seasonal
5 scales because of environmental and, more particularly, meteorological
6 variability. To add confusion, human influences on sediment erosion and
7 delivery through civil engineering works cannot be minimised. This variability
8 reinforces the argument that long-term, high-resolution observation programs
9 are required both to gain a better understanding of the factors and processes
10 that control the physical erosion of soils and fluvial sediment transport and to
11 obtain reliable approximations of SS deliveries to the ocean. The database used
12 in this study captures a wide range of meteorological situations, including very
13 wet years such as 2012-2013 and extraordinary events such as those that
14 occurred on the 5th and 6th of November, 2011. Anthropogenic impacts,
15 including the excavation works undertaken in the Urola River basin, were also
16 considered within the studied period. However, obtaining longer-term
17 measurements will allow the detection of effects from other meteorological-,
18 environmental- and human-induced changes on SS availability.

19 In this study, various hydroclimatic and environmental catchment characteristics
20 were analysed to explain the spatial variability of SS delivery in this area. The
21 hydroclimatic variables did not produce the expected effect on SS delivery
22 because they were inversely related to SSY, contrary to effects that have been
23 observed in different regions of the world and on a global scale. Thus, in the
24 study area, precipitation and runoff are not considered to be key limiters of SS
25 delivery, and other environmental factors related to sediment availability must

1 be controlling the spatial variability of SS delivery to the ocean. The direct
2 relationships between SSY and catchment area were also contrary to what is
3 usually found, likely because of the small range of catchment area and the
4 steep relief of the region, which together with the scarcity of floodplains produce
5 a lack of space where sediment can be deposited.

6 Based on the current analyses, the potential controlling factors of SS availability
7 and SSY in the study region were determined. The major factors that affect
8 suspended sediment availability, and hence SSY, were determined to be land-
9 use and, in particular, vegetation (exotic plantations vs. native forest) and
10 regolith depth.

11 These findings confirm those reported in earlier studies that analyse the often
12 complex relationship between SS, hydroclimatic factors, spatial scale and other
13 environmental characteristics. Strong relationships between SSY and one or
14 more catchment characteristics can be found locally. However, these relations
15 can hardly be generalised because the sediment fluxes of a catchment are the
16 integrated effect of a series of tectonic, climatic and geomorphic processes
17 (Hovius and Leeder, 1998). Nonetheless, the SSYs and controlling factors
18 discussed in this paper help address the paucity of information on SS delivery in
19 the Atlantic area and can provide valuable quantitative information for
20 stakeholders to make more informed decisions on land-use management by
21 taking into consideration the effects of soil erosion and river suspended
22 sediment transport.

23

24 **ACKNOWLEDGEMENTS**

1 This work was supported by the Department of Land Planning and Environment
2 of the Gipuzkoa Provincial Council (Basque Country), the University of the
3 Basque Country (UFI 11/26), the Basque Government (Consolidated Groups IT
4 598-13 and IT620-13), the Spanish Ministry of Science and Innovation
5 (CGL2011-26236) and the Spanish Ministry of Economy and Competitiveness
6 (CAUSE project, CTM2012-39500).

7

1 REFERENCES

- 2 Ainz MJ. 2008. The monoculture of radiata pine in the Basque Country: origin
3 and keys of the survival of a system of exploitation in opposite with sustainable
4 development. *Estudios Geográficos* 265: 335-356. doi: 10.3989/estgeogr.0426
- 5 Alexandrov Y, Laronne JB, Reid I. 2003. Suspended sediment concentration
6 and its variation with water discharge in a dryland ephemeral channel, northern
7 Negev, Israel. *Journal of Arid Environments* 53: 73-84.
- 8 Ankers C, Walling DE, Smith RP. 2003. The influence of catchment
9 characteristics on suspended sediment properties. *Hidrobiología* 494: 159-167.
- 10 Basque Government. 2005. Mapa de erosión de suelos de la Comunidad
11 Autónoma de Euskadi. 191pp.(In:[http://www.geo.euskadi.net/s69-
12 geodir/es/contenidos/ds_geograficos/erosion/es_opendata/adjuntos/memoria.p
13 df](http://www.geo.euskadi.net/s69-geodir/es/contenidos/ds_geograficos/erosion/es_opendata/adjuntos/memoria.pdf)) Last accessed: 12/1/2015.
- 14 Brasington J, Richards K. 2000. Turbidity and suspended sediment dynamics in
15 small catchments in the Nepal Middle Hills. *Hydrological Processes* 14: 2559-
16 2574.
- 17 Borrelli P, Schütt B. 2014. Assessment of soil erosion sensitivity and post-
18 timber-harvesting erosion response in a mountain environment of Central Italy.
19 *Geomorphology* 204: 412-424.
- 20 Delmas M, Cerdan O, Cheviron B, Mouchel JM, Eyrolle F. 2012. Sediment
21 export from French rivers to the sea. *Earth Surface Processes and Landforms*
22 37: 754-762.
- 23 de Vente J, Poesen J, Arabkhedri M and Verstraeten G. 2007. The sediment
24 delivery problem revisited. *Progress in Physical Geography* 31(2):155-178.

1 Carrascal M. 1986. Estructura de las comunidades de aves de las
2 repoblaciones de *Pinus radiata* del País Vasco. *Munibe (Ciencias Naturales)*
3 38: 3-8.

4 Chorley RJ, Schumm SA, Sugden DE. 1984. *Geomorphology*. Methuen, New
5 York, USA.

6 De Vente J, Poesen J. 2005. Predicting soil erosion and sediment yield at the
7 basin scale: Scale issues and semiquantitative models. *Earth Science Reviews*
8 71: 95-125.

9 Dunne T. 1979. Sediment yield and land use in tropical catchments. *Journal of*
10 *Hydrology* 42: 281-300.

11 Eilers P. H. C., Marx B. D. 1996. Flexible smoothing with B-splines and
12 penalties. *Statistical Science* 1: 89-121.

13 Evans DJ, Gibson CE, Rossell RS. 2006. Sediment loads and sources in
14 heavily modified Irish catchments: A move towards informed management
15 strategies. *Geomorphology* 79: 93–113.

16 EVE (BasqueEnergy Agency). 1990. Mapa geológico simplificado del País
17 Vasco. Escala 1:40000.

18 Etchanchu D, Probst JL. 1986. Erosion and suspended sediment transport in an
19 agricultural basin. Method of measurement of the surface runoff, of its
20 suspended load and of the two components of the particulate transport in river.
21 *Comptes Rendus Académie des Sciences Paris* 302 (II, 17): 1063-1068.

22 Farnsworth KL, Milliman JD. 2003. Effects of climatic and anthropogenic
23 change on small mountainous rivers: the Salinas River example. *Global and*
24 *Planetary change* 39: 53-64.

1 Ferro V, Porto P. 2012. Identifying a dominant discharge for natural rivers in
2 southern Italy. *Geomorphology* 139-140: 313-321.

3 García-Ruiz JM, Nadal-Romero E, Lana-Renault N, Beguería S. 2013. Erosion
4 in Mediterranean landscapes: Changes and future challenges. *Geomorphology*
5 198: 20-36.

6 Garmendia E, Mariel P, Tamayo I, Aizpuru I, Zabaleta A. 2012. Assessing the
7 effect of alternative land uses in the provision of water resources: Evidence and
8 policy implications from southern Europe. *Land Use Policy* 29 (4): 761-770.
9 <http://dx.doi.org/10.1016/j.landusepol.2011.12.001>.

10 Gippel CJ. 1989. The use of turbidimeters in suspended sediment research.
11 *Hydrobiologia* 176/177: 465-480.

12 González-Hidalgo JC, Batalla RJ, Cerdá A, De Luis M. 2009. Contribution of the
13 largest events to suspended sediment transport across the USA. *Land
14 Degradation and Development* 21: 83-91.

15 Haida S, Snoussi M, Latouche C, Probst JL. 1996. Present geodynamic of the
16 Tensift drainage basin (Morocco): mechanical erosion and fluvial transports of
17 sediments. *Sciences Geol. Bull.* 49 (1-4): 7-23.

18 Harrison, CG. 1994. Rates of continental erosion and mountain building.
19 *Geologische Rundschau* 83: 431–447.

20 Hastie T., Tibshirani R. 1990. *Generalized Additive Models*. London: Chapman
21 & Hall.

22 Holeman JN. 1967. The sediment yield of major rivers of the World. *Water
23 Resources Research* 4 (4): 737-747.

24 Holeman JN. 1980. Erosion rates in the US estimated by the Soil Conservation
25 Service's inventory. *EOS* 61: 954.

1 House WA, Leach D, Long JLA, Cranwell P, Bharwaj L, Meharg A, Ryland G,
2 Orr DO, Wright J. 1997. Micro-organic compounds in the Humber rivers.
3 *Science of the Total Environment* 194/195: 357-373.

4 Hovius N. 1998. Controls on sediment supply by large rivers, Relative Role of
5 Eustasy, Climate, and Tectonism in Continental Rocks. *Society of Sedimentary
6 Geology Special Publication No. 59*: 3-16.

7 Hovius N, Leeder M. 1998. Clastic sediment supply to basins. *Basin Research*
8 10: 1-5.

9 Kattan Z, Gac JY, Probst JL. 1987. Suspended sediment load and mechanical
10 erosion in the Senegal basin. Estimation of the surface runoff concentration and
11 relative contributions of channel and slope erosion. *Journal of Hydrology* 92: 59-
12 76.

13 Knighton D. 1998. *Fluvial forms and processes: a new perspective*. Arnold:
14 London. 386 p.

15 Lana-Renault N, Nadal-Romero E, Serrano-Muela P, Latron J, Regüés D,
16 García-Ruiz JM, Martí-Bono C. 2010. Seasonal dynamics of streamflow and
17 sediment transport in three research basins with different land cover. *IAHS-
18 AISH Publication 336*: 173-178.

19 Leithold EL, Blair NE, Perkey DW. 2006. Geomorphic controls on the age of
20 particulate organic carbon from small mountainous and upland rivers. *Global
21 Biogeochemical Cycles* 20, GB3022, doi:10.1029/2005GB002677.

22 Lenzi MA, Marchi L. 2000. Suspended sediment load during floods in a small
23 stream of the Dolomites (northeastern Italy). *Catena* 39: 267-282.

24 Lewis J. 1996. Turbidity-controlled suspended sediment sampling for runoff-
25 event load estimation. *Water Resources Research* 32 (7): 2299-2310.

1 Llorens P, Queralt I, Plana F, Gallart F. 1997. Studying solute and particulate
2 sediment transfer in a small mediterranean mountainous catchment subject to
3 land abandonment. *Earth Surface Processes and Landforms* 22: 1027-1035.

4 Ludwig W, Probst JL, Kempe S. 1996. Predicting the oceanic input of organic
5 carbon by continental erosion. *Global Biogeochemical Cycles* 10: 23–41.

6 Ludwig W, Probst JL. 1996. A global modelling of the climatic, morphological
7 and lithological control of river sediment discharges to the oceans. *IAHS*
8 *Publication* 236: 21-28.

9 Ludwig W, Probst JL. 1998. River sediment discharge to the oceans: present
10 day controls and global budgets. *American Journal of Science* 298: 265-295.

11 Maneux E, Dumas J, Clément O, Etcheber H, Charritton X, Etchart J, Veysy E,
12 Rimmelin P. 1999. Assessment of suspended matter input into the oceans by
13 small mountainous coastal rivers: the case of the Bay of Biscay. *Earth and*
14 *Planetary Sciences* 329: 413-420.

15 Martínez-Santos M, Probst A, García-García J, Ruiz-Romera E. 2015. Influence
16 of anthropogenic inputs and a high-magnitude flood event on metal
17 contamination pattern in surface bottom sediments from the Deba River urban
18 catchment. *Science of The Total Environment* 514: 10-25.

19 Meybeck M, Laroche L, Dürr HH, Syvitski JPM. 2003. Global variability of total
20 suspended solids and their fluxes in rivers. *Global and Planetary Change* 39:
21 65-93.

22 Michel M. 2006. El Pino radiata en la Historia Forestal Vasca : Análisis de un
23 proceso de forestalismo intensivo. *Munibe (Suplemento)* 23, 247p. ISSN 1698-
24 3807.

1 Milliman JD. 2001. Delivery and fate of fluvial water and sediment to the sea: a
2 marine geologist's view of European rivers. *Scientia Marina* 65 (S2) : 121-132.

3 Milliman JD, Meade RH. 1983. World wide delivery of river sediment to oceans.
4 *Journal of Geology* 91: 1-21.

5 Milliman JD, Syvitski JPM. 1992. Geomorphic/tectonic control of sediment
6 discharge to the ocean: the importance of small mountainous rivers. *Journal of*
7 *Geology* 100: 525-544.

8 Milliman JD, Farnsworth KL. 2013. *River Discharge to the Coastal Ocean. A*
9 *Global Synthesis*. Cambridge University Press. New York.

10 Montgomery DR, Brandon MT. 2002. Topographic controls on erosion rates in
11 tectonically active mountain ranges. *Earth and Planetary Science Letters* 201:
12 481-489.

13 Nadal-Romero E, Martínez-Murillo JF, Vanmaercke M, Poesen J. 2011. Scale-
14 dependency of sediment yield from badland areas in Mediterranean
15 environments. *Progress in Physical Geography* 35 (3) : 297-332.

16 Nadal-Romero E, González-Hidalgo JC, Cortesi N, Desir G, Gómez JA,
17 Lasanta T, Lucía A, Marín C, Martínez-Murillo JF, Pacheco E, Rodríguez-
18 Blanco ML, Romero Díaz A, Ruiz-Sinoga JD, Taguas EV, Taboada-Castro MM,
19 Taboada-Castro MT, Úbeda X, Zabaleta A. 2015. Relationship of runoff, erosion
20 and sediment yield to weather types in the Iberian Peninsula. *Geomorphology*
21 228: 372-381.

22 Nearing MA, Jetten V, Baffaut C, Cerdana O, Couturier A, Hernandez M, Le
23 Bissonnais Y, Nichols MH, Nunes JP, Renschler CS, Souchère V, van Oost K.
24 2005. Modeling response of soil erosion and runoff to changes in precipitation
25 and cover. *Catena* 61: 131-154.

1 Olarieta JR, Besga G, Rodríguez R, Usón A, Pinto M, Virgel S. 1999. Sediment
2 enrichment ratios after mechanical site preparation for pinus radiata plantation
3 in the Basque Country. *Geoderma* 93: 255-267.

4 Old GH, Leeks GJL, Packman JC, Smith BPG, Lewis S, Hewitt EJ, Holmes M,
5 Young A. 2003. The impact of a convectional summer rainfall event on river flow
6 and fine sediment transport in a highly urbanized catchment: Bradford, West
7 Yorkshire. *The Science of the Total Environment* 314-316: 495-512.

8 Pinet P, Souriau M. 1988. Continental erosion and large scale reliefs. *Tectonics*
9 7: 563-582.

10 Porto P, Walling DE, Callegari G. 2011. Using ¹³⁷Cs measurements to
11 establish catchment sediment budgets and explore scale effects. *Hydrological*
12 *Processes* 25: 886–900.

13 Probst JL. 1986. Dissolved and suspended matter transported by the Girou river
14 (France): mechanical and chemical erosion rates in a calcareous molasses
15 basin. *Hydrological Sciences Journal* 31 : 61-79.

16 Probst JL, Amiotte Suchet P. 1992. Fluvial suspended sediment transport and
17 mechanical erosion in the Maghreb (North Africa). *Hydrological Sciences*
18 *Journal* 37(6) :621-637.

19 Regües D, Balasch JC, Castelltort X, Soler M, Gallart F. 2000. Relación entre
20 las tendencias temporales de producción y transporte de sedimentos y las
21 condiciones climáticas en una pequeña cuenca de montaña mediterránea
22 (Vallcebre, Pirineos Orientales). *Cuadernos de Investigación Geográfica* 26: 41-
23 65.

24 Regüés D, Soler M, Gallart F. 2002. Influencia del tamaño de las partículas
25 sobre la estimación de concentraciones de sedimento en suspensión mediante

1 turbidímetros de retro-dispersión. In: Serrano, E., García de Celis, A., Guerra,
2 J.C., Morales, C.G., Ortega, M.T. (Eds.), Estudios Recientes (2000–2002) en
3 Geomorfología. Patrimonio, Montaña y Dinámica Territorial. Universidad de
4 Valladolid, Sociedad Española de Geomorfología, pp. 239–252.

5 Restrepo JD, Kjerfve B, Hermelin M, RestrepoJC. 2006. Factors controlling
6 sediment yield in a major South American drainage basin: the Magdalena River,
7 Colombia. *Journal of Hydrology* 316: 213-232.

8 Rice J. A., Wu C. O. 2001. Nonparametric mixed effects models for unequally
9 sample noisy curves. *Biometrics* 57: 253-259.

10 Rijdsijk A, Bruijnzeel LA, Sutoto C. 2007. Runoff and sediment yield from rural
11 roads, trails and settlements in the upper Konto catchment, East Java,
12 Indonesia. *Geomorphology* 87: 28–37.

13 Rodríguez-Blanco ML, Taboada-Castro MM, Taboada-Castro MT. 2010.
14 Factors controlling hydro-sedimentary response during runoff events in a rural
15 catchment in the humid Spanish zone. *Catena* 82: 206-217.

16 Ruiz Urrestarazu E. 1999. Adaptación y gestión de las medidas
17 agroambientales y de forestación en el País Vasco. in Corbera, M. (Ed.)
18 Cambios en los espacios rurales cantábricos tras la integración de España en
19 la UE. Santander, Universidad de Cantabria.

20 Schumm SA. 1977. *The fluvial system*. Wiley Interscience, 338 p, New York.

21 Seeger M, Errea MP, Beguería S, Arnáez J, Martí C, García-Ruiz JM. 2004.
22 Catchment soil moisture and rainfall characteristics as determinant factors for
23 discharge/suspended sediment hysteretic loops in a small headwater catchment
24 in the Spanish Pyrenees. *Journal of Hydrology* 288:299-311.

1 Siakeu J, Oguchi T, Aoki T, Esaki Y, Jarvie HP. 2004. Change in riverine
2 suspended sediment concentration in central Japan in response to late 20th
3 century human activities. *Catena* 55:231–254.

4 Smith HG, Dragovich D. 2009. Interpretation of sediment delivery processes
5 using suspended sediment-discharge hysteresis patterns from nested upland
6 catchments, south-eastern Australia. *Hydrological Processes* 23: 2415-2426.

7 Sun H, Cornish PS, Daniell TM. 2001. Turbidity-based erosion estimation in a
8 catchment in South Australia. *Journal of Hydrology* 253: 227-238.

9 Syvitski JPM, Milliman JD. 2007. Geology, Geography, and humans battle for
10 dominance over the delivery of fluvial sediment to the coastal ocean. *Journal of*
11 *Geology* 115:1-19.

12 Tarras-Wahlberg N.H., Lane S.N. 2003. Suspended sediment yield and metal
13 contamination in a river catchment affected by El Niño events and gold mining
14 activities: the Puyango river basin, southern Ecuador. *Hydrological Processes*
15 17: 3101-3123.

16 Uriarte A. 1998. Sediment dynamics on the inner continental shelf of the
17 Basque Country (N. Spain). Department of Oceanography. Sciences Faculty.
18 University of Southampton. PhD Thesis. 302p.

19 Vanmaercke M, Poesen J, Verstraeten G, De Vente J, Ocakoglu F. 2011.
20 Sediment yield in Europe: spatial patterns and scale dependency.
21 *Geomorphology* 130:142–161.

22 Vanmaercke M, Poesen J, Broeckx J and Nyssen J. 2014. Sediment yield in
23 Africa. *Earth-Science Reviews* 136(0):350-368.

24 Walling DE. 1983. The sediment delivery problem. *Journal of Hydrology* 65:209-
25 237.

- 1 Walling DE. 2006. Human impact on land–ocean sediment transfer by the
2 world's rivers. *Geomorphology* 79:192–216
- 3 Walling DE, Probst JL. 1997. Human impact on erosion and sedimentation.
4 IAHS Publication 245, IAHS Press, 311 pp
- 5 Walling DE, Russell MA, Webb BW. 2001. Controls on the nutrient content of
6 suspended sediment transported by British Rivers. *Science of the Total*
7 *Environment* 266:113-123.
- 8 Wass PD, Leeks JL. 1999. Suspended sediment fluxes in the Humber
9 catchment, UK. *Hydrological Processes* 13:935-953.
- 10 Wasson RJ, Olive LL, Rosewall CJ. 1996. Rates of erosion and sediment
11 transport in Australia. IAHS publ. 236 : 139-148.
- 12 Williams GP. 1989. Sediment concentration versus water discharge during
13 single hydrologic events in rivers. *Journal of Hydrology* 111 : 89-106.
- 14 Wold CN, Hay WW. 1990. Estimating ancient sediment fluxes. *American*
15 *Journal of Science* 290:1069-1089.
- 16 Wood S. N. 2006. *Generalized Additive Models: An Introduction with R*. Boca
17 Raton, FL: Chapman & Hall/CRC.
- 18 Wu CS, Yang SL, Lei Y-P. 2012. Quantifying the anthropogenic and climatic
19 impacts on water discharge and sediment load in the Pearl River (Zhujiang),
20 China (1954–2009). *Journal of Hydrology* 452–453: 190–204.
- 21 Zabaleta A. 2008. Análisis de la respuesta hidrosedimentaria en pequeñas
22 cuencas de Gipuzkoa. PhD Thesis. University of the Basque Country
23 UPV/EHU. Geodynamics Department 252 pp., annexes and CD.

- 1 Zabaleta A, Martínez M, Uriarte JA, Antiguada I. 2007. Factors controlling
- 2 suspended sediment yield during runoff events in small headwater catchments
- 3 of the Basque Country. *Catena* 71:179-190.
- 4 Zabaleta A, Antiguada I. 2012. Temporal variations of suspended sediment
- 5 transport in three small catchments of the Basque Country. *Zeitschrift für*
- 6 *Geomorphologie* 56 (S3): 081-098.
- 7 <http://urhweb.gipuzkoa.net>. Last accessed: 12/1/2015.
- 8 www.geoeuskadi.net. Last accessed: 12/1/2015.
- 9

1 Table 1. Names of the gauging stations where discharge and SSC data for this
 2 research work were recorded. Annual mean precipitation (P), runoff (R) and
 3 runoff coefficient (Kr) for the period 2006-2013 in the studied catchments. Area
 4 (A), maximum elevation (Elev_{max}), mean slope (S), land use (LW = exotic
 5 plantation, LF = native forest, LP = pasture, LU = others), mean soil depth (Z)
 6 and erodibility of lithology (LE = low erodibility, ME =medium erodibility, HE =
 7 high erodibility) for those catchments were also included. Source of data:
 8 (<http://urhweb.gipuzkoa.net/>).

Parameter	Catchment					
	Deba	Urola	Oria	Urumea	Oiartzun	
Gauging st.	Altzola	Aizarnazabal	Lasarte	Ereñozu	Oiartzun	
P (mm)	1358	1453	1497	2071	1942	
R (mm)	709	794	858	1251	1303	
Kr (%)	52	55	57	60	67	
A (km ²)	464.25	269.77	796.5	218.42	56.6	
Elev _{max} (m)	986	829	647	950	828	
S (%)	44	47	44	56	42	
Land use	LW (%)	38.53	36.67	25.22	25.93	26.34
	LF (%)	26.1	31.48	34.46	50.46	37.05
	LP (%)	14.95	21.11	30.34	15.74	20.98
	LU (%)	10.1	10.74	5.74	0	15.62
Z (m)	1.5	1.2	1.1	0.9	0.9	
Erodibility of lithology	LE (%)	8	6	1	4	22
	ME (%)	61	59	66	96	51
	HE (%)	31	35	33	0	27

9
10

1 Table 2. Annual precipitation (P, mm), runoff (R, mm), runoff coefficient (Kr, %),
2 suspended sediment load (SSL, t) with its standard deviation (\pm SD) and
3 suspended sediment yield (SSY, t·km⁻²) with its standard deviation (\pm SD) for
4 the Deba, Urola, Oria, Urumea and Oiartzun catchments between 2006 and
5 2013. In the last column, the calculated mean annual precipitation, runoff and
6 suspended sediment load and yield for the studied period (2006-2013) are
7 listed. P, R, Kr, SSL and SSY data for Gipuzkoa are also included. The
8 precipitation presented in this table was estimated for the entire catchment,
9 taking into account all of the rain gauges in the study area.

	2006-2007	2007-2008	2008-2009	2009-2010	2010-2011	2011-2012	2012-2013	2006-2013	
Deba	P (mm)	1501	1217	1693	1281	1207	1251	1444	
	R (mm)	705	640	995	710	566	636	791	
	Kr (%)	47	53	59	55	47	51	55	
	SSL (t), \pm SD	49800 \pm 912	75000 \pm 6267	40300 \pm 380	48900 \pm 767	48900 \pm 912	44500 \pm 25175	66000 \pm 332	53500 \pm 9824
	SSY (t/km ²) \pm SD	107 \pm 1.96	161 \pm 13.5	87 \pm 0.82	111 \pm 0.64	107 \pm 1.96	86 \pm 54.23	142 \pm 0.71	115 \pm 21.16
Urola	P (mm)	1526	1307	1768	1367	1312	1440	1559	
	R (mm)	709	649	1119	739	678	867	897	
	Kr (%)	46	50	63	54	52	60	57	
	SSL (t), \pm SD	80600 \pm 90	17200 \pm 52	21300 \pm 69	16700 \pm 73	12700 \pm 49	24000 \pm 122	49200 \pm 107	31700 \pm 84
	SSY (t/km ²) \pm SD	299 \pm 0.33	64 \pm 0.19	79 \pm 0.26	62 \pm 0.27	47 \pm 0.18	89 \pm 0.45	182 \pm 0.39	117 \pm 0.31
Oria	P (mm)	1657	1348	1764	1381	1427	1406	1607	
	R (mm)	833	754	1139	793	753	877	1602	
	Kr (%)	50	56	65	57	53	62	71	
	SSL (t), \pm SD	38600 \pm 2260	29400 \pm 222	197600 \pm 70328	94800 \pm 2215	52900 \pm 312	644600 \pm 212585	150200 \pm 637	172600 \pm 84641
	SSY (t/km ²) \pm SD	48 \pm 2.84	37 \pm 0.28	248 \pm 88	119 \pm 2.78	66 \pm 0.39	809 \pm 266.9	189 \pm 0.8	217 \pm 106
Urumea	P (mm)	2405	1844	2344	1805	2134	1895	2203	
	R (mm)	1224	1232	1554	1058	1172	1267	2030	
	Kr (%)	51	67	66	59	55	67	68	
	SSL (t), \pm SD	7100 \pm 55	3200 \pm 52	10900 \pm 96	5300 \pm 50	9600 \pm 74	15600 \pm 193	19000 \pm 134	10100 \pm 106
	SSY (t/km ²) \pm SD	33 \pm 0.25	15 \pm 0.24	50 \pm 0.44	24 \pm 0.23	44 \pm 0.34	71 \pm 0.88	87 \pm 0.61	46 \pm 0.48
Oiartzun	P (mm)	2037	1784	2210	1745	2059	1818	2054	
	R (mm)	1297	1139	1578	1169	1255	1379	2230	
	Kr (%)	64	64	71	67	61	76	82	
	SSL (t), \pm SD	1600 \pm 11	1200 \pm 9	5200 \pm 14	5200 \pm 24	5400 \pm 26	4700 \pm 23	7500 \pm 23	4400 \pm 20
	SSY (t/km ²) \pm SD	28 \pm 0.2	21 \pm 0.15	92 \pm 0.25	91 \pm 0.42	96 \pm 0.46	84 \pm 0.4	132 \pm 0.4	78 \pm 0.35
Gipuzkoa	P (mm)	1700	1382	1830	1416	1459	1443	2278	
	R (mm)	843	779	1163	807	760	876	1579	
	Kr (%)	50	56	64	57	52	61	69	
	SSL (t), \pm SD	177800 \pm 1091	126000 \pm 2804	275400 \pm 31452	170900 \pm 1049	130500 \pm 433	733500 \pm 95735	291800 \pm 330	272200 \pm 38107
	SSY (t/km ²) \pm SD	98 \pm 0.6	70 \pm 1.55	154 \pm 17	95 \pm 0.58	72 \pm 0.24	406 \pm 53	162 \pm 0.18	151 \pm 21.1

1 Table 3. Erosion estimates made using the RUSLE equation (Basque
2 Government, 2005), mean SSY (this paper) and sediment delivery ratio (SDR)
3 calculated from those data. The area (A, km²) of the studied catchments is also
4 included in the table.

	Erosion RUSLE (t/km ²)	SSY t/km ²	SDR %	A km ²
DEBA	415	115	28	464.25
UROLA	320	117	37	269.77
ORIA	370	217	59	796.5
URUMEA	240	46	19	218.42
OIARTZUN	490	78	16	56.6

5
6
7
8

1 Table 4. Temporal variability indices for the runoff (mm) and SS load (t) for the
 2 five catchments studied. $T_{w50\%}$ and $T_{w80\%}$ are the percentages of time required
 3 to deliver 50% and 80% of the annual water volume, respectively. $T_{s50\%}$ and
 4 $T_{s80\%}$ are the percentages of time required to deliver 50% and 80% of the
 5 annual SS load, respectively.

	Runoff		SS load	
	$T_{w50\%}$	$T_{w80\%}$	$T_{s50\%}$	$T_{s80\%}$
Deba	10.2	34.5	0.69	3.18
Urola	12.4	40.3	1.02	5.72
Oria	11.2	37.7	0.57	2.77
Urumea	16.3	45.6	0.29	2.44
Oiartzun	15.7	45.8	0.68	7.84

6

7

1 Table 5. Spearman correlation matrix between the variables presented in Table

2 1. In brackets significance of Spearman's r.

	P	R	Kr	A	Elev _{max}	S	LW	LF	LP	LU	Z	LE	ME	HE	SSL	SSY
P	1.00															
R	.90 (0.04)	1.00														
Kr	.90 (0.04)	1.00	1.00													
A	-.60 (0.28)	-.70 (0.19)	-.70 (0.19)	1.00												
Elev _{max}	-.30 (0.62)	-.50 (0.39)	-.50 (0.39)	-.10 (0.87)	1.00											
S	.21 (0.74)	-.21 (0.74)	-.21 (0.74)	.05 (0.93)	.41 (0.49)	1.00										
LW	-.70 (0.19)	-.60 (0.28)	-.60 (0.28)	-.10 (0.87)	.70 (0.19)	-.10 (0.87)	1.00									
LF	1.00	.90 (0.04)	.90 (0.04)	-.60 (0.28)	-.30 (0.62)	.21 (0.74)	-.70 (0.19)	1.00								
LP	.10 (0.87)	.20 (0.75)	.20 (0.75)	.30 (0.62)	-.90 (0.04)	-.10 (0.87)	-.60 (0.28)	.10 (0.87)	1.00							
LU	-.30 (0.62)	.10 (0.87)	.10 (0.87)	-.40 (0.50)	-.20 (0.75)	-.67 (0.22)	.50 (0.39)	-.30 (0.62)	.10 (0.87)	1.00						
Z	-.97 (0.00)	-.97 (0.00)	-.97 (0.00)	.67 (0.22)	.41 (0.49)	.00 (1)	.67 (0.22)	-.97 (0.00)	-.15 (0.80)	.10 (0.87)	1.00					
LE	-.20 (0.75)	.10 (0.87)	.10 (0.87)	-.60 (0.28)	.30 (0.62)	-.56 (0.32)	.70 (0.19)	-.20 (0.75)	.80 (0.39)	.05 (0.10)	.93 (0.93)	1.00				
ME	.30 (0.62)	-.10 (0.87)	-.10 (0.87)	.40 (0.50)	.20 (0.75)	.67 (0.22)	-.50 (0.39)	.30 (0.62)	-.10 (0.87)	-1.00 (0.87)	-.10 (0.87)	-.80 (0.10)	1.00			
HE	-.70 (0.19)	-.60 (0.28)	-.60 (0.28)	.60 (0.28)	-.30 (0.62)	-.05 (0.93)	.20 (0.75)	-.70 (0.19)	.60 (0.28)	.30 (0.62)	.67 (0.22)	-.20 (0.75)	-.30 (0.62)	1.00		
SSL	-.60 (0.28)	-.70 (0.19)	-.70 (0.19)	1.00	-.10 (0.87)	.05 (0.93)	-.10 (0.87)	-.60 (0.28)	.30 (0.62)	-.40 (0.50)	.67 (0.22)	-.60 (0.28)	.40 (0.50)	.60 (0.28)	1.00	
SSY	-.60 (0.28)	-.50 (0.39)	-.50 (0.39)	.80 (0.10)	-.50 (0.39)	-.21 (0.74)	-.10 (0.87)	-.60 (0.28)	.70 (0.19)	.10 (0.87)	.56 (0.32)	-.40 (0.50)	-.10 (0.87)	.90 (0.04)	.80 (0.10)	1.00

3

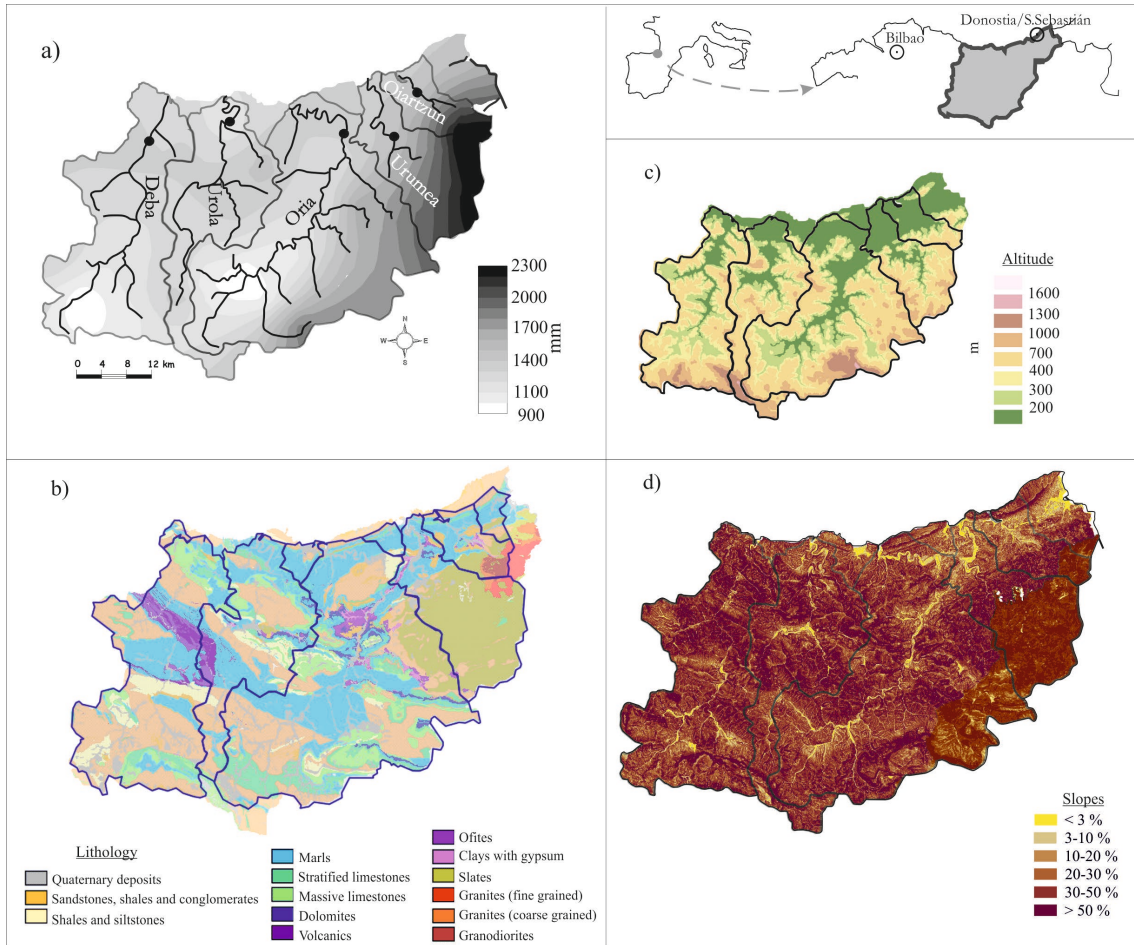
4

- 1 Table 6. Loads of each variable considered in the PCs (principal components)
- 2 obtained from the principal component analysis.

	P	R	Kr	A	SSL	SSY	Elev _{max}	S	LW	LF	LP	LU	Z	LE	ME	HE
PC1	-0.89	-0.96	-0.98	0.78	0.53	0.81	0.11	-0.07	0.74	-0.70	-0.13	0.14	0.93	-0.43	0.01	0.34
PC2	-0.42	-0.24	0.18	-0.02	0.46	-0.29	-0.22	-0.93	0.33	-0.70	0.29	0.99	0.30	0.55	-1.00	0.90
PC3	-0.16	-0.09	0.06	0.62	0.71	0.49	-0.96	-0.24	-0.53	0.05	0.93	0.03	-0.18	-0.72	-0.02	0.28

3
4

1

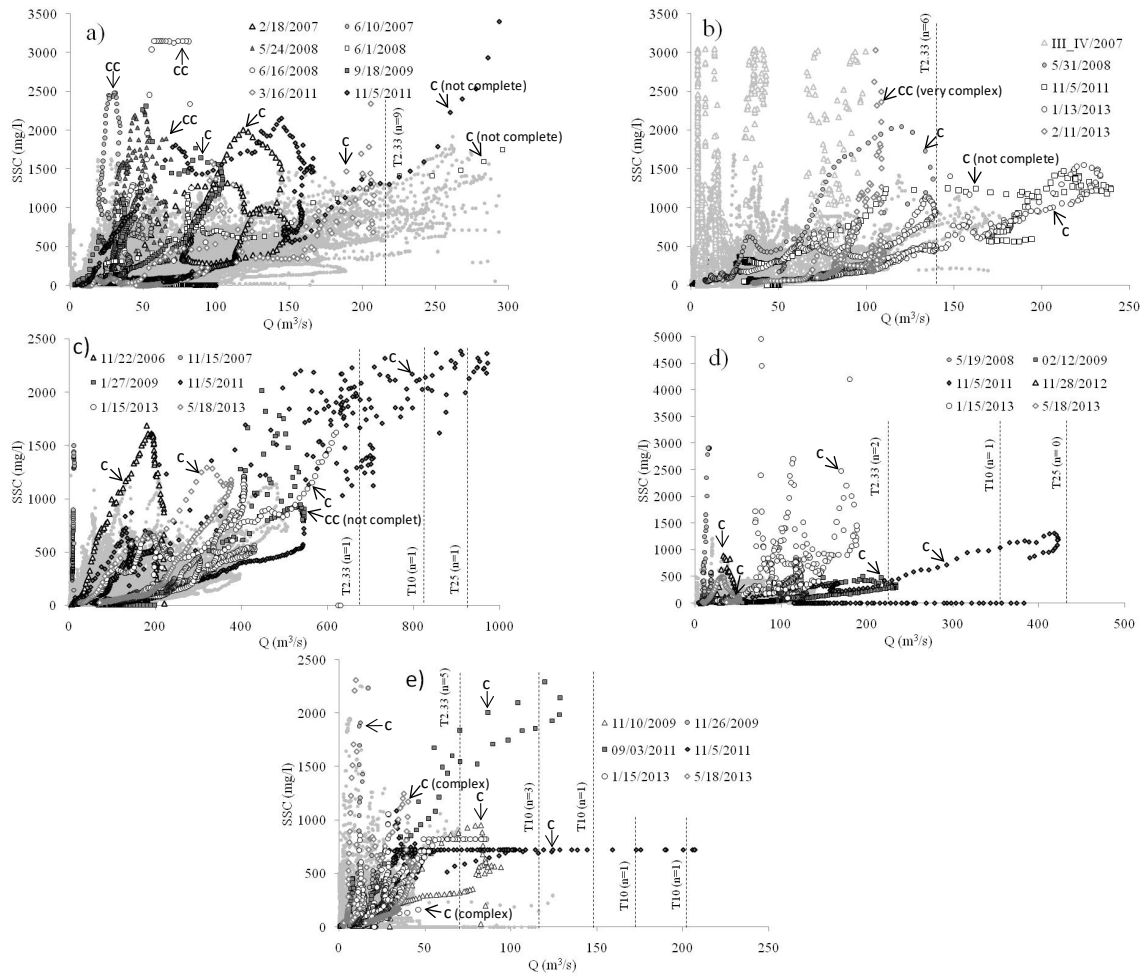


2

3 Fig. 1: Location and environmental characteristics of the studied area. a)
4 Studied catchments and the locations of the gauging stations (black circles).
5 The figure also shows the average annual precipitation map, b) lithology, c)
6 altitude and d) slopes.

7

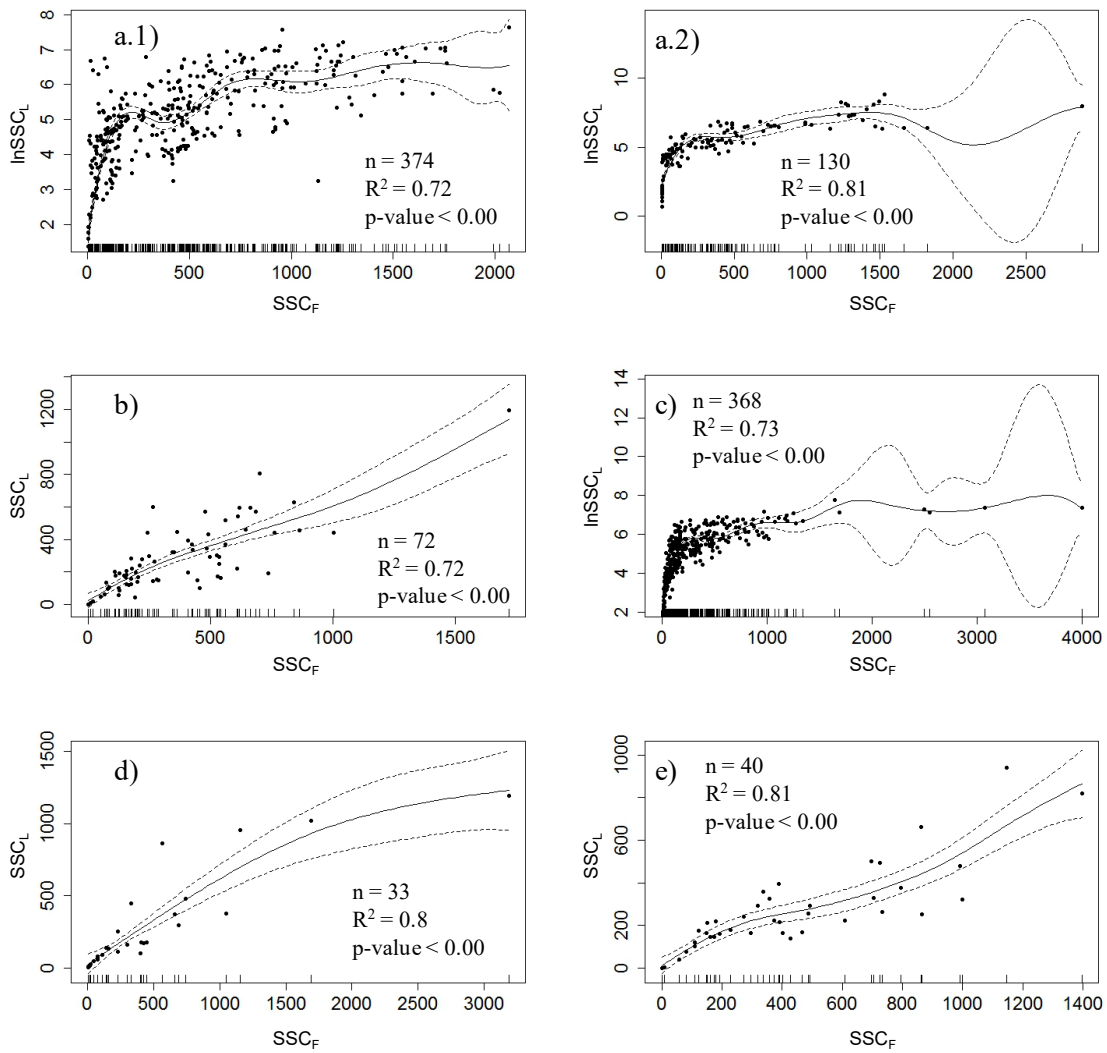
8



1

2 Fig. 2: SSC vs. Q relationship for each catchment for the period 2006-2013. The
 3 major events in each catchment are indicated by different symbols. c: Clockwise
 4 hysteresis; cc: counter-clockwise hysteresis. a) Deba; b) Urola; c) Oria; d)
 5 Urumea; e) Oiartzun. Return periods (T2.33, T10, T25) for discharge along with
 6 the number of events that exceed each of those periods were indicated for each
 7 catchment.

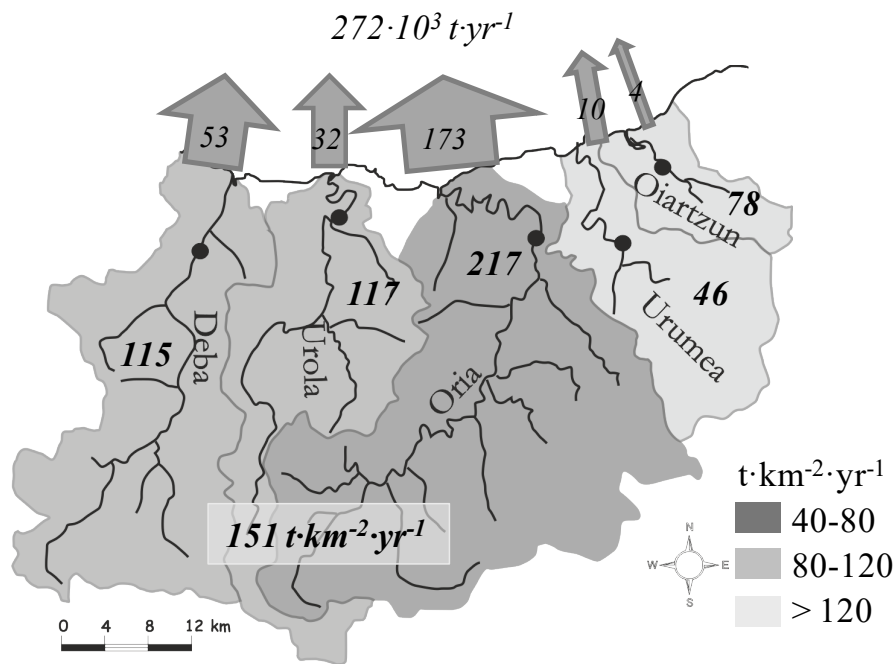
8



1

2 Fig. 3: GAM models for field SSC_F ($mg \cdot l^{-1}$, optical) and laboratory SSC_L ($mg \cdot l^{-1}$)
 3 regressions with their 95% confidence intervals for a.1) and a.2) Deba, b) Urola,
 4 c) Oria, d) Urumea and e) Oiartzun Rivers. Data from events registered from
 5 October 2006 to September 2013 are included in all of the regressions. In Deba
 6 two regressions are included a.1) for most of the 2006-2013 period a.2) for the
 7 period between November 2011 and February 2012. See explanation in the
 8 text.

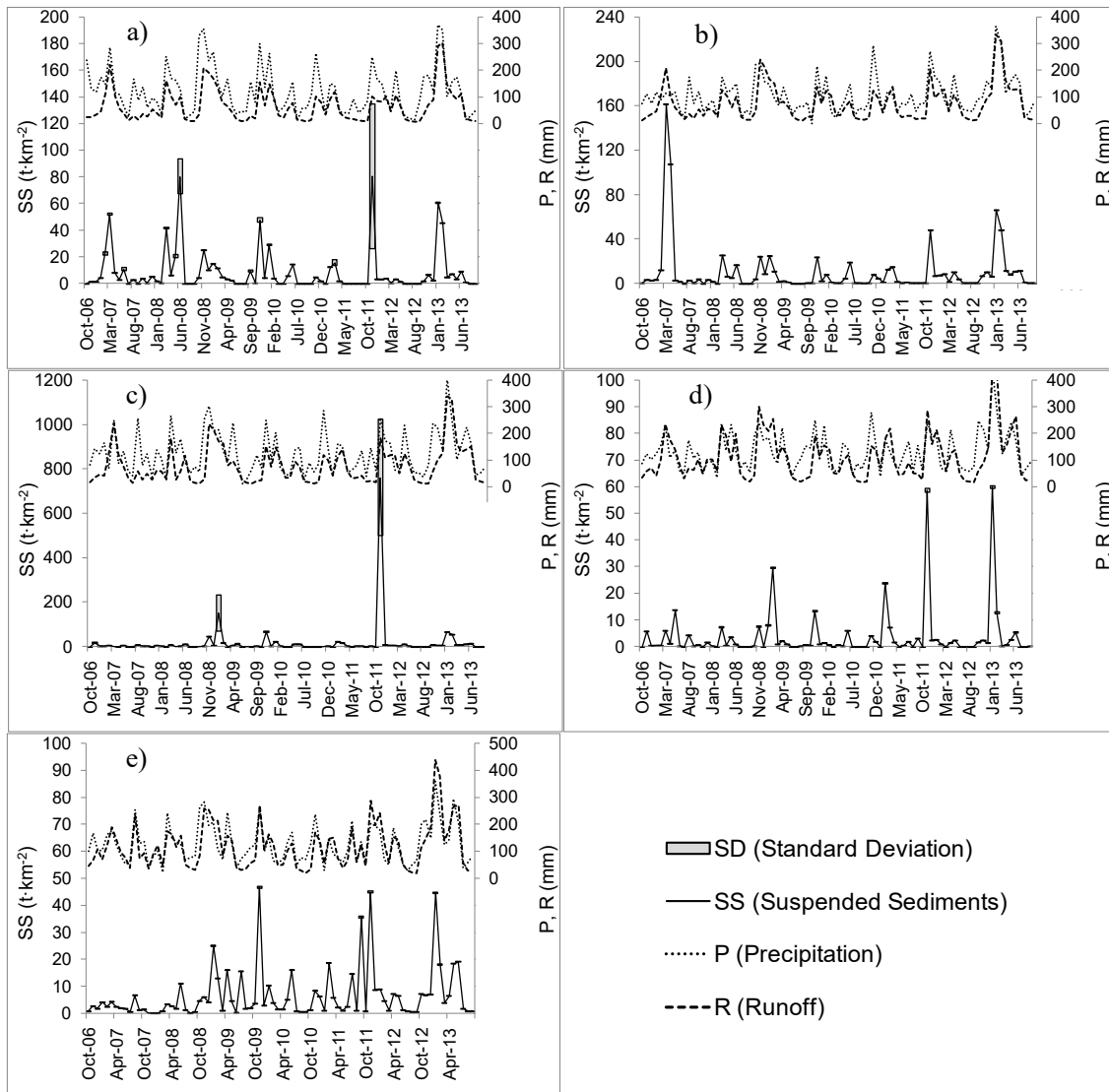
9



1

2 Fig. 4: Annual discharge of SS from the studied catchments. The widths of the
 3 arrows correspond to the relative sediment loads. The colours of the
 4 catchments refer to the relative sediment yield. The numbers inside the arrows
 5 refer to the average annual sediment delivery in thousands of tonnes per year.
 6 The numbers inside each catchment refer to the suspended sediment yield in
 7 tonnes per square kilometre and year.

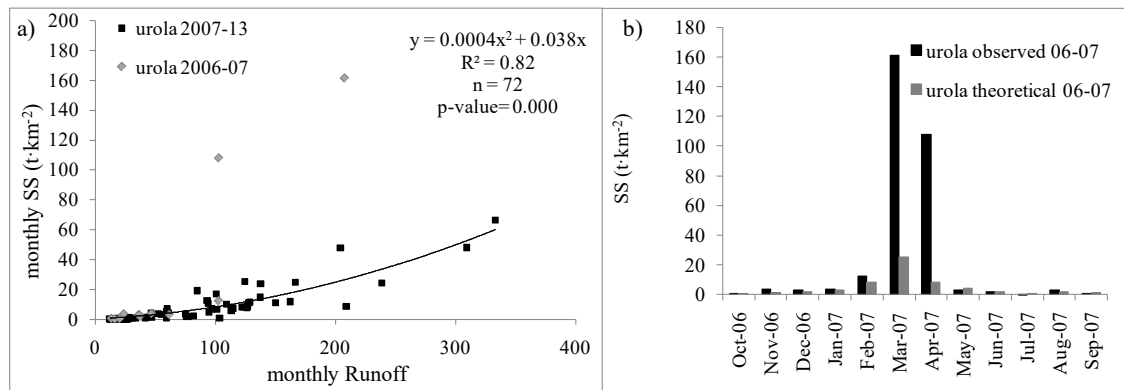
8



1

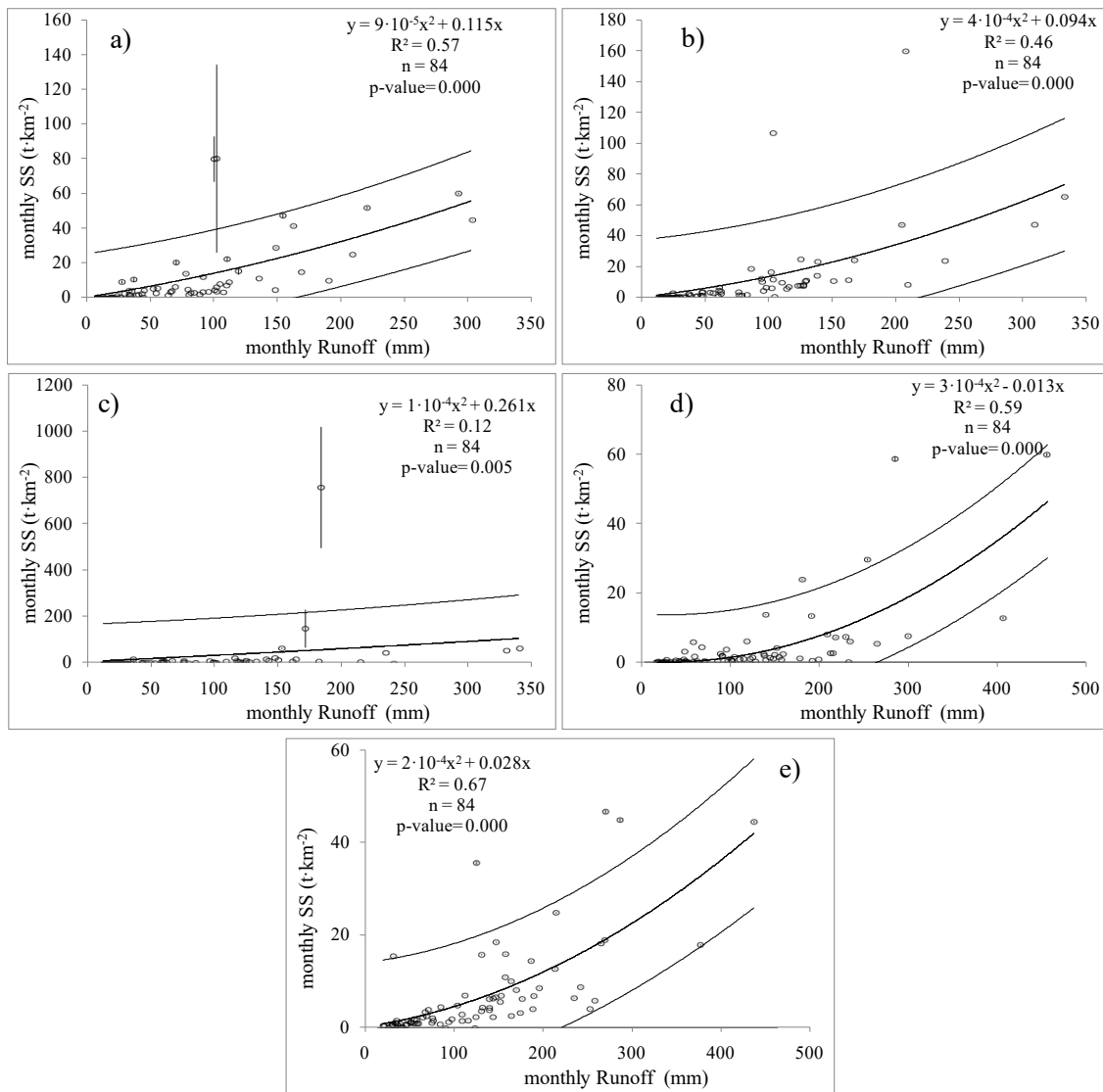
2 Fig. 5: Monthly precipitation (P, mm), runoff (R, mm) and specific SS load with
 3 its standard deviation (t·km⁻²) for the a) Deba, b) Urola, c) Oria, d) Urumea and
 4 e) Oiartzun catchments for the period 2006-2013.

5



1
2
3
4
5
6
7
8
9
10

Fig. 6: a) Monthly mean SS (t·km⁻²) vs. monthly runoff (mm) for the Urola catchment over the periods 2006-2007 and 2007-2013. The regression for the period 2007-2013, with the number of data involved (n), the determination coefficient (R²) and the significance level of the regression (p-value) also included. b) Observed and theoretical SS delivery (t·km⁻²) from the Urola catchment over the period 2006-2007. The theoretical SS delivery was calculated using the monthly relationship between runoff (mm) and SS delivery (t·km⁻²) from October 2007 to September 2013.

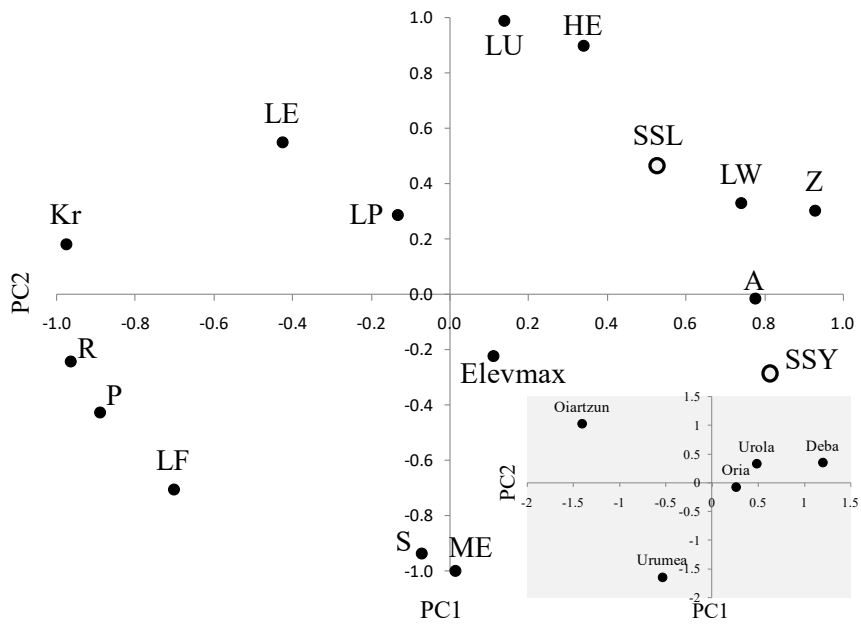


1

2 Fig. 7: Regressions and 95% confidence intervals between the monthly specific
 3 mean SS loads (t·km⁻²) and monthly runoff (mm) for the a) Deba, b) Urola, c)
 4 Oria, d) Urumea and e) Oiartzun catchments for the period between 2006 and
 5 2013. Standard deviation of the monthly SS load is represented by a vertical
 6 line. The regression equation, number of observations (n), determination
 7 coefficient (R²) and significance level (p-value) are also shown.

8

9



1
 2 Fig. 8: Distribution of the analysed variables and the catchments (shaded area
 3 in the left bottom) in the PC1 vs. PC2 factorial plane obtained by principal
 4 component analysis.

5
 6
 7
 8
 9
 10
 11
 12
 13
 14
 15